

THINGS YOU SHOULD KNOW

Customer Information Net Metering

INTRODUCTION

In 2012, the Government of the Northwest Territories (GNWT) released its Solar Energy Strategy which provides the framework for encouraging greater use of solar and less reliance on diesel fuel in NWT communities.

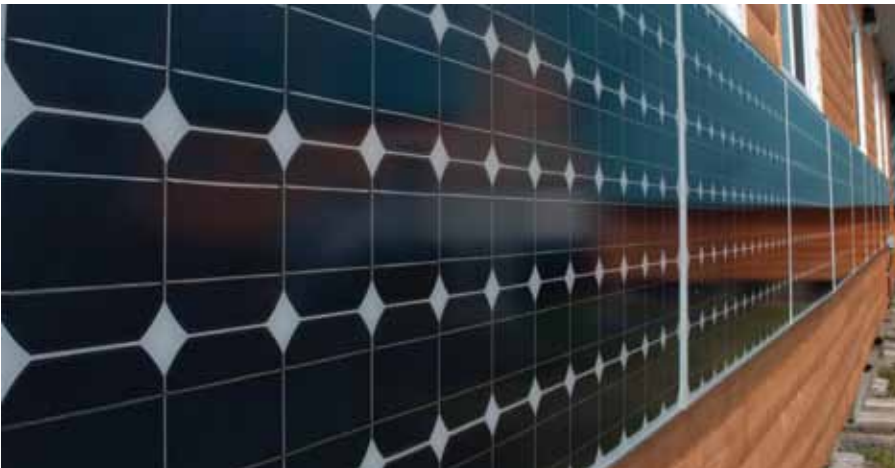
One tool that can be used to support meeting the solar energy targets is through Net Metering.

As of January 31, 2014 the Public Utilities Board (PUB) approved the implementation of Net Metering by the utilities in the Northwest Territories. The program is open to electricity customers who own small, commercially-proven, renewable energy generators.

Net Metering allows customers to accumulate energy credits monthly for any excess electricity they produce to be used against those months when their usage exceeds their production. If in the event there are any credits left at the end of the Net Metering cycle on March 31, they will be reset to zero. See Table 1.

Customers in Net Metering receive a credit in kilowatt hours equal to the excess energy, calculated at the full retail rate.

Improving your home business with renewable energy technologies can be an expensive proposition, but funding is available to help you purchase your renewable energy technology system and through Net Metering your utility is paying for metering costs.



Net Metering

If you are a residential or business customer of the utilities', the Arctic Energy Alliance will be your contact or if you have a community-based project, the Department of Energy and Natural Resources (ENR) will assist you as outlined later in this brochure.

We've developed a stream-lined Application, Interconnection Guideline and a Schematic to help you with the process.

If you're interested you can find these materials on our website.

NUL and NTPC will provide the metering requirements for each selected location.

Eligibility

- NTPC and NUL customers (eligibility for GNWT and Federal Government accounts have been approved but the implementation has been delayed until the Utilities' next Phase II proceeding). Check our website for updates.
- Renewable energy installations with a rated capacity generally not exceeding 15 kW.
- NTPC customers are exempt from standby charges for intermittent generation. Customers with small, commercially
- proven wind generators, mini-hydro, solar, or other renewable energy technologies looking to displace their own energy requirements with self-generation.

Please note that the PUB will review Net Metering compensation rates as part of its regular review of rates and rate structures. As such, Net Metering compensation rates are subject to change from time to time.

Application Process

The application process is illustrated in the attached diagram. Interested customers should complete and submit the application form which is located on your local utility's web site.

Compensation

Net Metering participants receive a credit in kilowatt hours equal to the excess energy, calculated at the full retail rate. Customers can use excess generation up until March 31 of each year and use the credit in the winter months when they are most needed. The excess energy credits for each Net Metering customer will be reset to zero at the end of each annual netting period.

Customers in Net Metering receive a credit in kilowatt hours equal to the excess energy, calculated at the full retail rate.



Net Metering

"The investment to hook your technology into our system is as low as its likely going to get."



SOUTHWEST WIND POWER

Participant Costs

Customers participating in Net Metering are responsible for all costs associated with purchasing and installing the renewable energy system. Participants are also responsible for any costs associated with permits, inspection or other requirements to make the system compliant with relevant codes and standards.

Note participants will continue to be billed the basic monthly charge.

Utility Costs

Net Metering provides the participating customer with a meter to track how much renewable energy is supplied to the distribution system at the cost of the utility.

Technical Requirements

Renewable energy installations must meet the requirements of the NTPC / NUL *Distributed Resource Technical Interconnection Guideline*. This document can be downloaded from the NTPC / NUL website.

Only commercially proven renewable energy technologies will be considered.

All equipment in the project must be Canadian Standards Association (CSA) or Underwriter's Laboratory of Canada (ULC) approved and the installation must meet all requirements of the current Canadian Electrical Code.

The first step of your project is to submit your Net Metering Application to your utility for approval:

Northwest Territories Power Corporation

Erin Ladouceur, Manager, Billings
PO Box 2250
(Jackfish - Junction Hwy 3 & 4)
Yellowknife, NT X1A 2P7
Telephone: (867) 669-3307
Fax: 867-669-3316
email: eladouceur@ntpc.com
Or

Northland Utilities (Yellowknife) Limited

General Manager
481 Range Lake Road
Yellowknife, NT X1A 3R9
Telephone: (867) 873-4865
Fax: (867) 920-2099
email: northlandutilitiesyk@atco.ca

Once your utility approves your application, you will require an electrical permit to do the work. Electrical inspections in the Northwest Territories must be approved by a certified electrical inspector. Inspections are available through the regional Public Works and Services (PWS) office.

Public Works and Services Electrical / Mechanical Safety Laing Building, 1st Floor Box 1320
Yellowknife, NT X1A 2L9 Phone: (867) 873-7957 Fax: (867) 873-0117
www.pws.gov.nt.ca
Hay River: (867) 874-7008 Inuvik: (867) 777-4351



Net Metering

Table 1

Sample Account – How Net Metering Works

Month	kWh Generated	kWh Used	Excess kWh Generated	Net Accumulated kWh	kWh Billed
April	375	800	0	0	425
May	450	750	0	0	300
June	525	700	0	0	175
July	600	500	100	100	0
August	600	500	100	200	0
September	525	600	0	125	0
October	500	600	0	25	25
November	350	750	0	0	375
December	300	800	0	0	500
January	300	850	0	0	550
February	400	800	0	0	400
March	500	450	50	50 ¹	0
April	550	600	0	50	50

¹ Will be reset to zero on March 31.

Please note: Customer will continue to be billed the basic monthly charge.

That the PUB will review Net Metering compensation rates as part of its regular review of rates and rate structures. As such, Net Metering compensation rates are subject to change from time to time.

Available Funding

Funding is available to support the purchase of your renewable energy system.

For **residential** and **businesses** installations, contact:

**Arctic Energy Alliance
Yellowknife Office**

101-5102 51st Street
Yellowknife NT X1A 1S7
Phone: (867) 920-3333
Toll Free: 1-877-755-5855
Fax: (867) 873-0303

For **community** projects contact:

**Department of Environment and
Natural Resources**

Environment Division
Wade Carpenter
Alternative Energy Specialist
PO Box 1320
Yellowknife, NT X1A 2L9
Telephone: (867) 873-7654
Fax: (867) 873-0221

Regional offices are also located in the Tlicho, Beaufort Delta, Dehcho, and Sahtu.

For details refer to the **Arctic Energy Alliance's website at:** www.aea.ca

