



# Central Iowa COVID19 Update

---

Wednesday, September 22, 2021



Statistical Consulting

Dr. Meg Schaeffer





## Quick Stats<sup>1</sup>

	Polk County	Iowa
Percent of population with 1 dose	62.7%	53.4%
Percent of population with 2 doses	57.4%	57.6%
7d Lab Test Positivity	11%	9.6%
Total cases per 100,000 the last 7d	424	386
CDC County Transmission Level*	High	
Average daily cases the last 7d	297	1739

\*[VaccineInformation | Iowa COVID-19 Information](#)

All data are sourced from <https://coronavirus.iowa.gov/pages/case-counts> with previous days refreshed daily. When recent data are unavailable, data from <https://github.com/nytimes/covid-19-data> may be used. Population of Polk County used is 490,161.

Population of Iowa used is 3.155 million. Averages and percent positivity are subject to change with retrospectively refreshed data.

## Critical Points, Media, and Research

- Iowa test data show significant delays in reporting. Case counts are still not declining, though are slowing. School-age children comprise ~30% of new cases.
- Notes on booster dosing decisions – The FDA authorized booster doses for those over 65 or in high-risk occupations for Pfizer recipients only. Tomorrow (9/23) the Advisory Committee on Immunization Practices (ACIP) will assess recommendations which may align with FDA approval or the committee may wait until booster dosing for Moderna is also available.
  - Data used by FDA and ACIP show a third dose ramps up antibody levels, but cellular immunity from past vaccine doses is retained and protects well against serious illness and death. It is not known whether boosting results in significant reductions in virus transmission.
- COVID vaccination and spontaneous abortion (miscarriage)
  - Among 105,446 pregnancies, COVID-19 vaccination within 28 days of event did not increase risk of spontaneous abortion compared with ongoing pregnancies (OR 1.02; 95% CI 0.96-1.08; Figure). [Spontaneous Abortion Following COVID-19 Vaccination During Pregnancy](#)
  - [Receipt of mRNA Covid-19 Vaccines and Risk of Spontaneous Abortion | NEJM](#)
- Among 21,722 (half vaccinated, half matched controls) pregnant women in Israel, Pfizer vaccine effectiveness was 96% (95% CI 89%-100%) for all infections up to 56 days after 2<sup>nd</sup> dose, 97% (95% CI 91%-100%) for symptomatic infections and 89% (95% CI 43%-100%) for hospitalization. [Effectiveness of the BNT162b2 mRNA COVID-19 vaccine in pregnancy | Nature Medicine](#)
- [Longitudinal Trends in Body Mass Index Before and During the COVID-19 Pandemic Among Persons Aged 2–19 Years — United States, 2018–2020 | MMWR \(cdc.gov\)](#)
- Vaccination protection against hospitalizations
  - The incidence of SARS-CoV-2 infection, hospitalization, and death is higher in unvaccinated than vaccinated persons, and the incidence rate ratios are related to vaccine effectiveness. [Monitoring Incidence of COVID-19 Cases, Hospitalizations, and Deaths, by Vaccination Status — 13 U.S. Jurisdictions, April 4–July 17, 2021 | MMWR \(cdc.gov\)](#)
  - [Interim Estimates of COVID-19 Vaccine Effectiveness Against COVID-19–Associated Emergency Department or Urgent Care Clinic Encounters and Hospitalizations Among Adults During SARS-CoV-2 B.1.617.2 \(Delta\) Variant Predominance](#)
  - [Effectiveness of COVID-19 mRNA Vaccines Against COVID-19–Associated Hospitalization — Five Veterans Affairs Medical Centers, United States, February 1–August 6, 2021 | MMWR](#)
  - [New COVID-19 Cases and Hospitalizations Among Adults, by Vaccination Status — New York, May 3–July 25, 2021 | MMWR](#)
- [Iowa seeks more COVID-19 rental assistance as evictions soar](#)
- [Hospitalizations with COVID-19 in Iowa at calendar year peak](#)
- [Iowa COVID hospitalizations in hit new high for 2021](#)



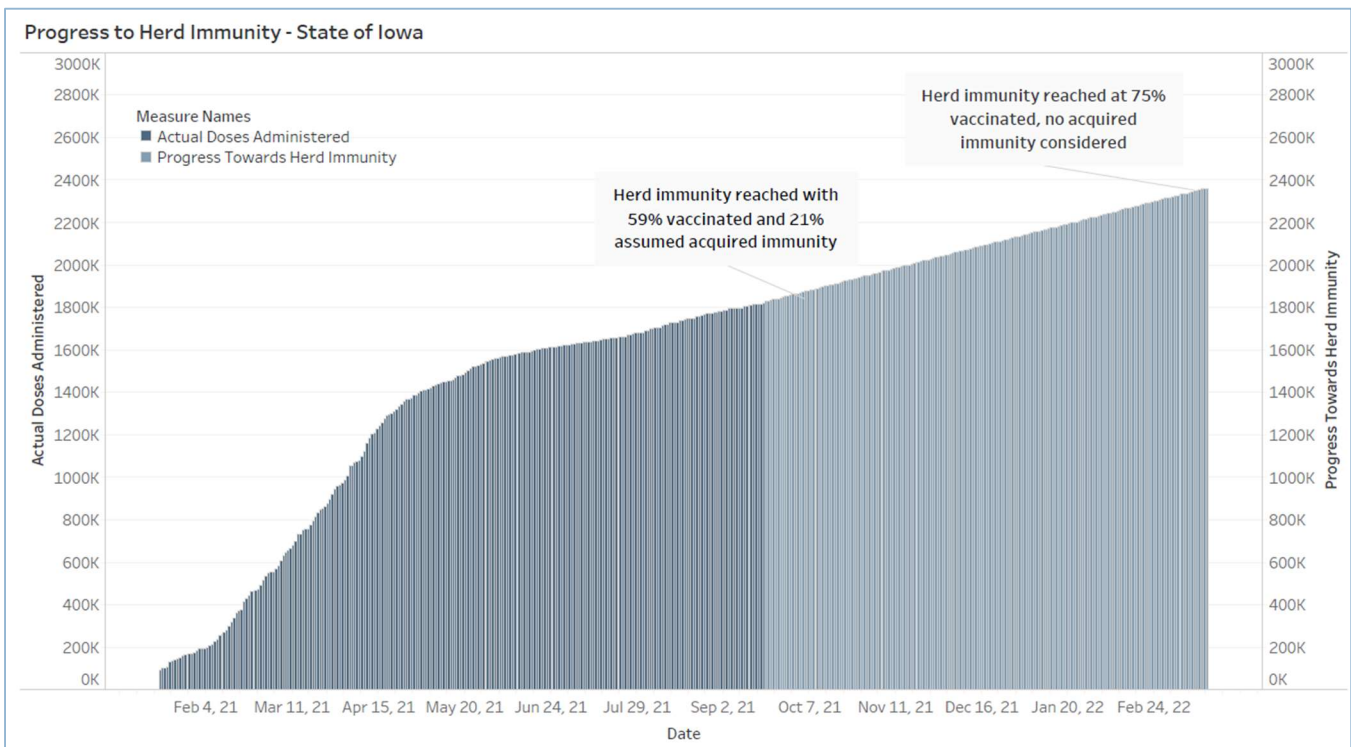
## Vaccine Progress

Polk Co Vaccination Rates CDC Covid Data Tracker Data (*)	At Least One Dose	Difference prev week	Fully Vaccinated	Difference prev week
Total	307,571	2,605	281,281	3,364
% of Total Population	62.7%	0.5%	57.4%	0.7%
Population ≥ 12 Years of Age	307,557	2,604	281,280	3,364
% of Population ≥ 12 Years of Age	75.2%	0.6%	68.8%	0.8%
Population ≥ 18 Years of Age	283,267	2,289	260,122	2,741
% of Population ≥ 18 Years of Age	76.7%	0.6%	70.5%	0.8%
Population ≥ 65 Years of Age	63,044	195	59,955	214
% of Population ≥ 65 Years of Age	95.4%	0.3%	90.7%	0.3%

(\*) CDC COVID Data Tracker Data: CDC data includes vaccine administration data from all sources, including IRIS\*, other state immunization registries, and federal entities (Bureau of Prisons, Veterans Health Administration, Department of Defense, and Federal Long-Term Care program). These doses may not have been reported to IRIS.

Link to Zip Code-Level Vaccination

Rates - <https://arcg.is/1nTry4>





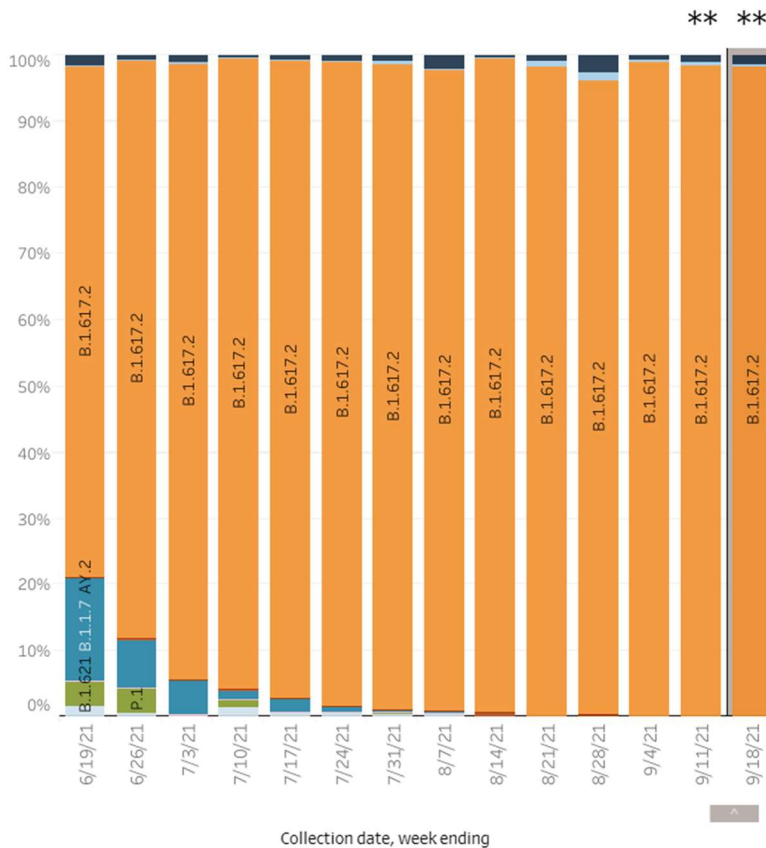
## School Data

Rate of Student/Staff Cases Per 1,000		
Week Ending	15-Sep	22-Sep
DMPs	0.1	0.7
Ankeny	0.9	0.9
Waukee	0.4	0.6
WDM	0.4	0.5
Johnston	NA	NA
SE Polk	1.6	1.4
Urbandale	0.4	0.5
Total	0.42	0.70

## Variant Prevalence

HHS Region 7: 6/13/2021 – 9/18/2021

HHS Region 7: 9/12/2021 – 9/18/2021 NOWCAST



Region 7 - Iowa, Kansas, Missouri, and Nebraska

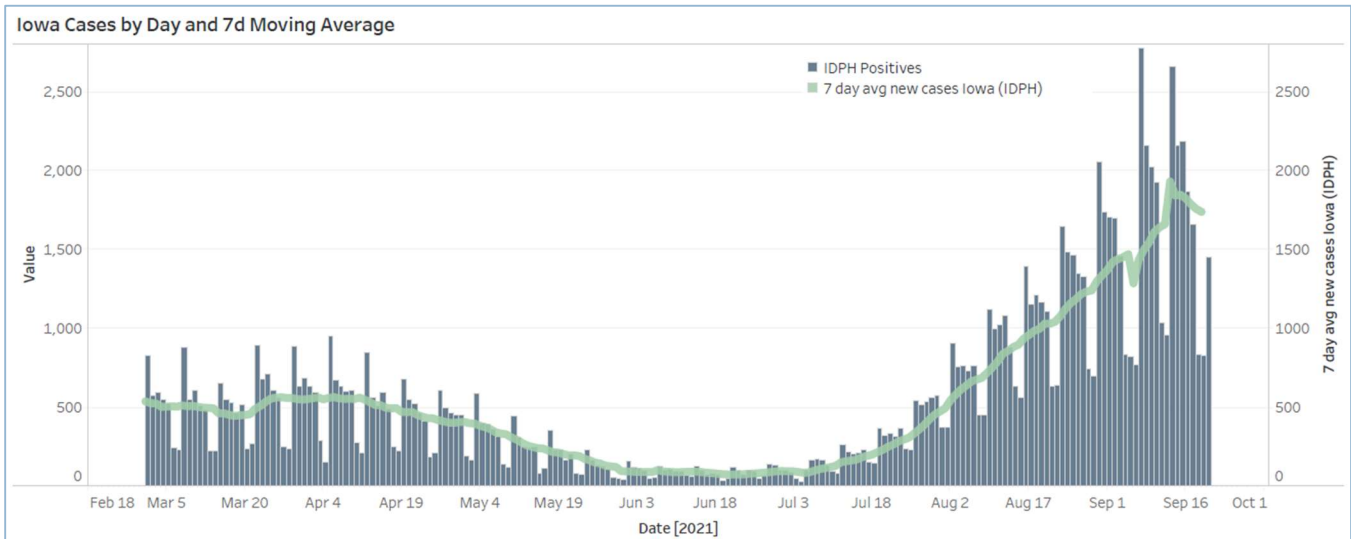
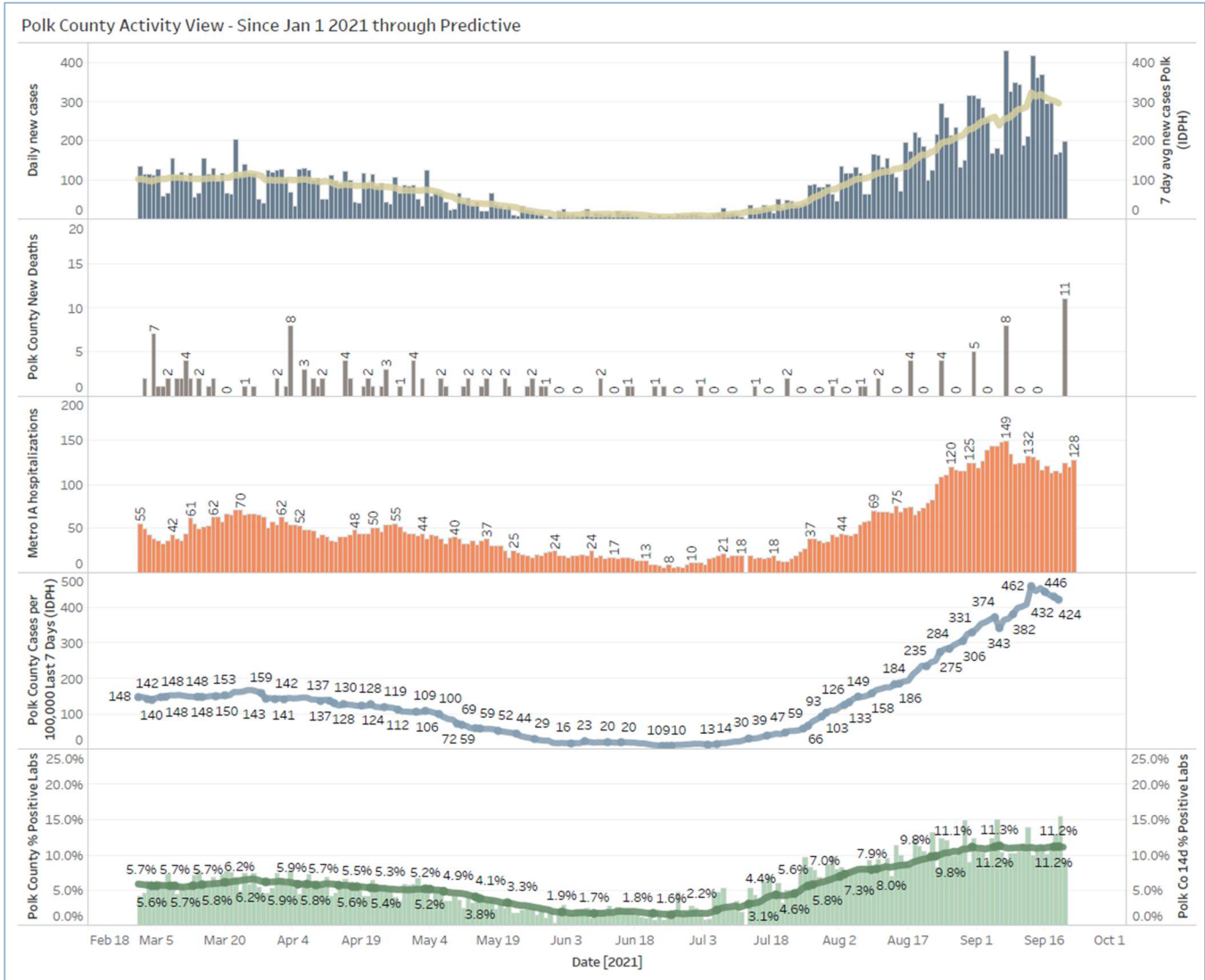
WHO label	Lineage #	US Class	%Total	95%PI
Alpha	B.1.1.7	VBM	0.0%	0.0-3.1%
Beta	B.1.351	VBM	0.0%	0.0-3.1%
Gamma	P.1	VBM	0.0%	0.0-3.1%
Delta	B.1.617.2	VOC	98.2%	93.8-100.0%
	AY.1	VOC	0.0%	0.0-3.1%
	AY.2	VOC	0.0%	0.0-3.1%
Iota	B.1.526	VBM	0.0%	0.0-3.1%
Kappa	B.1.617.1	VBM	0.0%	0.0-3.1%
Mu	B.1.621	VBM	0.0%	0.0-3.1%
N/A	B.1.1.194		0.4%	0.0-3.1%
Other	Other*		1.3%	0.0-6.3%

\* Enumerated lineages are VOI/VOC/VBM or are circulating >1% in at least one HHS region during at least one two week period. "Other" represents lineages which are circulating <1% nationally during all weeks displayed.

\*\* These data include Nowcast estimates, which are modeled projections that may differ from weighted estimates generated at later dates

# Sublineages of P.1, B.1.351 and B.1.621 are aggregated with the parent lineage and included in parent lineage's proportion. Q.1-Q.8 are aggregated with B.1.1.7. AY.3-AY.25 and their sublineages are aggregated with B.1.617.2.

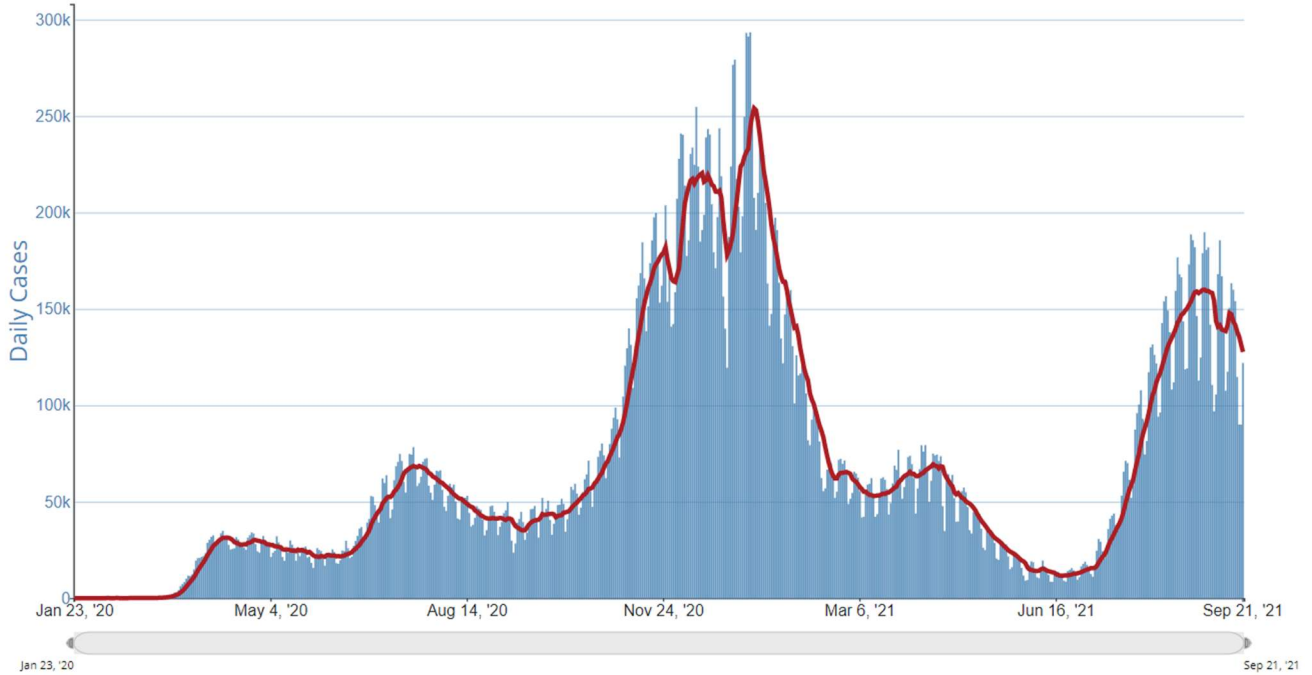
# Central Iowa COVID19 Update



# Central Iowa COVID19 Update



Daily Trends in Number of COVID-19 Cases in The United States Reported to CDC



	CASES DAILY AVG.	PER 100,000	14-DAY CHANGE	HOSPITALIZED DAILY AVG.	PER 100,000	14-DAY CHANGE	DEATHS DAILY AVG.	PER 100,000	FULLY VACCINATED
United States	130,592	39	-12%	91,189	27	-10%	2,075.0	0.63	55%
Alaska ›	877	120	+44%	213	29	+16%	1.9	0.25	50%
West Virginia ›	1,789	100	+19%	988	55	+25%	24.4	1.36	40%
Guam	155	92	+1%	—	—	—	1.6	0.93	65%
Wyoming ›	528	91	+12%	201	35	-6%	5.3	0.91	41%
Kentucky ›	3,872	87	-5%	2,463	55	Flat	39.1	0.88	51%
Montana ›	921	86	+76%	391	37	+29%	8.0	0.75	48%
South Carolina ›	3,586	70	-30%	2,407	47	-4%	61.4	1.19	46%
Tennessee ›	4,612	68	-33%	3,222	47	-2%	64.7	0.95	45%
Idaho ›	1,206	68	+20%	729	41	+33%	18.1	1.02	41%
North Dakota ›	462	61	+22%	219	29	-14%	2.3	0.30	43%