

We are delighted that you have chosen to visit Columbia Law School.

Touring our campus offers more than a sense of how to make your way from the classroom to the library; you will also see how you, as a student, can engage with faculty, your peers, and our community.

The main Law School building is Jerome L. Greene Hall. Classrooms and auditoriums here are equipped with state-of-the-art technology for multimedia presentations and video conferencing. They are used for lunchtime and evening lectures and panel discussions, which are sponsored by our institutes, centers, and more than 100 student organizations.

The lobby of Jerome L. Greene Hall functions as the Law School's public square. Student groups frequently set up tables here for recruitment events, and multimedia monitors provide up-to-date information about Law School events and links to our Twitter feed. There are comfortable areas for socializing, gathering, and studying.

Two nearby buildings, William C. Warren Hall and William and June Warren Hall, provide additional classroom, meeting, and administrative space. Lenfest Hall offers apartment-style living exclusively for law students.

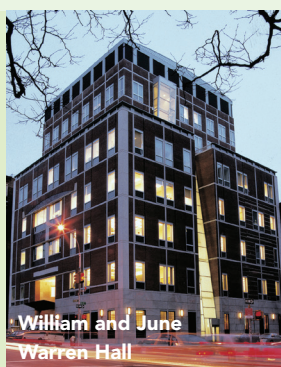
We hope you enjoy your tour of campus, and thank you for visiting. Please feel free to reach out to us at 212-854-2655 or at gls@law.columbia.edu with any questions.

The Office of Graduate Legal Studies
William and June Warren Hall
1125 Amsterdam Avenue (at 115th Street), 6th Floor
New York, NY 10027
9:30 a.m. to 5:00 p.m.

To obtain a schedule of law classes open to visitors, stop by our office during your visit or consult our website: www.law.columbia.edu/llm-jsd/visit



1 William and June Warren Hall (WJ) 1125 Amsterdam Avenue



6th floor: **The Office of Graduate Legal Studies (GLS)** serves as the admissions office for the LL.M. and J.S.D. programs, as well as our students' "home away from home" during the academic year. Stop by GLS to introduce yourself, pick up a visitor's pass to tour Diamond Law Library, and ask any questions you may have about our programs.

7th floor: **The Office of Career Services and Professional**

Development provides students and alumni comprehensive support to explore employment opportunities in the private sector.

8th floor: **Social Justice Initiatives (SJI)** offers programs and counseling for public interest law and government careers; summer opportunities in the United States and abroad; and pro bono and externship programs. SJI also hosts lectures and events on human rights and public interest issues.

2 The Greenhouse 424 West 116th Street

This small, red brick building known as the Greenhouse contains offices for several of the Law School's 14 academic journals, which include the *Columbia Business Law Review* and the *Columbia Human Rights Law Review*.

3 William C. Warren Hall 410 West 116th Street

Known as "Little Warren," this modern building is home to the *Columbia Law Review*, the Columbia Center on Sustainable Investment, and additional classroom space.

4 Jerome L. Greene Hall 435 West 116th Street



The Law School's core classrooms and faculty offices are located here. The main floor is our community's hub, with comfortable spaces for socializing, gathering, and studying. The video screens in the atrium showcase campus news and events.

On the third floor, the **Donald G. Drapkin Student Lounge** is a sunlit event space and place for quiet reading. The **Marguerite and Gerry Lenfest Café** is a convenient spot for all-day dining, with outdoor seating on a wraparound terrace. The third floor of Jerome L. Greene Hall opens onto **5 Charles H. Revson Plaza**, a landscaped common area and sculpture garden that bridges Amsterdam Avenue to connect the Law School with

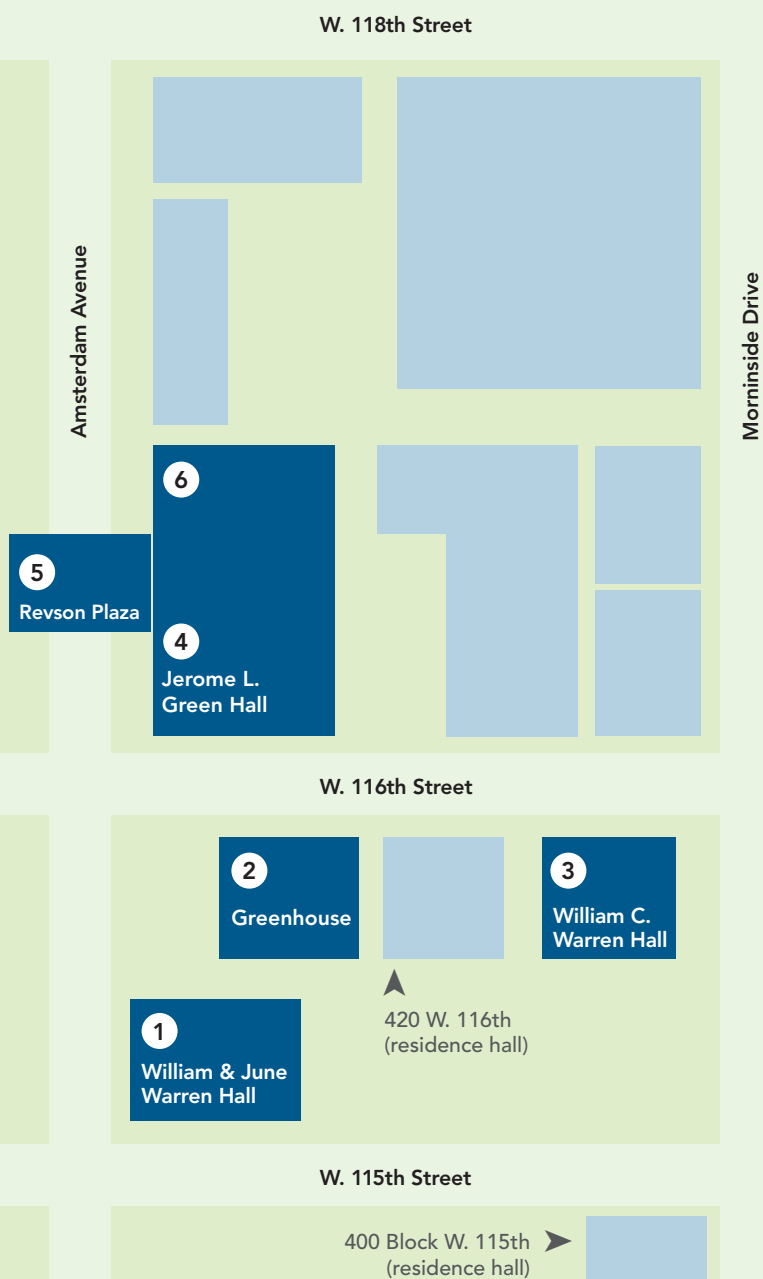
Columbia University's main campus. It is dominated by Jacques Lipchitz's 23-ton sculpture, *Bellerophon Taming Pegasus*.

On the second, third, and fourth floors, **6 The Diamond Law Library** contains more than 400,000 titles in 65 languages. **The Milton Handler Rare Books and Manuscripts Room** houses the Law School's many historical treasures, including original documents from the Nuremberg Tribunal and the South African Treason Trials. A guest pass is required to visit the library and may be obtained at the GLS office.

Faculty offices are located on the fifth through ninth floors, where the walls are lined with portraits of legendary alumni and professors who have contributed to the Law School's illustrious history.

The Law School's **Clinical Education Program** has offices on the eighth and ninth floors. Students meet here with clients to confer on their representation in a wide array of legal matters.

▲
Lenfest Hall (residence hall)
425 W. 121st Street



Welcome to Morningside Heights.

The Columbia campus has the vibrancy and intimacy of a college town within one of the world's greatest financial, legal, cultural, and culinary capitals.



1 FOOD TRUCKS AND FARMERS MARKET
A farmers market is held year-round on Thursdays and Sundays along Broadway, where food trucks also line the streets on school days. The food cart outside Jerome L. Greene Hall is a Law School favorite for halal chicken with rice.

2 SUBWAYS New York's 24-hour mass transit system offers easy access to recreational activities and employment opportunities.



15 minutes to Lincoln Center for the Performing Arts

30 minutes to SoHo, Tribeca, and Chinatown

20 minutes to Midtown, Broadway, Madison Square Garden, and Times Square

40 minutes to Wall Street, One World Trade Center, and Lower Manhattan courthouses

25 minutes to Grand Central Terminal, New York Public Library, Greenwich Village, the High Line, and the Whitney Museum

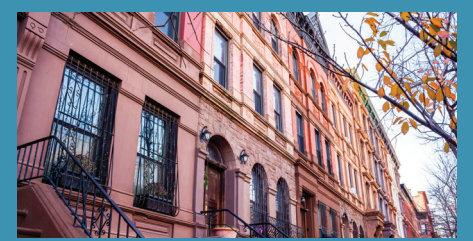
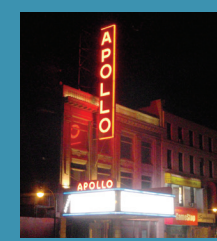
45 minutes to Williamsburg, the Brooklyn Academy of Music, and Barclays Center



4 DODGE FITNESS CENTER Columbia University's athletic complex has a swimming pool, indoor running track, squash courts, saunas, and extensive cardio and strength-training equipment.



5 MORNINGSIDE PARK Built on a steep incline on the eastern edge of campus, this dramatically landscaped park has spectacular sunrise views, along with basketball courts, baseball fields, and playgrounds.



7 HARLEM To the east and north of campus, this eclectic neighborhood was the setting for African-American-led movements in music, literature, dance, and art known as the Harlem Renaissance. From the Apollo Theater, Studio Museum, and El Museo del Barrio to gospel churches and soul food restaurants, Harlem retains its storied past while welcoming a diversity of new residents, restaurants, and businesses.



3 RIVERSIDE PARK This four-mile-long waterfront park borders the Hudson River and offers the most scenic biking and running paths in Manhattan, along with playgrounds, dog runs, tennis courts, and a skate park.



Washington, D.C.



Philadelphia

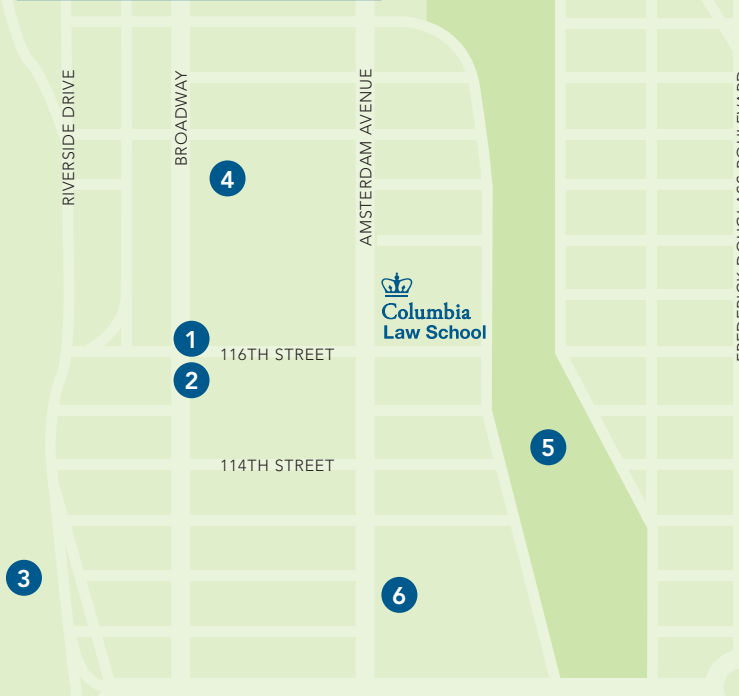


Boston



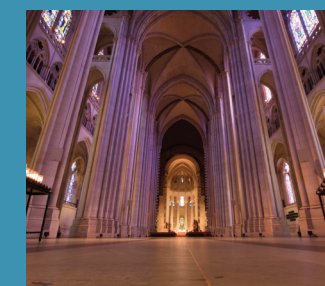
Catskill Mountains

WEEKEND GETAWAYS Our New York City location offers abundant opportunities by train or car to visit historic cities (Boston, Philadelphia, and Washington, D.C.); beach communities (the Hamptons and the Jersey Shore); and the countryside (the Berkshires, Catskills, and Hudson Valley).



8 CENTRAL PARK Designed in the mid-19th century by Frederick Law Olmsted and Calvert Vaux, this 843-acre green space in the heart of Manhattan is a pastoral counterpoint to frenetic city life. Its varied terrains and amenities include softball fields,

skating rinks, cycling and running lanes, tennis courts, playgrounds, ponds, woodland gardens, a zoo, and meandering walking paths. Students and faculty visit Central Park to relax and rejuvenate. "A lot of my unwinding time is done outside, which is not how many people think about experiencing the city," says Professor Olatunde Johnson.



6 LANDMARKS The largest cathedral in the world, St. John the Divine holds more than a dozen services a week for worshippers of many faiths and communities. Other iconic locales are Grant's Tomb and Tom's Restaurant, the exterior of which was made famous by the television show "Seinfeld."

OUR HISTORY



1754
Columbia University Founded

One of the first higher education institutions in the U.S., Columbia University was founded as King's College in Lower Manhattan. Its early students included Alexander Hamilton and John Jay.

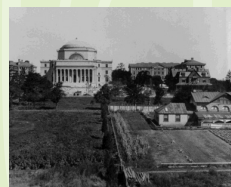


1858
Columbia Law School Founded

Columbia Law School was one of the first law schools established in the U.S., as well as a charter member of the Association of American Law Schools.

1893
Master of Laws Program Established

A renewed interest in legal scholarship sets in motion plans to award an advanced law degree, based on a fourth year of study. The degree is pursued chiefly by aspiring academics, though by the mid-20th century the degree began to attract international students desiring to learn more about the American legal system.

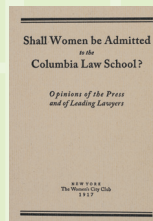
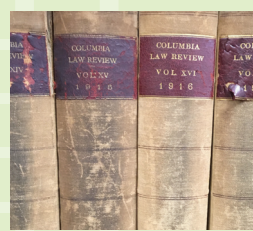


1897
Columbia Moves Uptown

To accommodate its many growing schools, Columbia University moved to its present Morningside Heights location in the late 1800s. The neoclassical campus was designed to be an urban intellectual enclave.

1901
Columbia Law Review Established

The *Columbia Law Review*, a student-run publication showcasing work by the most preeminent legal scholars, was first published to reflect the growing sophistication in legal thought. It is one of the most widely distributed and cited law reviews in the country.



1927
First Women Enroll at Columbia Law School

The Law School's early alumnae went on to become law firm partners, professors, judges, congresswomen, deans, and heads of nonprofit organizations. U.S. Supreme Court Justice Ruth Bader Ginsburg, Class of 1959, became the Law School's first female tenured professor in 1972.

1970
Columbia Creates Clinical Legal Education Program

The Law School's clinics provide free legal representation to underserved members of society and allow students the opportunity for hands-on training. The Law School is now home to more than 10 clinics, focusing on areas such as mediation, mass incarceration, and immigrants' rights.



1996
Jerome L. Greene Hall Expands

Columbia Law School's extensive \$140 million expansion and renewal project included a three-story skylit lobby in Jerome L. Greene Hall, with upper-level student lounges and a café. The main Law School building is regularly updated to better serve its growing community.

2017
Jerome L. Greene Foundation's \$15 Million Pledge

To increase public service opportunities and ensure future generations of deserving students can obtain a Columbia Law School education, the Jerome L. Greene Foundation pledged \$15 million in a three-part gift in early 2017. Greene was a member of the Class of 1928.

