



BANK FOR INTERNATIONAL SETTLEMENTS

BIS Working Papers

No 1002

Exorbitant privilege? Quantitative easing and the bond market subsidy of prospective fallen angels

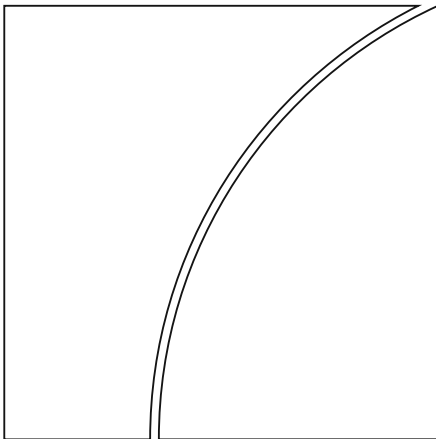
by Viral V Acharya, Ryan Banerjee, Matteo Crosignani, Tim Eisert and Renée Spigt

Monetary and Economic Department

February 2022

JEL classification: E31, E44, G21.

Keywords: Corporate bond market, investment-grade bonds, large-scale asset purchases (LSAP), credit ratings, credit ratings inflation.



BIS Working Papers are written by members of the Monetary and Economic Department of the Bank for International Settlements, and from time to time by other economists, and are published by the Bank. The papers are on subjects of topical interest and are technical in character. The views expressed in them are those of their authors and not necessarily the views of the BIS.

This publication is available on the BIS website (www.bis.org).

© *Bank for International Settlements 2022. All rights reserved. Brief excerpts may be reproduced or translated provided the source is stated.*

ISSN 1020-0959 (print)
ISSN 1682-7678 (online)

Exorbitant Privilege? Quantitative Easing and the Bond Market Subsidy of Prospective Fallen Angels*

Viral V. Acharya
NYU Stern, CEPR, ECGI, NBER

Ryan Banerjee
BIS

Matteo Crosignani
New York Fed

Tim Eisert
Erasmus Rotterdam, CEPR

Renée Spigt
Erasmus Rotterdam

February 2022

Abstract

We document capital misallocation in the U.S. investment-grade (IG) corporate bond market, driven by quantitative easing (QE). Prospective fallen angels—risky firms just above the IG rating cutoff—enjoyed subsidized bond financing since 2009, especially when the scale of QE purchases peaked and from IG-focused investors that held more securities purchased in QE programs. The benefiting firms used this privilege to fund risky acquisitions and increase market share, exploiting the sluggish adjustment of credit ratings in downgrading after M&A and adversely affecting competitors’ employment and investment. Eventually, these firms suffered more severe downgrades at the onset of the pandemic.

JEL Codes: E31, E44, G21.

Keywords: Corporate bond market, investment-grade bonds, large-scale asset purchases (LSAP), credit ratings, credit ratings inflation.

*We thank Ed Altman, Jennie Bai, Antonio Falato, Quirin Fleckenstein, Victoria Ivashina, Francis Longstaff, Camelia Minoiu, and Tyler Muir for their comments. We also thank seminar and conference participants at the NBER Summer Institute Capital Markets and the Economy, AFA Annual Meetings, Oxford Said–ETH Zurich Macro-finance Conference, 10th MoFiR Workshop on Banking, Deutsche Bundesbank/FRIC/CEPR “Credit Risk over the Business Cycle” conference, 2021 Federal Reserve Stress Testing Research conference, Bank of Spain, KU Leuven, Norges Bank, Erasmus Rotterdam, University of South Carolina, New York Fed, University of Bonn, Humboldt University, and the BIS for valuable comments. We thank Erica Bucchieri and William Arnesen for excellent research assistance. The views expressed in this paper are those of the authors and do not necessarily represent those of the Federal Reserve Bank of New York, the Federal Reserve System, the BIS, or any of their staff. A previous version of this paper circulated with the title “Exorbitant Privilege? The Bond Market Subsidy of Prospective Fallen Angels.”

1 Introduction

Risky firms just above the investment-grade (IG) cutoff face the prospect of becoming “fallen angels” upon a downgrade and experiencing a steep increase in their cost of borrowing. Despite this risk, the BBB segment of the bond market has been the fastest growing investment-grade rating category since the Global Financial Crisis. Between 2008 and 2020, the amounts outstanding of BBB-rated bonds have more than tripled in size to \$3.5 trillion, representing 55% of all investment-grade debt, up from 33% in 2008. During the same period, [Figure 1](#) shows that BBB bond spreads dropped from around 400 basis points to around 150 basis points (left panel) and the profitability of BBB-rated firms did not keep up with their increased indebtedness (right panel). These dynamics are unique to the BBB market. Other IG bond spreads did not fall as much during the same period and other IG-rated issuers actually improved their debt-to-profitability ratio.

In many respects, the growth of risky investment-grade bonds may be a desired outcome of crisis-related monetary policy easing. In particular, Quantitative Easing (QE) has aimed to push investors into riskier assets by lowering the yields on government and mortgage-backed bonds ([Gagnon et al., 2011](#)). However, the growing concentration of issuance in the riskiest investment-grade bucket also comes with a buildup of vulnerabilities in the corporate sector. The fragility of the BBB market materialized at the onset of the COVID-19 crisis. The

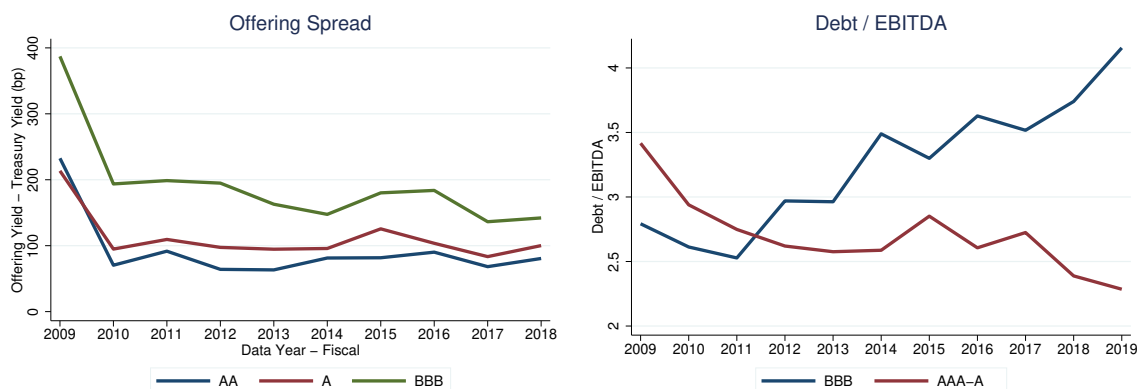


Figure 1: Increased fragility and lower bond financing costs for BBB-rated firms. This figure shows the increasing fragility and the declining bond financing costs for BBB-rated firms. The left panel shows the offering spread (primary market bond yields minus the Treasury yield with a similar maturity) for newly issued bonds. The right panel shows the asset-weighted debt over EBITDA for BBB and other IG-rated firms. [Figure B.5](#) provides further non-parametric evidence that the bond financing cost of BBB firms dropped significantly, more than the financing costs of other investment grade issuers

volume of debt downgraded from BBB in a few weeks at the beginning of 2020 was more than two times larger than the volume of similar downgrades during the entire Global Financial Crisis. The materialization of this vulnerability likely led to the Federal Reserve stepping in to stabilize the U.S. corporate bond market in the wake of the COVID-19 shock.¹

In this paper, we examine the causes and consequences of an exorbitant privilege in the form of a bond market subsidy for “prospective fallen angels”, i.e., firms on the cusp of the investment-grade cutoff. We classify prospective fallen angels as BBB-rated firms that are vulnerable to downgrades, and show that BBB bond growth has largely been driven by such firms. Our analysis shows that prospective fallen angels have benefited from investors subsidizing their bond financing since 2009, especially at the peak of QE.

Importantly, we document that investors highly exposed to the Federal Reserve QE drive the demand for bonds issued by prospective fallen angels. Prospective fallen angels meet this demand by issuing bonds, largely to finance risky acquisitions. In conjunction, rating agencies appear to inflate ratings and delay downgrades for these firms that engage in M&A transactions. We show, however, that such downgrades eventually materialized at the outbreak of the COVID-19 pandemic in March 2020, with prospective fallen angels that had engaged in M&A experiencing more severe downgrades.² Finally, we find that prospective fallen angels exert negative externalities on more prudent firms similar to the congestion effect created by zombie firms (Caballero et al., 2008).

In summary, our paper presents evidence consistent with a decade of capital misallocation in the U.S. corporate bond market, driven by QE-induced demand for IG bonds. We show theoretically that such an outcome can arise in equilibrium due to investors having higher demand for riskier bonds; in the specific context, investors such as insurance companies and

¹See Gilchrist et al. (2020) for details on the impact of the Federal Reserve’s intervention on fallen angels.

²Our findings echo the remarks made on March 20, 2020 by the Secretary of the Treasury Yellen, who stated that “*non-financial corporations entered this crisis with enormous debt loads, and that is a vulnerability. They had borrowed excessively in my view through issuing corporate bonds and leveraged loans. Arguably, this was a borrowing binge that was incited by the long period we had of low interest rates. Investors were also engaged in a search for yield, so this debt was attractive to pension funds, insurance companies, and investors [...]*” These remarks were made at the “COVID-19 and the economy” webinar at Brookings Institution ([link](#)).

pension funds face compressed yields and lower quantities of securities such as long-term Treasuries purchased by the Fed, and given their promised return on liabilities, seek out a greater quantity of riskier IG bonds. Our empirical analysis illustrating this mechanism combines various data sources at the issuer-level, bond-level, and investor-level. We use issuer-level data from Compustat and WRDS Capital IQ, and ratings data from Standard and Poor’s, Moody’s, and Fitch. Our bond-level data consists of primary market prices from Mergent and secondary market prices from TRACE. Finally, for a crucial part of our analysis that highlights the demand for risky bonds arising from IG-focused investors exposed to QE, we use investor holding-level data from eMAXX Bond Holders matched with security-level holdings in the Federal Reserve System Open Market Account (SOMA) portfolio.

We begin our empirical analysis by introducing a measure of downgrade-vulnerability based on the Altman Z'' -score (Altman, 2020b), a variable built with balance sheet and income statement information. Specifically, we classify a firm as downgrade-vulnerable if its Z'' -score is lower than the historical median Z'' -score of the next lowest rating category. We confirm the validity of our measure by documenting that downgrade-vulnerable firms (i) look worse along various observable firm characteristics, such as leverage, profitability, net worth, and interest coverage ratio; (ii) exhibit lower employment growth, investment, sales, and asset growth once they become vulnerable; and (iii) are more likely to be downgraded or put on negative watchlist/outlook than non-downgrade-vulnerable firms.

Using this measure, we define a “prospective fallen angel” as a BBB-rated firm that is vulnerable to being downgraded.³ We show that prospective fallen angels benefit from ratings inflation, defined as the difference between an issuer’s credit rating as implied by its Z'' -score and its observed credit rating. The ratings inflation for prospective fallen angels has been substantially increasing since 2009. Next, we document that there has been a reduction in bond spreads in the BBB segment, primarily driven by prospective fallen angels. The decline has been so dramatic that these firms have been able to obtain cheaper funding than

³In 2018, the corporate bond volume of prospective fallen angels amounted to \$1.5 trillion (\$0.5 trillion in 2009), compared to the \$0.5 trillion of BBB non-downgrade-vulnerable firms (\$0.25 trillion in 2009).

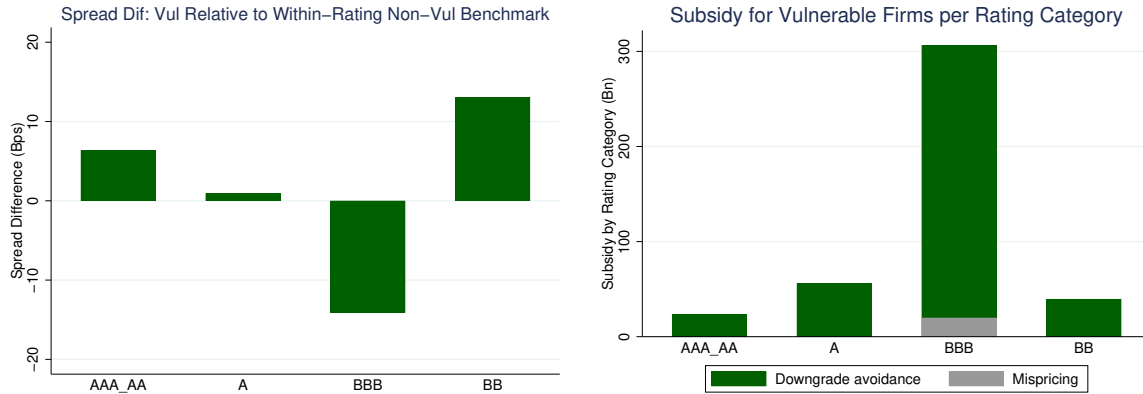


Figure 2: The privilege of prospective fallen angels. The left panel shows the difference in basis points between the mean offering spread of firms defined as being downgrade-vulnerable and the mean offering spread of non-downgrade-vulnerable firms in the same rating category. We classify a firm as downgrade-vulnerable if its estimated Z'' -score is lower than the Altman Z'' -score benchmark of the next lowest rating category. The right panel plots the total interest expenses that downgrade-vulnerable firms do not have to bear over the lifetime of their bonds, by not being downgraded to the next lowest rating category. The green bars are the difference between the mean offering spread of downgrade-vulnerable firms in a given rating category relative to the mean offering spread of non-downgrade-vulnerable firms in the next lowest rating category, multiplied by the average maturity and the total offering amount of the bonds in the downgrade-vulnerable rating category over the years 2009–2019. The bar in grey is based on the spread difference, if positive, between non-downgrade-vulnerable firms and downgrade-vulnerable firms. This component of the subsidy is computed by multiplying the aforementioned spread difference by the average maturity and the total offering amount of the bonds in the downgrade-vulnerable BBB rating category over the years 2009–2019.

their safer, i.e., non-downgrade-vulnerable counterparts, in the BBB rating class (Figure 2, left panel). Crucially, this pattern is only present for BBB-rated firms. We do not find analogous evidence in other rating categories. Moreover, such mispricing in borrowing cost is not observed in corporate bond markets pre-2009. When replacing the bond spread with an equity market based measure of expected default, spreads in syndicated loan markets, or bond spreads before the global financial crisis, we find that across all rating categories (including BBB), downgrade-vulnerable firms have higher—not lower—funding costs.

The mispricing in the BBB-rated segment allows us to identify a prospective fallen angel subsidy. The total subsidy that accrues to the firm is the interest expense savings over the lifetime of its issued bonds and is shown in the right panel of Figure 2. The subsidy consists of two components. One component derives from the mispricing of prospective fallen angels within the BBB rating bucket, shown by the grey bar. This is reminiscent of Caballero et al. (2008)’s subsidised credit measure. The second component, shown by the green bar, is the interest saving that accrues from not being downgraded to a speculative-grade rating. Here,

differences in the investor clientele and capital requirements between investment-grade and speculative-grade segments drive a big wedge in funding costs.⁴ In total, the subsidy accruing to prospective fallen angels amounted to \$307 billion between 2009 and 2019.⁵

We argue, and provide a theoretical sketch in [Appendix C](#), that such an exorbitant privilege in the form of a bond-market subsidy for prospective fallen angels can arise in equilibrium due to a higher investor demand for riskier corporate bonds. In practice, investors such as insurance companies seek out a greater quantity of riskier IG assets to meet their promised liabilities as IG assets are close substitutes for securities such as Treasuries purchased (and whose yields as a result get compressed) by the Fed in QE programs. This high demand induces prospective fallen angels to take on more debt and increase their risk-taking. In conjunction, since there appears to be a reluctance of credit rating agencies to downgrade issuers to speculative-grade and especially post-M&A, downgrades of prospective fallen angels are less likely in normal times, increasing the demand for their bonds by QE-exposed investors.

Our empirical tests that tease out this chain of logic are structured in three parts. First, we show that investors exposed to QE drive the demand for downgrade-vulnerable IG corporate bonds. We define investor-level time-varying QE exposure as the share of investor total holdings that are purchased by the Federal Reserve. Exploiting the granularity of our bond holdings data, we compare, in each quarter, holdings of bonds issued by the *same* firm that are held by investors with a different exposure to QE. The correlation between the firm’s bond holdings and QE-exposed investors is more pronounced for bonds issued by prospective fallen angels and more pronounced for investors such as insurance companies that focus on the IG market. In addition to helping understand the mechanism behind the subsidy for prospective fallen angels, the within-firm test based on QE-exposure of different investors clarifies that it is unlikely that the bond-market subsidy we uncover is driven by a BBB-firm-level “error” in

⁴For example, insurance companies face risk-based capital requirements for their holdings of corporate bonds. These requirements are progressively steeper with credit ratings, especially if the IG threshold is crossed ([link](#)).

⁵[Figure 14](#) reproduces the right panel using a matching procedure to compare downgrade-vulnerable firms with similar firms in the lower credit rating category.

Altman Z'' -score rendering it mistakenly as a downgrade-vulnerable firm.

Second, we show that downgrade-vulnerable firms, and prospective fallen angels in particular, meet the QE-induced demand by IG investors by supplying bonds largely for the purpose of financing risky acquisitions. These M&A deals allow downgrade-vulnerable issuers, and prospective fallen angels in particular, to prolong their rating inflation and substantially increase their market share. The high and increasing ratings inflation of prospective fallen angels appears to be driven by their M&A activity: announcements of acquisitions are usually accompanied by rosy forecasts about synergies and growth, and, more importantly, a promise to reduce the debt taken on to finance the acquisition, but data indicate that these end up being broken promises. In sum, prospective fallen angels exploit their funding privilege and the leniency of credit rating agencies to fund M&A and increase their market share. Again, the demand for bonds of M&A-undertaking prospective fallen angels stems from QE-exposed IG-focused investors. The resulting buildup of vulnerability over the extended period of QE led to an unprecedented wave of fallen angels at the onset of the COVID-19 pandemic, almost entirely among those firms that engaged in M&A. In addition, these firms were downgraded by more notches than other firms.

Third, we show that the privilege of prospective fallen angels, and the related increase in market share, adversely affects competing firms. Non-downgrade-vulnerable firms operating in an industry with a larger share of prospective fallen angels have lower employment growth rates, lower investment levels, lower sales growth rates, and lower markups compared with non-downgrade-vulnerable firms operating in an industry with a lower share of prospective fallen angels. Crucially, we do not find negative spillover effects when focusing on the overall share of downgrade-vulnerable firms, highlighting that the spillover effects arise only from prospective fallen angels which enjoy the exorbitant privilege in bond markets from QE-exposed investors.

The anecdotal evidence supports our narrative. For example, consider the consumer product giant Newell Brands, which we classify as a prospective fallen angel since 2014. Newell Brands enjoyed bond spreads 30–50 basis points below the median bond spreads of BBB-rated firms and used this cheap financing, at least partly, to finance acquisitions from 2014 to 2017. For example, Newell Brands acquired Jarden in 2016, leading to an increase in

leverage (gross debt/EBITDA) from 3 to 4.5. While the acquisition was accompanied by a promise to delever to 3–3.5 in 2–3 years, Newell Brands became more fragile post-M&A, an evolution not reflected by its credit ratings. In 2015, S&P rated the firm BBB- while our balance sheet implied rating was just B. S&P maintained a BBB- rating until 2018 even if our balance sheet implied rating dropped to CCC+ by that time. Newell Brands became eventually a fallen angel, dropping below the IG cutoff, only in 2019.

The remainder of the paper is structured as follows. [Section 2](#) discusses the related literature. [Section 3](#) documents the rapid growth of the investment-grade corporate bond market, driven by BBB-rated issuers after the Global Financial Crisis. [Section 4](#) presents the data, our measure of downgrade vulnerability, and the definition of prospective fallen angels. [Section 5](#) documents that prospective fallen angels have benefited from a bond financing subsidy, especially since 2013–14. [Section 6](#) shows that this subsidy originates in QE-driven investor demand for IG bonds paired with the leniency of credit rating agencies, especially when prospective fallen angels undertake M&As. [Section 7](#) discusses the cost of the subsidy enjoyed by prospective fallen angels. [Section 8](#) concludes.

2 Related literature

Our findings contribute to four inter-related strands of literature.

First, we contribute to the literature on the transmission of QE. This large literature has documented the effect of QE on asset prices (e.g., [Krishnamurthy and Vissing-Jorgensen \(2011\)](#)), lending outcomes (e.g., [Acharya et al. \(2019\)](#); [Luck and Zimmermann \(2020\)](#); [Rodnyansky and Darmouni \(2017\)](#)), and firm financing constraints (e.g., [Di Maggio et al. \(2020\)](#); [Foley-Fisher et al. \(2016\)](#)). In terms of macroeconomic outcomes, [Fabo et al. \(2021\)](#) document that only half of the academic papers find a statistically significant effect of QE on output. Our paper documents QE-induced capital misallocation, an important unintended consequence that might contribute to financial vulnerability, such as at the onset of the pandemic. In this vein, our paper is related to the speeches by [Rajan \(2013\)](#) and [Stein \(2013\)](#) who warned about the risks of QE in terms of excessive financial risk-taking; while they focused on likely distortions in the junk bond market, leveraged loan market, and real-estate

investment trust (REIT) borrowings, our paper shows that distortions have materialized even in the space of downgrade-vulnerable investment-grade bonds.

Second, we contribute to the literature on misallocation and fragility in corporate borrowing markets. The documented vulnerability of the investment-grade bond market since 2009 is consistent with warning signs from academics and practitioners about the BBB market (Altman, 2020b; S&P Global, 2020a; Blackrock, 2020; Morgan Stanley, 2018a,b) and partly explains the large price drop of investment-grade corporate bonds at the onset of the COVID-19 pandemic (Haddad et al., 2021; Boyarchenko et al., 2021; Altman, 2020a).⁶ The special role of the BBB market is consistent with the role of fire sale (cliff) risk documented in the literature (Falato et al., 2021b,a; Gilchrist et al., 2020; Acharya and Steffen, 2020). More generally, our findings are related to the literature on the misallocation of bank credit (Caballero et al., 2008; Acharya et al., 2020) and of other forms of financing (Midrigan and Xu, 2014; Whited and Zhao, 2021) as well as the role of low interest rates on misallocation (Banerjee and Hofmann, 2018, 2020). Our findings also fit the broader historical evidence documenting that low credit spreads and credit growth increase the probability of crises (Krishnamurthy and Muir, 2020; Gilchrist and Zakrajsek, 2012; Greenwood et al., forthcoming).

Third, we contribute to the literature on the real effects of frictions in investor portfolio choice. Consistent with the framework in Vayanos and Vila (2021), a few recent papers document the role of bond investors in the transmission of monetary policy (e.g., Ahmed et al. (2021); Darmouni et al. (2021)).⁷ Our paper documents that the reliance of bond investors on the IG cutoff, and thus on credit ratings, has interacted with QE policies to create capital misallocation and buildup of vulnerabilities in the massive BBB corporate bond market.

Fourth, we contribute to the literature on credit ratings. A large body of literature has shown that credit ratings affect investors' portfolio choice (Guerrieri and Kondor, 2012;

⁶Haddad et al. (2021) show that the extreme price movements at the onset of the COVID-19 pandemic were mostly in the safer end of the investment-grade market, consistent with investors trying to liquidate a large set of positions in bonds. See also Ivashina and Vallée (2020) for an analysis of fragility and reaching-for-yield behavior in the leveraged loan market.

⁷See also Kubitzka (2021) and Greenwood and Vissing-Jorgensen (2018) who analyze how the portfolio choice of insurance companies affect firms and the yield curve, respectively.

Cornaggia and Cornaggia, 2013; Iannotta et al., 2019; Baghai et al., 2020). Becker and Ivashina (2015) show that, within rating categories, investors reaching-for-yield might tilt their portfolio toward riskier assets. Goldstein and Huang (2020) show that, this behavior might, in equilibrium, induce credit rating agencies to inflate their ratings. Credit ratings inflation is discussed in, among others, Herpfer and Maturana (2021) who show that credit rating agencies are less likely and slower to downgrade firms with “performance-sensitive debt.” Finally, our paper is also related to Aktas et al. (forthcoming) who show that investment-grade firms are concerned in their M&A activity about acquisition-related downgrades; however, we find that such concern is less in the case of prospective fallen angels due to QE-induced demand for their bonds and rating agency leniency.

3 Aggregate evidence

In this section, we present some aggregate facts. Section 3.1 documents the sizable growth of the U.S. corporate debt market, mostly driven by BBB-rated issuers, following the Global Financial Crisis. Section 3.2 shows that, during the same period, IG corporate issuers paid historically low bond yields while becoming considerably riskier—a dynamic particularly pronounced for BBB-rated issuers. Section 3.3 shows the unprecedented wave of fallen angels at the onset of COVID-19, before the Federal Reserve intervened to support this market.

3.1 The growth of non-financial corporate debt

After reaching \$43 trillion in 2008, U.S. private debt, which denotes the sum of households and non-profit organizations debt, non-financial business debt and domestic financial sector debt, decreased to \$39 trillion in 2011 and then steadily increased reaching \$51 trillion today, a dynamic accelerated by the COVID-19 pandemic. While the deleveraging in 2008–11 was mainly driven by the financial and household sectors, the subsequent private debt cycle has

been predominantly driven by the *corporate* non-financial sector.⁸

The steady increase of non-financial business debt over the past 10 years has made it the largest private debt category today, equivalent to 82% of GDP in 2020. The last credit cycle has been entirely driven by non-financial business debt, which increased from \$10 trillion in 2008 to \$17 trillion in 2020. The increase in non-financial corporate debt has been mostly driven by corporate bonds, with the stock outstanding increasing from around \$3 trillion in 2009 to around \$6 trillion in 2020. This increase, in turn, is almost entirely driven by bonds issued by BBB-rated firms, namely the lowest rated segment of the investment-grade bond market. This segment has tripled in size from around \$0.7 trillion in 2009 to more than \$2 trillion in 2018 and represents around 52% of all IG bonds outstanding, up from 33%.

3.2 Firm risk and bond yields

The growth of the BBB segment of the bond market has been accompanied by a deterioration in the quality of BBB-rated firms and a substantial reduction in their bond financing costs. The deterioration of issuer quality has been discussed in industry pieces (Morgan Stanley, 2018a,b; Blackrock, 2020) and specialized papers (Çelik et al., 2020; Altman, 2020b; S&P Global, 2020a) that warned about the risk of a wave of “fallen angels,” namely a large number of downgrades of BBB-rated firms to the sub-IG (or “speculative-grade”) market.

In Figure 3, we document the deterioration in issuer quality and the drop in yields paid by BBB-rated firms since 2009. The left panel shows the share of firms that are vulnerable to a downgrade based on the Altman *Z*’-score, a measure of credit risk calculated with income statement and balance sheet information (Altman, 2020a). We explain this measure of downgrade vulnerability in more detail in Section 4.2. The figure shows that the share of firms that are vulnerable to a downgrade increased substantially in the BBB-market, but not in other markets, since 2013. The right panel confirms that the growth of the BBB market is driven by these “prospective fallen angels.” Since 2009, their stock of bonds outstanding

⁸Appendix B.1 describes the evolution of aggregate private debt and the contribution of corporate debt since the Global Financial Crisis.

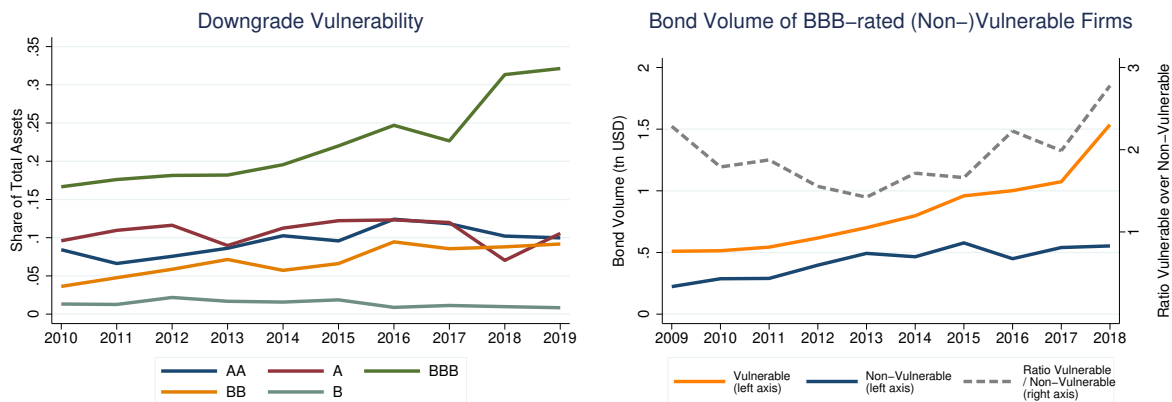


Figure 3: Increased downgrade-vulnerability of BBB-rated firms. This figure shows the increased downgrade-vulnerability of BBB-rated firms. The left panel shows the share of firms that are vulnerable to a downgrade based on the Z -score by rating category, where firms are weighted by total assets. The right panel shows, within the BBB rating category, the share of stock of bond debt issued by vulnerable and non-vulnerable BBB-rated firms. The dashed line is the ratio between these two series.

tripled in size to \$1.5 trillion in 2018. During the same period, the non-downgrade-vulnerable segment increased only from \$0.2 to \$0.5 trillion.

3.3 Risk materialization during COVID-19

The onset of the COVID-19 crisis precipitated an unprecedented wave of fallen angels until the Federal Reserve stepped in and extended its investment-grade corporate bond purchase program to support recently fallen angels. We interpret this episode as ex-post evidence of the increased vulnerability of BBB-rated firms, and of prospective fallen angels in particular. The evidence presented here is non-parametric. We provide formal tests in [Appendix B.4](#).

The volume of debt downgraded from BBB to speculative-grade in just a few weeks at the beginning of 2020 was more than two times larger than the volume of similar downgrades during the entire Global Financial Crisis. The left panel of [Figure 4](#) shows that, in 2020, the total debt of fallen angels amounted to an unprecedented \$320 billion.

The right panel shows the monthly spreads of firms that were rated BBB in 2019, distinguishing between firms that were downgraded at the onset of the pandemic (fallen angels) and those that maintained their BBB rating. We observe a sudden increase in the spreads of fallen angels before the Federal Reserve expanded its corporate bond buying program on April 9, 2020 to include those issuers downgraded from BBB to fallen angels

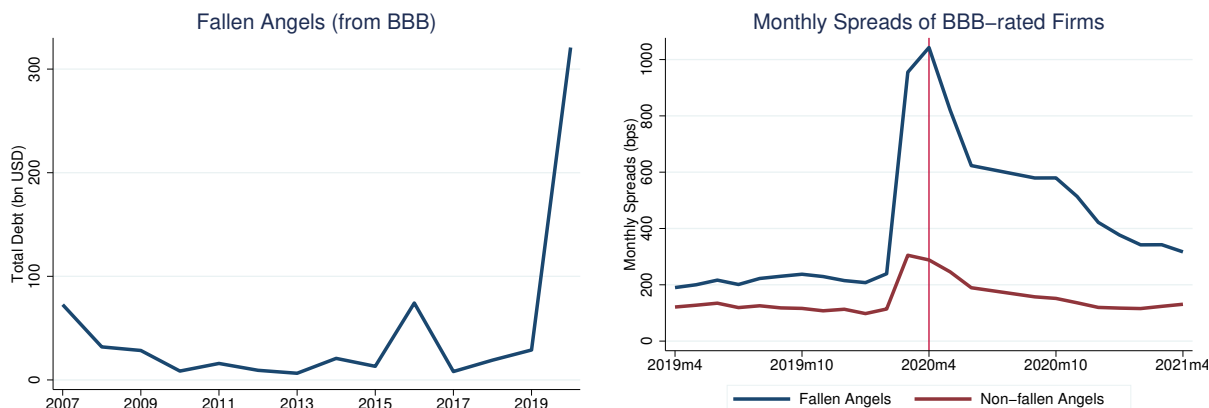


Figure 4: Risk materialization during COVID-19. This figure shows that the vulnerability of the BBB market materialized at the onset of the COVID-19 pandemic. The left panel shows total debt downgraded from BBB to speculative-grade from 2007 to 2020. The right panel shows monthly spreads of firms rated BBB in 2019. The blue line represents the spreads of fallen angels, namely firms downgraded during the COVID-19 pandemic. The red line represents the spreads of firms that maintained their IG status.

between March 22, 2020 and April 9, 2020. Some examples of firms eligible for the program are Ford Motor, Macy’s, and Occidental Petroleum (S&P Global, 2020b), all of which are classified as prospective fallen angel in our data. We discuss this definition in the next section.

4 Identifying prospective fallen angels

In this section, we describe our data and explain our strategy to identify downgrade-vulnerable firms, including prospective fallen angels. Section 4.1 describes our data sources and data construction. Section 4.2 introduces our definition of downgrade-vulnerable firms.

4.1 Data

Our main data set consists of firm-level, bond-level, and investor-level data from 2009 to 2019. See Appendix A for a detailed explanation of our data sources and data construction.

The firm-level data includes debt capital structure data, balance sheet information, and rating information. The debt capital structure data is from WRDS Capital IQ, which provides extensive capital structure information for over 60,000 public and private companies globally. The balance sheet data is from Compustat North America, which provides annual report information of listed American and Canadian firms. Rating information is from Refinitiv

Eikon, which provides worldwide coverage on ratings from S&P, Moody’s, and Fitch. We follow [Becker and Milbourn \(2011\)](#) in mapping credit ratings into numerical values. Lastly, we use ThomsonOne for mergers and acquisitions data. Combining these various data sources, we analyze 6,145 firms.

The bond-level data set consists of pricing information for the U.S. corporate bond market. For the primary market, we use Mergent Fixed Income Securities Database (FISD), a fixed income database that includes issue details of publicly-offered U.S. bonds. We examine 6,460 bond issues by 909 issuers. For the secondary market, we obtain data from TRACE, a database of real-time secondary market information on transactions in the corporate bond market. We examine 7,741 outstanding bonds issued by 1,146 firms. In our analysis of the COVID-19 crisis, we extend our data set to 2020.

The investor-level data is from eMAXX Bond Holders data from Refinitiv, a detailed data set of security-level holdings by individual investors at a quarterly frequency. We match this data with the Fed security-level holdings in the SOMA portfolio (this data is publicly available on the website of the New York Fed). We also match this data with issuer- and security-level data set from the rest of our analysis and collapse holdings within an investor at the issuer-level. The investor-level data has information on 2,750 investors, mostly property and casualty insurance policies (934), mutual funds (800), life and health insurance policies (590), and annuities (223) covering investments in 1,442 corporate bond issuers.

4.2 Downgrade-vulnerable firms

In this section, we explain how we identify downgrade-vulnerable firms and show evidence of substantial and increasing rating inflation for BBB-rated firms since 2009.

We define downgrade-vulnerable firms based on the Altman Z'' -score, a measure of credit risk calculated from income statement and balance sheet information ([Altman, 2020a](#)). The Altman Z'' -score is defined as:

$$Z'' = 6.56 \times \frac{\text{Current Assets} - \text{Current Liabilities}}{\text{Total Assets}} + 3.26 \frac{\text{Retained Earnings}}{\text{Total Assets}} + 6.72 \frac{\text{EBIT}}{\text{Total Assets}} + 1.05 \frac{\text{Book Value of Equity}}{\text{Total Liabilities}}$$

Specifically, we classify a firm as downgrade-vulnerable if its Z'' -score is lower than the

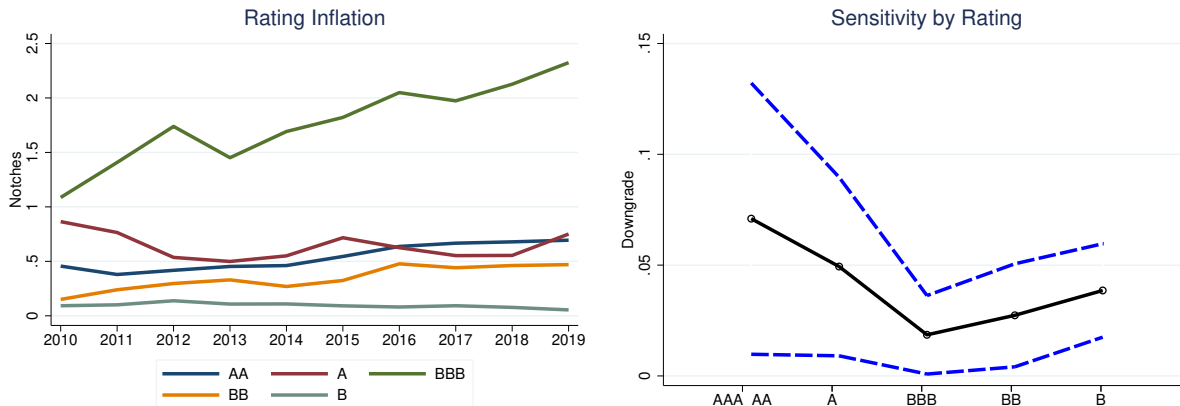


Figure 5: High and increasing credit ratings inflation for BBB-rated issuers. This figure shows credit ratings inflation across rating categories. The left panel shows credit ratings inflation based on firm Z -score relative to Z -scores of firms in lower ratings buckets. Credit ratings inflation is equal to zero if an issuer has a Z -score above the median Z -score of firms in the next lower rating category, otherwise credit ratings inflation is calculated as the number of notches between the issuer’s credit rating notch (e.g., AA+, AA, AA-, A) and the credit rating notch implied by its Z -score. The figure shows asset weighted credit ratings inflation in each year. The right panel shows how being classified as downgrade-vulnerable correlates with an actual downgrade across rating categories. The line shows, for each rating category, the estimated β_1 coefficient from the following regression specification: $Y_{iht+1} = \beta_1 Vulnerable_{iht} + \beta_2 X_{iht} + \mu_{ht} + \epsilon_{iht+1}$, where i is a firm, h an industry, t a year, Y_{iht+1} is a dummy equal to one in the case of a downgrade event in $t + 1$ (to qualify as downgrade event, a firm must be downgraded by at least one rating category in year $t + 1$, i.e. a firm that has a rating of A+, A, or A- is downgraded to at least BBB+), $Vulnerable$ is a dummy equal to one if a firm is downgrade-vulnerable in period t , μ_{ht} are industry-year fixed effects, and X_{iht} is a vector of controls (log of total assets, leverage, and interest coverage ratio). The error bars represent 95 percent confidence intervals, with standard errors clustered at the firm-level.

historical median Z -score of the next lowest rating category.⁹ For example, a BBB-rated firm is classified as downgrade-vulnerable if its Z -score is below the median Z -score of BB-rated firms. A prospective fallen angel is a BBB-rated firm classified as downgrade-vulnerable.

We validate our measure of downgrade-vulnerability in [Appendix B.3](#), where we show that (i) downgrade-vulnerable firms look worse along observables compared with non-downgrade-vulnerable firms (e.g., lower net worth, sales growth, investments, employment growth, interest coverage ratio, profitability, and higher leverage), (ii) downgrade-vulnerable firms are more likely to be downgraded and to be assigned a negative credit watch or outlook relative to

⁹We thank Ed Altman for providing us with these median “benchmark” Z -scores for each rating category. The bond rating equivalents are determined by calibrating the Z -scores to median values of each of the S&P rating categories for various years over the last 50 or more years (Altman, 2020a). For a discussion on Z -models, we refer to Altman (2018) and Altman et al. (2019).

non-downgrade-vulnerable firms, and (iii) firms' performance deteriorates after becoming downgrade-vulnerable (decline in sales growth, investments, firm size, and employment).

The Z'' -score documents a substantial and increasing ratings inflation for BBB-rated issuers. Credit ratings inflation is defined as zero for issuers that have a Z'' -score above the median Z'' -score of firms in the next lower rating category and equal to the difference between the issuer credit rating notch (e.g., AA+, AA, AA-) and the credit rating notch implied by its Z'' -score otherwise.¹⁰ The left panel of [Figure 5](#) shows that credit ratings inflation is highest for BBB-rated issuers, markedly increasing since 2009. The high ratings inflation for BBB-rated issuers is consistent with credit rating agencies' reluctance to downgrade BBB-rated firms to the speculative-grade market. The right panel shows that downgrade-vulnerable firms are more likely to be downgraded in each rating bucket, but that this correlation is the lowest for BBB-rated issuers. This is consistent with other studies and anecdotal evidence.¹¹

Panel A of [Table 1](#) shows that the characteristics of bonds issued by downgrade-vulnerable firms are similar to those issued by non-downgrade-vulnerable firms. The remaining maturities are similar, with a median remaining maturity of 6.7 years. The offering amounts are also similar as is the likelihood of bonds being classified as senior. On average, secondary market spreads on bonds issued by downgrade-vulnerable firms are *lower* than spreads of non-downgrade-vulnerable firms. Panel B, however, shows that this is driven by a composition effect across the sample. Within each rating category, the mean and median secondary market spreads of bonds issued by downgrade-vulnerable firms are *higher* than those of their non-downgrade-vulnerable peers. The one exception is the BBB segment where the mean bond spread of prospective fallen angels is around 4 basis points lower than their non-vulnerable peers, while the median spread is around 7 basis points lower. We analyse this anomaly in more detail in the next section.

¹⁰See [Appendix A](#) for additional details on the conversion of ratings notches to numerical values.

¹¹For example, [Bruno et al. \(2016\)](#) show that Moody's avoids downgrading issuers of corporate bonds that are close to losing their investment-grade status. Investment bank analysts paint a similar picture of ratings inflation. For example, in 2018, a research note by Morgan Stanley noted that, "... where 55% of BBB debt would have a speculative-grade rating if rated based on leverage alone. Meanwhile, interest coverage has declined steadily since 2014, particularly for BBB issuers..." ([Morgan Stanley, 2018a](#)).

Panel A: Bond-level descriptive statistics

Variable	Vulnerable	Mean	StDev	p25	p50	p75
Remaining maturity	No	9.6	8.5	4.0	6.7	9.9
Remaining maturity	Yes	10.0	9.0	3.7	6.7	12.8
log(offering amount)	No	13.2	0.6	12.6	13.1	13.5
log(offering amount)	Yes	13.4	0.7	12.9	13.3	13.8
Senior bond	No	0.7	0.4	0.0	1.0	1.0
Senior bond	Yes	0.7	0.4	0.0	1.0	1.0
Spread	No	223.4	206.4	117.7	170.4	265.4
Spread	Yes	217.0	219.9	107.9	166.0	246.0

Panel B: Bond spreads by rating

Rating	Vulnerable	Mean	StDev	p25	p50	p75
AAA	No	78.8	36.4	53.5	79.8	107.3
AAA	Yes	79.9	41.5	44.0	85.0	112.0
AA	No	89.8	51.7	42.2	87.5	133.8
AA	Yes	90.7	46.6	49.3	92.5	127.2
A	No	123.5	51.6	82.4	128.8	160.4
A	Yes	131.1	50.3	92.3	134.1	169.3
BBB	No	190.8	77.0	136.4	186.1	239.9
BBB	Yes	186.8	77.9	130.8	179.4	235.1
BB	No	338.1	129.6	257.8	340.7	417.1
BB	Yes	385.3	146.2	285.6	379.7	484.0
B	No	513.2	230.4	364.0	496.6	629.5
B	Yes	634.6	287.5	434.9	632.3	788.2
CCC	No	1496.1	901.5	783.2	1150.9	1955.2
CCC	Yes	1606.0	964.4	1047.7	1285.1	1895.8

Table 1: Bond-level summary statistics. This table reports bond-level summary statistics. Panel A shows descriptive statistics for all bonds in our sample. Panel B shows secondary market spreads by issuers' downgrade-vulnerability.

5 The exorbitant privilege

In this section, we document the extraordinarily low bond financing costs of prospective fallen angels since 2009. This trend is particularly evident between 2013 and 2016, a period coinciding with the rapid growth of the Federal Reserve’s balance sheet as a result of its QE purchases.

First, we show that the drop in BBB bond spreads documented above coincides with a marked decline of the spreads of downgrade-vulnerable issuers relative to non-downgrade-vulnerable issuers—a dynamic unique to the BBB market. Figure 6 shows secondary market spreads between downgrade-vulnerable and non-downgrade-vulnerable issuers rated A, BBB, and BB. The difference in the spread between prospective fallen angels and non-downgrade-vulnerable BBB-rated firms is (i) hovering around zero, (ii) *negative* from 2013 to 2016, and (iii) almost always smaller than the same difference in the A and BB markets.

Second, we confirm the existence of a privilege of prospective fallen angels using a formal test. We compare the bond spreads of downgrade-vulnerable and non-downgrade-vulnerable

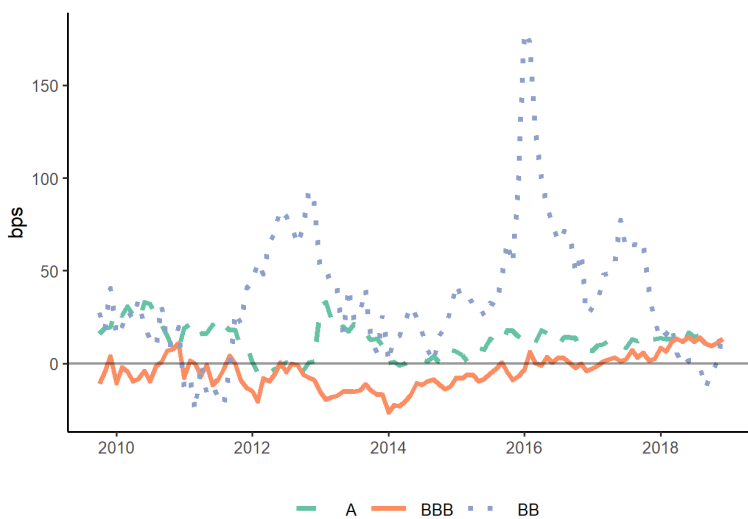


Figure 6: Bond spreads: downgrade-vulnerable minus non-downgrade-vulnerable firms. This figure shows the difference in secondary market spreads between downgrade-vulnerable and non-downgrade-vulnerable issuers, separately for issuers rated A (dashed line), BBB (solid line), and B (dotted line).

firms within a rating category by estimating the following specification:

$$\text{Spread}_{bit} = \beta_1 \mathbf{Rating}_{it} + \beta_2 \mathbf{Rating}_{it} \times \text{Vulnerable}_{it} + \delta \mathbf{X}_{bt} + \mu_{ht} + \epsilon_{bit} \quad (1)$$

where Spread_{bit} is the spread (in basis points) of bond b issued by firm i in year t . Bond spreads are the difference between bond and Treasury yields with a similar maturity. \mathbf{Rating}_{it} is a vector of dummy variables corresponding to firm i rating in year t and Vulnerable_{it} is an indicator variable equal to one if issuer i is classified as downgrade-vulnerable in year t . We also include a vector \mathbf{X}_{bt} of bond-level characteristics in year t (remaining maturity, mean bid-ask spread, and dummy variables for callable bonds, convertible bonds, and senior bonds) and industry-year fixed effects μ_{ht} . Due to a relatively low number of bonds with a AAA rating, we combine AAA-rated and AA-rated firms into one category.

Table 2 presents the estimation results. The first column shows the estimation results in the full sample period. As expected, the uninteracted terms show that bond spreads increase as the ratings deteriorate. The interaction terms show that in all rating categories, except BBB, downgrade-vulnerable firms have either higher financing costs (AAA-AA, BB, B, CCC) or statistically indistinguishable financing costs (A) compared with non-downgrade-vulnerable firms. This correlation is reversed for BBB-rated firms as prospective fallen angels pay significantly *lower* financing costs than non-downgrade-vulnerable BBB firms. The second column shows the estimation results in the subsample running from 2013 to 2016. In this period of substantial monetary easing, the funding privilege of prospective fallen angels increases in magnitude.¹² The third and fourth columns show similar estimation results using primary market offering spreads as a dependent variable. Additionally, in Appendix B.6, we show that, consistent with an exorbitant privilege of prospective fallen angels, the sensitivity of bond spreads to changes in credit risk (measured with expected default frequencies) is the weakest for BBB-rated issuers.

Table 3 shows that this privilege is unique to the corporate bond market in the last

¹²See Figure B.8 for evidence about the stance of monetary policy in our sample period.

	Spread _{it}	Spread _{it}	Offer Spread _{it}	Offer Spread _{it}
A _{it}	39.543*** (8.489)	49.667*** (8.624)	30.674** (14.738)	12.506 (8.150)
BBB _{it}	101.458*** (8.791)	111.983*** (9.183)	125.975*** (14.795)	103.315*** (8.369)
BB _{it}	244.896*** (10.931)	244.390*** (12.921)	308.159*** (18.125)	260.369*** (14.521)
B _{it}	395.971*** (16.245)	367.663*** (26.416)	485.593*** (21.700)	411.078*** (22.242)
CCC _{it}	1,079.020*** (104.982)	1,068.282*** (191.351)	679.465*** (70.501)	453.226*** (32.475)
Vulnerable _{it} × AAA-AA _{it}	23.464*** (8.493)	29.006*** (8.397)	8.094 (16.166)	-13.320 (9.829)
Vulnerable _{it} × A _{it}	-3.902 (5.458)	-13.656 (8.990)	-6.086 (9.652)	-3.535 (11.968)
Vulnerable _{it} × BBB _{it}	-18.186*** (4.700)	-33.213*** (7.093)	-27.477*** (8.304)	-36.186*** (9.072)
Vulnerable _{it} × BB _{it}	30.919*** (10.585)	38.307*** (12.909)	34.649** (14.559)	49.141** (23.501)
Vulnerable _{it} × B _{it}	79.032*** (26.524)	57.533* (32.964)	54.550 (33.141)	57.205 (58.371)
Vulnerable _{it} × CCC _{it}	447.860** (187.435)	489.553* (251.471)		
Industry-Year FE	✓	✓	✓	✓
Bond-level controls	✓	✓	✓	✓
Sample	Entire	2013–16	Entire	2013–16
Observations	19,322	9,015	3,133	1,160
R-squared	0.744	0.735	0.913	0.922

Table 2: The exorbitant privilege of prospective fallen angels. This table shows the estimation results of specification (1). The dependent variable in columns (1)-(2) is the secondary market bond spreads. The dependent variable in columns (3)-(4) is the primary market bond spread. Bond spreads, measured in basis points, are the difference between bond and Treasury yields of the same maturity. Vulnerable is a dummy equal to one if a firm is downgrade-vulnerable. Bond level controls are remaining maturity, bid-ask spreads, and dummy variables for callable bonds, convertible bonds, and senior bonds are included in the estimation but not reported for brevity. These specifications include industry-year fixed effects (2-digit SIC). Standard errors are clustered at the firm-level. *** p<0.01, ** p<0.05, * p<0.1.

decade.¹³ The first two columns use the (log) expected default frequency derived from equity markets at the 2-year and 5-year horizons as dependent variables, respectively. While we confirm that the estimated coefficients on the uninteracted terms increase monotonically as ratings deteriorate, the funding advantage of prospective fallen angels disappears, suggesting

¹³Given a limited number of observations in the highest rating buckets AAA and AA, especially in the syndicated loan market data, we further combine AAA-A ratings into a single rating category.

	EDF 2Y _{it}	EDF 5Y _{it}	Spread _{it}	Spread _{it}
BBB _{it}	0.646*** (0.084)	0.567*** (0.065)	11.742 (14.271)	27.209* (14.827)
BB _{it}	1.580*** (0.101)	1.308*** (0.079)	65.479** (28.847)	73.607*** (15.741)
B _{it}	3.089*** (0.120)	2.470*** (0.093)	184.286*** (24.703)	160.509*** (17.044)
CCC _{it}	4.640*** (0.192)	3.624*** (0.166)	245.292** (103.430)	290.345*** (54.476)
Vulnerable _{it} × AAA-A _{it}	0.484*** (0.160)	0.434*** (0.136)	10.737 (7.709)	28.072* (16.952)
Vulnerable _{it} × BBB _{it}	0.361** (0.152)	0.283** (0.120)	21.285* (11.020)	13.721* (7.147)
Vulnerable _{it} × BB _{it}	0.713*** (0.166)	0.560*** (0.129)	23.706* (13.454)	22.946*** (7.094)
Vulnerable _{it} × B _{it}	0.817*** (0.180)	0.691*** (0.140)	53.516* (27.960)	42.873*** (12.400)
Vulnerable _{it} × CCC _{it}	0.360 (0.284)	0.416* (0.240)	327.271*** (65.169)	17.238 (71.769)
Industry-Year FE	✓	✓	✓	✓
Bond-level controls	✓	✓	✓	✓
Sample	Entire	Entire	2002-2007	Synd. loans
Observations	4,223	4,223	1,855	5,273
R-squared	0.780	0.804	0.715	0.516

Table 3: The exorbitant privilege is unique to the bond market post-2009. This table shows the estimation results of specification (1). This table provides robustness checks on mispricing in different markets and time periods. The dependent variable in columns (1)-(2) are the expected default frequencies at the 2-year and 5-year horizon, respectively. The dependent variable in column (3) is the secondary market bond spreads in the pre-Global Financial Crisis period (2002–2007). The dependent variable in columns (4) is the all-in-drawn spread for syndicated loans taken from DealScan. The specifications include industry-year fixed effects (2-digit SIC). Standard errors are clustered at the firm-level. *** p<0.01, ** p<0.05, * p<0.1.

that the exorbitant privilege is specific to the bond market. Second, the third column shows that between 2002 and 2007 (the last business cycle before the Global Financial Crisis), prospective fallen angels firms did not benefit from a similar privilege. In contrast, prospective fallen angels paid higher spreads in this period, in line with other rating categories. Lastly, the fourth column shows that these firms did not have a similar funding advantage in the syndicated loan market. Taken together, these results suggest that the exorbitant privilege of prospective fallen angels is unique to bond markets since 2009. In [Appendix B.5](#), we rule out that our results are driven by the inclusion of bond covenants.

6 The origins of the exorbitant privilege

We now discuss the origins of the exorbitant privilege. [Section 6.1](#) presents a theory that explains how the exorbitant privilege can arise in equilibrium. [Section 6.2](#) to [Section 6.4](#) provide empirical evidence supporting this theory.

6.1 Theoretical framework

In this section, we explain the origin of the exorbitant privilege of prospective fallen angels which relies on the interplay of three critical factors. First, a large demand for investment-grade bonds. Second, risk-taking behavior of investors, and in turn, of issuers. Third, a leniency of credit ratings agencies to downgrade when firms increase their risk-taking.

We present our framework in detail in [Appendix C](#). [Figure 7](#) outlines the intuition. By absorbing large quantities of fixed income securities from the market, QE induces investors to rebalance their portfolios. In practice, investors such as insurance companies seek out a greater quantity of riskier IG assets to meet their promised liabilities as yields (as well as quantities) of their traditional investments such as long-term Treasuries are compressed by the Fed in QE programs. The high demand for corporate bonds reduces the cost of bond financing, inducing issuers to potentially take on more debt; in turn, more indebted issuers take on more risks, the outcome of a standard risk-shifting mechanism. This mechanism is consistent with substantial anecdotal evidence. For example, the Financial Times reports that *“insurance companies such as AIG and MetLife hold huge investment books, mainly consisting of bonds, to back the promises they make to their customers. Over the past decade, they have increasingly moved into riskier assets, according to Fitch, as yields in safer categories have fallen under aggressive easing policies from the world’s central banks.”*¹⁴

The extent of the increase in firms’ risk-taking, however, depends on whether issuers are vulnerable to a downgrade and the leniency of credit rating agencies in downgrading firms to the next rating bucket, especially at the boundary of IG rating (BBB). Non-downgrade-

¹⁴Source: “Search for yield draws U.S. life insurers to risky places,” Financial Times, February 21, 2019.

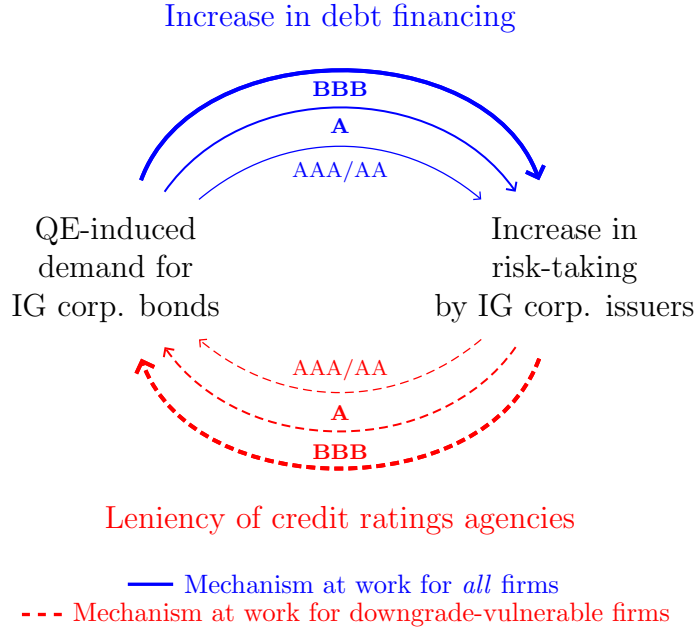


Figure 7: Scheme of model intuition. This figure shows the intuition behind the model. QE induces an increase in demand for investment-grade corporate bonds causing, in turn, an increase in issuers’ debt financing. The now more indebted issuers take on more risk. This effect (blue solid lines) is at work for all firms and stronger as we move down the rating categories within the investment-grade space. Given that credit rating agencies are sluggish in downgrading firms (especially those close the investment-grade threshold), the increased risk-taking by downgrade-vulnerable issuers is met again by high demand by investors sensitive to credit ratings. This effect (red dashed lines) is only at work for downgrade-vulnerable firms and stronger as we move down the rating categories within the investment-grade space.

vulnerable issuers are *ex ante* unlikely to be downgraded and thus benefit less from the leniency of credit rating agencies, relative to any additional risks they may take. By contrast, downgrade-vulnerable issuers are *ex ante* more likely to be downgraded and thus benefit more from the leniency of credit rating agencies if they take additional risks. The intuition is similar to risk-shifting incentives which depend on the distance to default, but risk-shifting in the setting at hand is indirectly subsidized by risk-seeking investors and sluggish credit rating downgrades.

Figure 8 illustrates the main results of the framework presented in Appendix C. The top panel shows bond yields as a function of firm quality, with firms grouped by credit ratings. Firms are ordered by decreasing quality on the x-axis. The blue line, corresponding to the baseline economy, shows that bond yields increase as firms deteriorate in quality. At each rating cutoff there is an additional jump, particularly pronounced at the investment-grade cutoff between BBB-rated and BB-rated firms, capturing the importance of ratings (and of

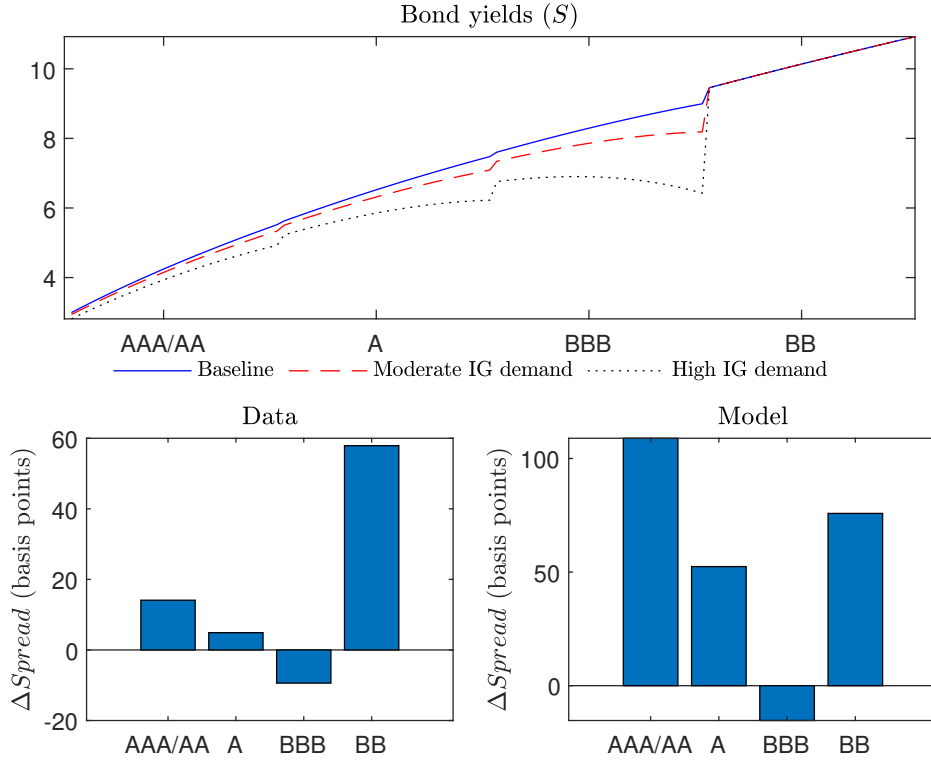


Figure 8: Corporate bond yields, model and data. The top panel presents the corporate yield curve with yields on the y-axis and firms sorted by quality, and grouped in credit ratings, on the x-axis. The solid blue line, the red dashed line, and the black dotted line represent a baseline economy, an economy with moderate demand for IG corporate bonds, and an economy with high demand for IG corporate bonds. The bottom panel shows, for each rating category, the yield spread between downgrade-vulnerable and non-downgrade-vulnerable issuers. The bottom left panel is the mean of this spread over the entire sample period. The bottom right panel is the model spread in the high IG demand case.

the investment-grade status in particular) for investors.

The dashed red line shows bond yields in an economy with a moderately higher demand for investment-grade bonds. As investors' demand increases, we observe two effects. First, the curve flattens as investors' demand throughout the IG market lowers the yield differential between high-quality and low-quality firms. Second, the curve becomes more convex within each rating bucket. This convexity is driven by lower yields of downgrade-vulnerable firms, namely firms located on the right of each rating category. These issuers benefit more from the leniency of credit rating agencies and are thus rewarded by lower bond yields. The leniency of credit rating agencies is stronger at the investment-grade rating cutoff, making the convexity for BBB-rated issuers more pronounced.

With sufficiently high demand for investment-grade bonds, the black dotted line, the flattening and the convexity can become so pronounced that yields of bonds of prospective

fallen angels can fall below that of non-downgrade-vulnerable BBB-rated issuers. The bottom panels compare the difference between the spread of downgrade-vulnerable firms and non-downgrade-vulnerable firms observed in the data in the full sample (left panel) and the one generated in our framework with a high demand for investment-grade bonds (right panel). Our framework generates the exorbitant privilege of prospective fallen angels.

The mechanism relies on two key frictions. First, credit rating agencies need to be somewhat reluctant to downgrade issuers, especially to the speculative-grade market. This leniency of credit rating agencies has been documented by [Bruno et al. \(2016\)](#), among others. Second, investors need to care about the investment-grade rating in their portfolio choice. A large empirical literature has discussed this friction, linking it to capital regulation and agency problems between investment managers and investors.¹⁵

The next three sections map the key elements in this framework to their empirical counterparts. [Section 6.2](#) documents the role of QE in driving investors' demand for IG downgrade-vulnerable corporate bonds, especially those issued by prospective fallen angels. [Section 6.3](#) documents that downgrade-vulnerable firms, and prospective fallen angels in particular, increase their bond financing to take on more risks, largely in the form of risky M&A. We document that this M&A critically exploits the leniency of credit rating agencies. [Section 6.4](#) shows that investors increase their demand for bonds issued by downgrade-vulnerable IG firms that announce M&A and that this dynamic is largely responsible for the exorbitant privilege of prospective fallen angels.

¹⁵There is an interesting parallel between such QE-induced capital misallocation and the zombie-lending related credit misallocation. In the latter, banks extend subsidized credit to distressed firms to gamble for resurrection and/or to not recognize them as non-performing assets (which would induce higher provisioning and capital requirements). In the former, each investor such as an insurance firm can be considered relatively atomistic; nevertheless, the sluggishness of credit rating downgrades can act as a coordinating mechanism whereby each such investor can search for yield to gamble over the “cliff” risk of IG to sub-IG downgrade. Materialization of the cliff risk may be associated with liquidation costs, in case of investors restricted to investing in IG, and/or higher capital requirements, in case of investors such as insurance companies.

6.2 QE-driven demand by investment-grade investors

In this section, we document that investors exposed to the Federal Reserve QE programs drive the demand for IG corporate bonds, especially those issued by prospective fallen angels. This dynamic is entirely driven by investors that predominantly hold IG bonds.

Exploiting our granular holdings data, we measure investors' exposure to QE and observe investors' holdings of investment-grade bonds. We measure investor-level exposure to QE merging our holdings-level data with the Federal Reserve SOMA holdings data. Investor time-varying exposure to QE is defined as the share of investor total holdings that are held by the Federal Reserve in the SOMA Treasury portfolio, where holdings are weighted by the share of amounts outstanding held by the Federal Reserve.¹⁶ The idea is that investors with a substantial share of their security holdings held by the Federal Reserve at time t are more affected by QE through its portfolio rebalancing channel (Gagnon et al., 2011). We classify an investor as an investment-grade investor if its mean holdings of investment-grade bonds in the entire sample period are at least 80% of its entire bond portfolio. We classify investors as non-investment grade if their holdings of investment-grade bonds are less than 60% of their portfolio.¹⁷

Figure 9 shows that high-exposure investors (above median QE exposure) increased their holdings of investment-grade corporate bonds compared with low-exposure (below median QE exposure) investors starting around 2014. This differential dynamic is particularly pronounced in the BBB market and, within the BBB market, for prospective fallen angels. The top panel compares holdings by high-exposure and low-exposure investors in the BBB market (top left panel) and A/AA/AAA market (top right panel). High-exposure investors

¹⁶Formally, we define the variable QE Exposure $_{kt}$ as follows:

$$\text{QE Exposure}_{kt} = \frac{\sum_b (\text{Holdings}_{bkt} \times \text{SOMA}_{bt})}{\sum_b \text{Holdings}_{bkt}} \quad (2)$$

where b is a security, k is an investor, and t is a date. SOMA_{it} is the share of Treasury security b held by the Federal Reserve at date t . Holdings_{bkt} are the holdings of security b held by investor k at time t . This variable is calculated at a quarterly frequency. Figure B.9 shows the time-series evolution of QE Exposure $_{kt}$.

¹⁷Our results are robust to different thresholds. With these somewhat arbitrary thresholds, we split the sample in three terciles with roughly the same number of observations.

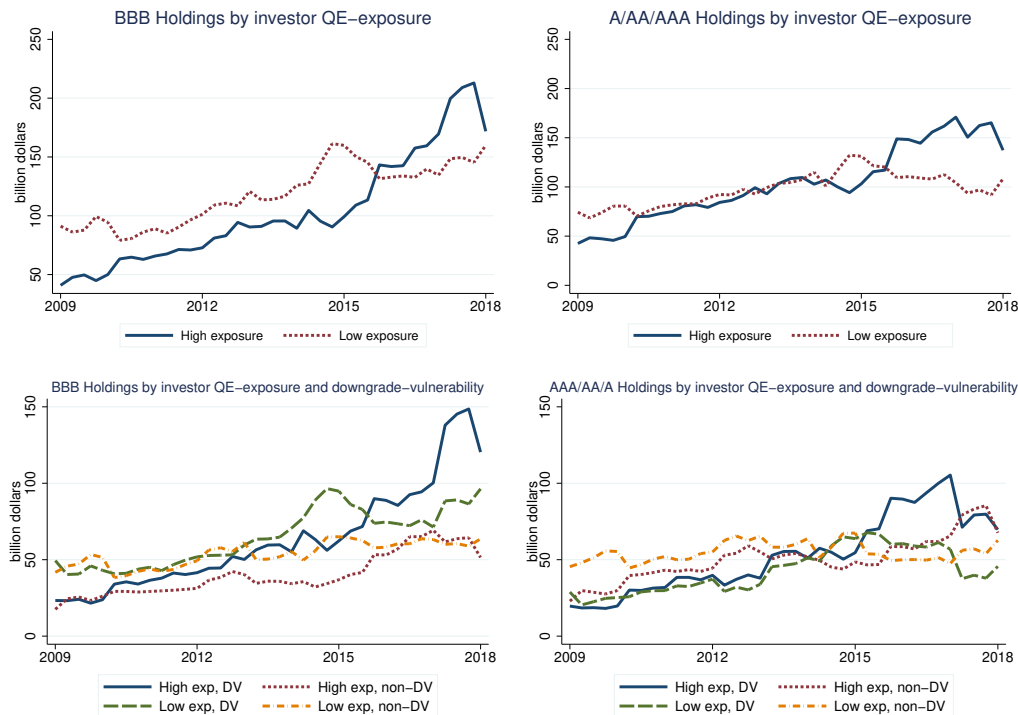


Figure 9: Investors’ holdings of IG corporate bonds. This figure shows investors’ holdings of investment grade corporate bonds, broken down by investor QE exposure, issuer rating, and downgrade-vulnerability. The top panels show holdings of bonds issued by BBB-rated issuers (top left panel) and A/AA/AAA-rated issuers (top right panel) by high-exposure (blue solid line) and low-exposure (red dotted line) investors. High-exposure investors have an above median exposure to QE. The bottom panels show holdings of bonds issued by BBB-rated issuers (bottom left panel, broken down by downgrade-vulnerability) and A/AA/AAA-rated issuers (bottom right panel, broken down by downgrade-vulnerability) by high-exposure and low-exposure investors.

substantially increase their holdings starting in 2014 in both markets but more so in the BBB market. The two bottom panel further split holdings depending on whether bonds are issued by downgrade-vulnerable or non-downgrade-vulnerable firms. The substantial increase in holdings by high-exposure investors is almost entirely driven by holdings of downgrade-vulnerable firms. Again, this dynamic is more pronounced in the BBB market.

Next, we analyze investors’ demand for bonds issued by prospective fallen angels by estimating the following specification:

$$Holdings_{ikt} = \beta_1 QE \text{ Exposure}_{kt} \times Vulnerable_{it} + \eta_{kt} + \mu_{it} + \epsilon_{kit} \quad (3)$$

where k is an investor, i is an issuer, and t is a quarter. The dependent variable is the log of (one plus) holdings by investor k in year t of bonds issued by issuer i . The independent

PANEL A		<i>Holdings_{ikt}</i>				
QE Exposure _{kt} × <i>Vulnerable_{it}</i>	1.461*** (0.371)	1.328*** (0.345)	1.371*** (0.373)	1.271*** (0.349)	1.365*** (0.448)	-0.044 (0.542)
<u>Fixed Effects</u>						
Issuer <i>i</i>	✓	✓				
Investor <i>k</i>	✓		✓			
Time <i>t</i>	✓					
Investor <i>k</i> - Time <i>t</i>		✓		✓	✓	✓
Issuer <i>i</i> - Time <i>t</i>			✓	✓	✓	✓
Sample investors	Full	Full	Full	Full	IG	non-IG
Observations	4,838,897	4,837,690	4,838,153	4,836,946	1,316,637	1,153,770
R-squared	0.505	0.556	0.524	0.575	0.605	0.547
PANEL B		<i>Holdings_{ikt}</i>				
QE Exposure _{kt} × <i>Vulnerable_{it}</i>	0.281 (0.946)	0.718* (0.428)	1.939*** (0.483)	-1.024** (0.482)	2.171*** (0.658)	-0.243 (0.979)
<u>Fixed Effects</u>						
Investor <i>k</i> - Time <i>t</i>	✓	✓	✓	✓	✓	✓
Issuer <i>i</i> - Time <i>t</i>	✓	✓	✓	✓	✓	✓
Sample investors	Full	Full	Full	Full	IG	non-IG
Sample issuers	AAA/AA	A	BBB	HY	BBB	BBB
Observations	287,950	1,020,557	1,744,170	1,001,739	549,619	220,531
R-squared	0.726	0.673	0.616	0.537	0.621	0.644

Table 4: Demand for bonds issued by prospective fallen angels. This table presents estimation results from specification (3). The unit of observation is investor *k*-issuer *i*-date *t*. The dependent variable is $\log(1 + Holdings_{kit})$, where *Holdings* are holdings by investor *k* in year *t* of corporate bonds issued by issuer *i* (thousands dollars). QE exposure_{kt} is defined in (2). *Vulnerable_{it}* is a dummy equal to 1 if issuer *i* is downgrade-vulnerable to a downgrade in date *t*. The uninteracted *Vulnerable_{it}* and QE exposure_{kt} terms are included in the estimation but not reported for brevity. In Panel A, the first four columns are estimated in the full sample of investors and the last two columns are estimated in the subsample of investors with holdings of investment grade bonds greater than 80% and smaller than 60%, respectively. In Panel B, the first four columns are estimated in the full sample of investors and in the subsample of issuers based on their rating and the last two columns are estimated in the subsample of BBB issuers for investment grade and non-investment grade investors respectively. Standard errors double clustered at the investor *k* level and issuer *j* level reported in parentheses. *** p<0.01, ** p<0.05, * p<0.1.

variable of interest is the interaction between QE Exposure_{kt} and *Vulnerable_{it}*, a dummy equal to one if issuer *i* is downgrade-vulnerable in year *t*.

The coefficient of interest β_1 captures whether investors more exposed to QE hold more or fewer bonds issued by downgrade-vulnerable issuers from 2009 to 2018 compared with investors less exposed to QE. In the most stringent specification, we are effectively comparing bonds, at time *t*, issued by the *same issuer* that are held by investors with a different QE exposure. In particular, we include investor-time and issuer-time fixed effects. Investor-time fixed effects control for the potential differential portfolio choice by high- vs. low-exposure investors, with

respect to downgrade-vulnerable and non-downgrade-vulnerable bonds, for reasons unrelated to the QE-induced portfolio rebalancing channel. Issuer-time fixed effects control for the potential differential characteristics of downgrade-vulnerable and non-downgrade-vulnerable bonds (e.g., issuance volume) that might interact with the portfolio choice of high- vs. low-exposure investors for reasons, again, unrelated to the portfolio rebalancing channel.

Table 4 shows the estimation results. In the top panel, the first four columns show the coefficients estimated in the full sample. The estimated coefficient β_1 is positive and significant, suggesting that more exposed investors have a higher demand for bonds issued by downgrade-vulnerable issuers compared with less exposed investors. In the last two columns, we estimate the specification in the subsample of investment-grade and non-investment grade investors, respectively. The estimation results show that the demand of high-exposure investors for bonds issued by downgrade-vulnerable firms is stronger among investment-grade investors. The bottom panel shows other sample splits. In the first four columns, the estimation is run in the subsample of AAA/AA, A, BBB, and speculative-grade (or high-yield) issuers. The results show that the overall effect is driven by BBB issuers. The last two columns show results for the subsample of BBB issuers for investment grade and non-investment grade investors, respectively. The results confirm that the effects in the BBB segment are driven by investment-grade investors.

6.3 Issuers’ risk-taking and M&A activity

We now analyze how issuers meet the demand for bonds discussed in the previous section. First, we show that downgrade-vulnerable issuers, and prospective fallen angels in particular, supply bonds largely to finance M&A activity. Second, we show that these M&A deals allow downgrade-vulnerable issuers, and prospective fallen angels in particular, to increase their market share and prolong their ratings inflation—at the cost of increased fragility.

Figure 10 shows the substantial increase in investment-grade bond issuance since 2013–15, in large part to fund M&A activity. The figure shows the annual number of bond issues (left) and the offering amount (right) from 2009 to 2019, separately for A/AA/AAA-rated, BBB-rated, and speculative-grade (or high-yield) issuers. Both bond issues and offering

amounts markedly increase in the investment-grade segment around 2013–15.¹⁸ We do not observe a similar increase in the speculative-grade market. The figure further distinguishes between issuance in the years a firm has at least one M&A deal (dark color) and other issuance (light color); the issuance in M&A years appears to be playing a more important role in the IG market than in the speculative-grade market, especially since 2013–15.

Figure 11 shows that downgrade-vulnerable firms, and prospective fallen angels in particular, drive the increase in M&A activity since 2014 in the IG market. This is not the case in the speculative-grade market, as shown in Figure B.10. The top four figures focus on BBB-rated firms (first row) and A/AA/AAA-rated firms (second row). The left and right panels focus on downgrade-vulnerable and non-downgrade-vulnerable firms, respectively. M&A deal volume increases substantially in 2014 for downgrade-vulnerable firms while stays roughly constant for non-downgrade-vulnerable firms. The two bottom figures plot the ratio of downgrade-vulnerable over non-downgrade-vulnerable M&A deal volume, confirming that the increase in M&A deal volume is more pronounced for prospective fallen angels.

Having documented the increase in issuance to fund M&A and the increased M&A activity

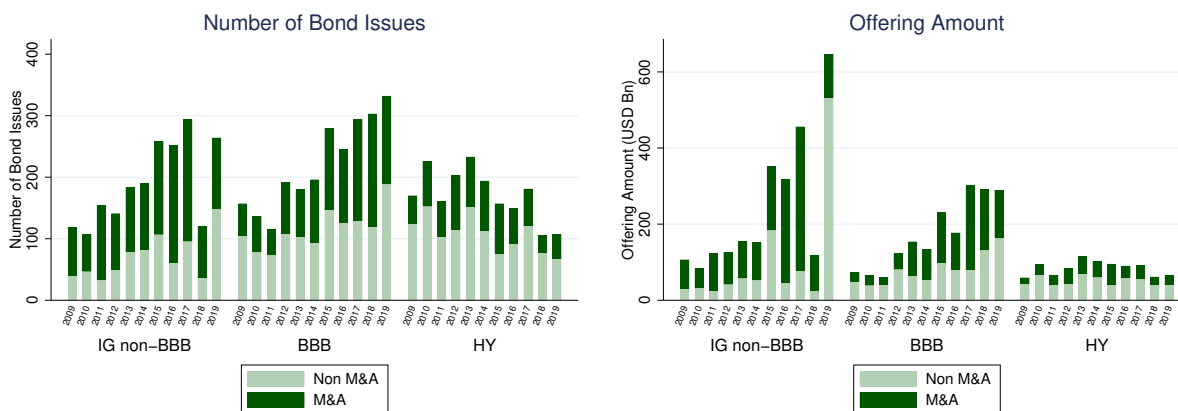


Figure 10: Bond issuance and volume. This figure shows the number of bond issues and the bond issuance volume for high-yield, BBB-rated, and A/AA/AAA-rated firms from 2009 to 2019. The left panel shows the total number of bond issues, separated by M&A and non-M&A bond issues. The right panel shows the total offering amount, separated by M&A and non-M&A bond issues. A bond issue is considered to be M&A-related if a firm issues a bond in the year it does at least one M&A deal.

¹⁸The spikes in the offering amount in 2015–17 and 2019 are explained by a few large issuances by Procter and Gamble (2015), Intl. Business Machines (2016), Walmart (2017), and Berkshire Hathaway (2019).

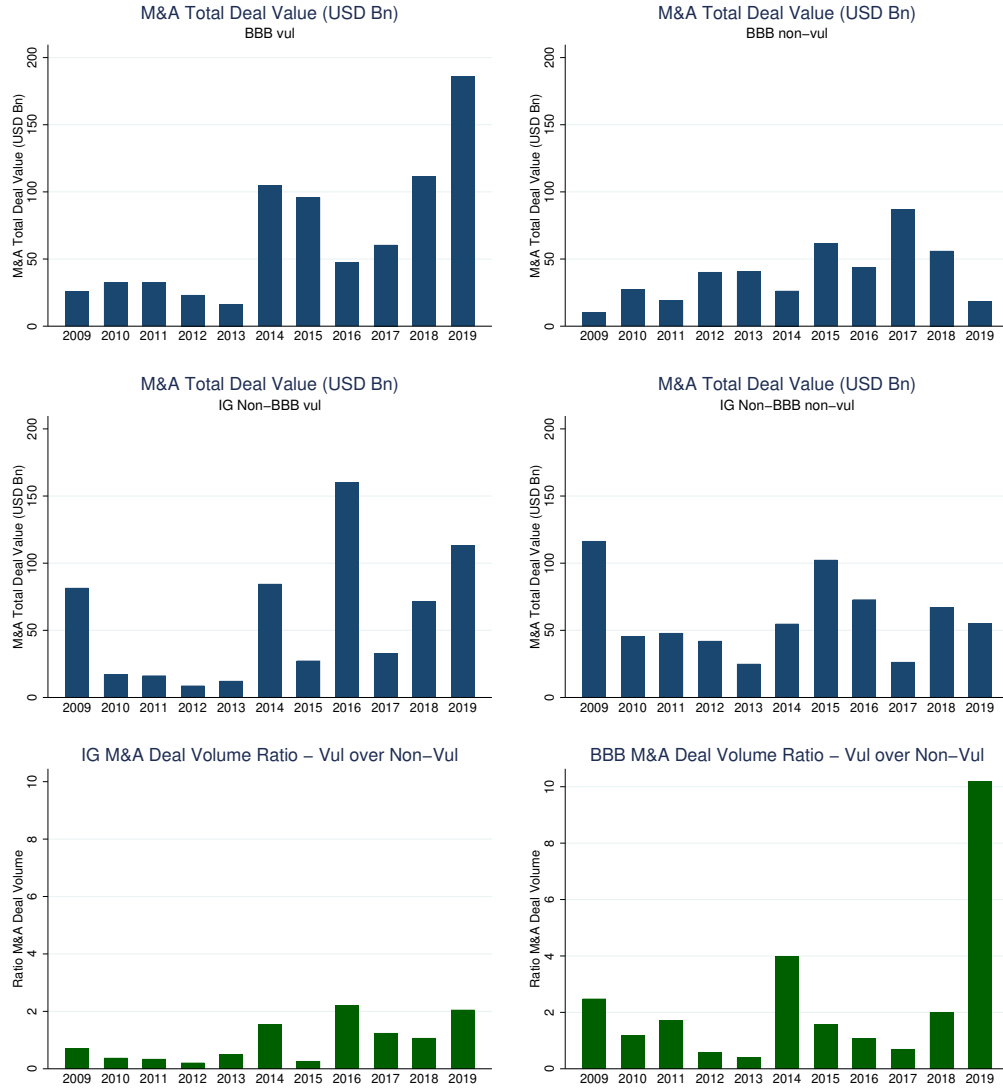


Figure 11: M&A activity. This figure shows the M&A activity by downgrade-vulnerable and non-downgrade-vulnerable investment grade issuers. The first row shows deal volume for downgrade-vulnerable (left) and non-downgrade-vulnerable (right) BBB-rated firms. The second row shows deal volume for downgrade-vulnerable (left) and non-downgrade-vulnerable (right) A/AA/AAA-rated firms. The third row shows the ratio of the total M&A deal volume of downgrade-vulnerable firms over the total M&A deal volume of non-downgrade-vulnerable firm in the AAA/AA/A (left) and BBB (right) rating categories. [Figure B.10](#) presents the same charts for firms rated speculative-grade.

by downgrade-vulnerable firms, we now show that downgrade-vulnerable firms, and especially prospective fallen angels, use M&A to prolong rating inflation and increase their risk-taking.

M&A prolongs rating inflation Downgrade-vulnerable issuers engage in M&A to prolong their rating inflation. The announcement of an acquisition is almost always accompanied by rosy forecasts of synergies that will reduce costs and increase revenues and, even more importantly, a leverage-reduction plan. This plan is a promise to reduce the debt taken on to finance the acquisition in an, often successful, attempt to convince credit rating agencies about the issuer future prospects. [Figure B.11](#) shows that this promise is often broken.

This evidence is consistent with substantial anecdotal evidence from market participants. For example, [Morgan Stanley \(2018a\)](#) states that “...M&A has driven big increases in leverage and BBB debt outstanding. And while these companies may pledge to delever over time, those promises often don’t materialize...” And, again, [Morgan Stanley \(2018b\)](#) writes that “...forward-looking assumptions often assume all goes well and earnings growth is strong. In reality, issuers have been slow to actually delever...”

We now formally document evidence of ratings inflation in the BBB market and show that this inflation is largely driven by M&A activity. Formally, we estimate the following specification in the subsample of downgrade-vulnerable firms:

$$Y_{it} = \beta_1 M\&A_{it} \times BBB_{it} + \beta_2 BBB_{it} + \beta_3 M\&A_{it} + \delta X_{it} + \eta_{ht} + \epsilon_{it} \quad (4)$$

where i is a firm and t is year. The dependent variable Y_{it} is ratings inflation, defined as the number of notches between the issuer’s credit rating notch and the credit rating notch implied by its Z -score. The independent variable of interest is the interaction between BBB_{it} and $M\&A_{it}$, where $M\&A_{it}$ is a dummy equal to one in the year firm i has conducted an M&A deal and for the years thereafter. BBB_{it} is a dummy equal to one if firm i has a BBB rating in t . X_{it} represents a set of firm controls (log assets, leverage, and net worth) and η_{ht} are industry-year fixed effects.

[Table 5](#) shows the estimation results. The first column suggests that prospective fallen angels enjoy an additional 0.4 notches in ratings inflation compared with downgrade-vulnerable

	Rating inflation	Rating inflation	Downgrade probability	Time to downgrade	Upgrade probability	Up/Downgrade intensity (Δ notch)
BBB _{it}	0.380** (0.188)	0.016 (0.288)	-0.069** (0.032)	-0.677*** (0.244)	-0.026 (0.019)	0.003 (0.082)
M&A _{it} × BBB _{it}		0.566* (0.302)	-0.082** (0.038)	-0.176 (0.290)	0.070** (0.033)	-0.250*** (0.093)
M&A _{it}		-0.318 (0.199)	0.043* (0.024)	0.533* (0.270)	-0.036* (0.019)	0.104* (0.059)
Industry-Year FE	✓	✓	✓	✓	✓	✓
Controls	✓	✓	✓	✓	✓	✓
Sample	Vulnerable Entire	Vulnerable Entire	Vulnerable Rating changes	Vulnerable Downgrades	Vulnerable Rating changes	Vulnerable Rating changes
Observations	2,750	2,750	255	143	255	255
R-squared	0.381	0.386	0.616	0.723	0.505	0.543

Table 5: The role of M&A in prolonging ratings inflation. This table presents firm-level regressions for vulnerable firms. In the left-hand panel, we focus on the entire sample. The dependent variable is rating inflation - calculated as the number of notches between the issuer’s credit rating notch (e.g., AA+, AA, AA-, A) and the credit rating notch implied by its Z”-score. M&A is a dummy variable equal to one for the year and the years after a firm has conducted M&A. In the right-hand panel, we restrict our sample to all firm-years with rating changes (or downgrades). In these regressions M&A takes the value of one if - between rating changes - a firm has done an M&A deal while being vulnerable. The dependent variables include i) downgrade probability, which is a dummy variable equal to one in case of a downgrade by at least one rating category, ii) time to downgrade, which measures the time between the first time a firm is considered to be vulnerable after a rating change, up until the next rating change, iii) upgrade probability, which is a dummy variable equal to one in case of an upgrade by at least one rating category, and iv) downgrade intensity which measures the number of notches a firm is up- or downgraded. A positive number refers to a downgrade, and a negative number to an upgrade. The dependent variables are weighted by the total debt outstanding in a rating category in a given year. All specifications include industry-year fixed effects and firm-level controls (including log(total assets), leverage, net worth and tangibility (ppent / assets)). Standard errors are clustered at the firm level. *** p<0.01, ** p<0.05, * p<0.1.

issuers in other rating groups. The second column shows that, within downgrade-vulnerable firms, ratings inflation is largely driven by firms that have undertaken an M&A. This M&A ratings inflation is, however, only enjoyed by prospective fallen angels.

The last four columns further confirm the interplay between M&A and the leniency of credit rating agencies. For this analysis, we track a firm from the first moment it is considered to be downgrade-vulnerable within a rating, until the year it is either upgraded or downgraded. This window is referred to as the downgrade-vulnerability window, and runs from $t_0 = 0$ until $t_h = h$, where h is the length of the window. We drop firms that never enter the downgrade-vulnerability status or that never encounter a rating change.

We mark the downgrade-vulnerability window to be “M&A related” if a firm has conducted at least one M&A transaction while being downgrade-vulnerable within the (t_0, t_h) interval. We furthermore construct (i) a variable that denotes the t_0 rating, (ii) a variable that denotes the years it took the firm to be upgraded/downgraded (equal to h), (iii) an indicator variable

equal to one if a firm is downgraded at time h , (iv) an indicator variable equal to one if a firm is upgraded at time h , and (v) a variable that denotes the downgrade severity, measured by the number of notches a firm is being downgraded at time h .

We then collapse the downgrade-vulnerability window to the year in which the rating change occurs, and are thus effectively left with the cross-section of rating changes j of firm i . This subsample allows us to study the rating dynamics of BBB M&A firms relative to non-M&A firms. Specifically, we estimate the following specification:

$$Y_{ij} = \beta_1 M\&A_{ij} \times BBB_{ij} + \beta_2 BBB_{ij} + \beta_3 M\&A_{ij} + \delta X_{ij} + \eta_{ij} + \epsilon_{ij} \quad (5)$$

where i is a firm and j is the rating change. The dependent variable Y_{ij} denotes a set of variables: i) the upgrade/downgrade probability, which is a dummy variable equal to one in case of a upgrade/downgrade at time h , ii) the upgrade/downgrade intensity measured by the notches upgraded/downgraded at time h , and iii) the time to downgrade which is equal to h . $M\&A_{ij}$ is a dummy equal to one when a firm has done an M&A deal within the (t_0, t_h) interval. BBB_{ij} is a dummy equal to one if firm i has a BBB rating at time t_0 . X_{ij} represents a set of firm controls (log of total assets, leverage and tangibility) at time h and η_{ij} are industry-year fixed effects at time h .

The third column shows that, while downgrade-vulnerable firms that undertake M&A have a higher probability of being downgraded, prospective fallen angels that undertake M&A have a *lower* probability of being downgraded, consistent with a leniency of credit rating agencies. In the fourth column, we further restrict the sample to include only downgrades. We find that, conditional on being downgraded, M&A extends the time-to-downgrade in all rating categories.

The inherent riskiness of M&A might be, ex-post, good news for the downgrade-vulnerable firm. The last two columns of the table likely capture these cases. The fifth column shows that, for prospective fallen angels, M&A provides an upside potential, estimated as an increased upgrade probability. This upside potential is confirmed in the last column, where the negative coefficient of the interaction term captures a higher upgrade intensity relative to other M&A firms. However, in the remainder of this section, we show that M&A causes a

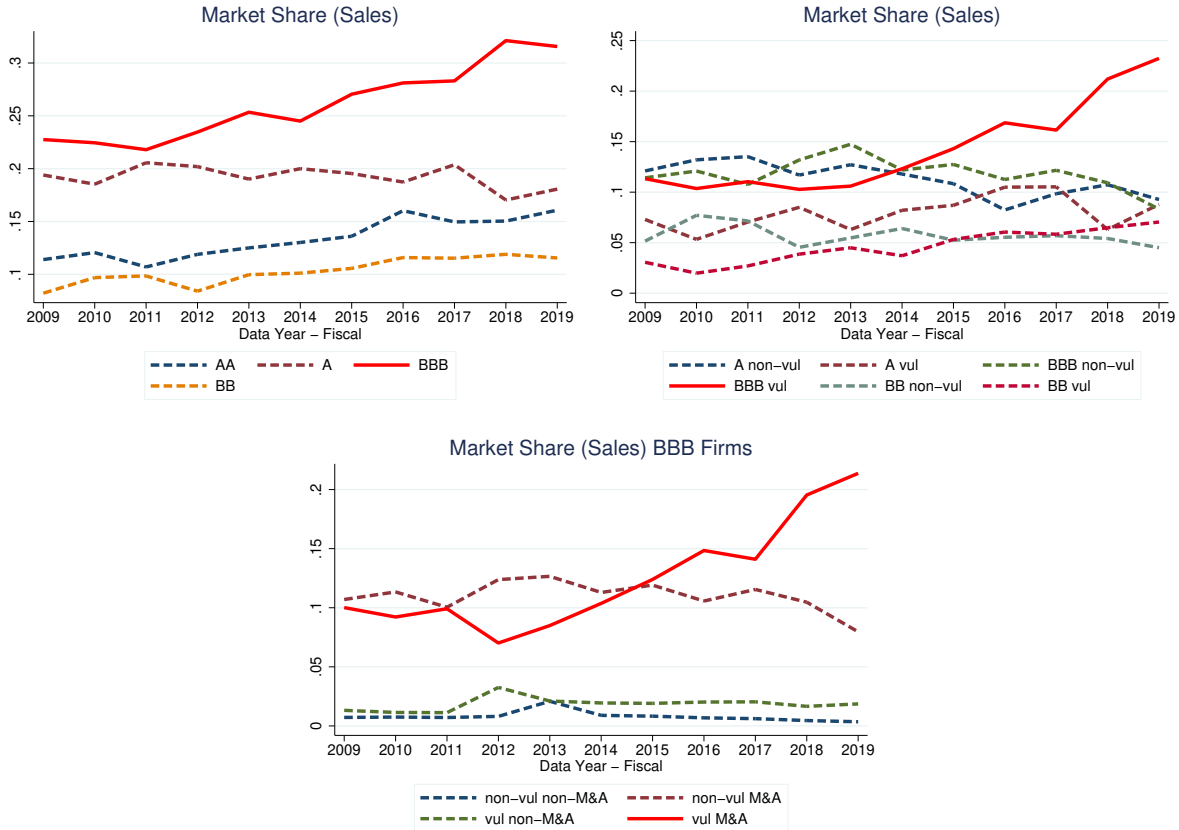


Figure 12: The increase in market share of prospective fallen angels. This figure shows the evolution of firm market share (share of sales). The top left panel includes all firms in Compustat, grouped by credit rating from AA to BB. The top right panel distinguishes between downgrade-vulnerable and non-downgrade-vulnerable firm within each rating. The bottom panel only includes BBB-rated issuers, broken down by downgrade-vulnerability and M&A activity.

buildup in vulnerability, which materialized at the onset of the COVID-19 pandemic.

M&A as risk-taking Downgrade-vulnerable issuers engage in M&A to engage in risk-taking while being somewhat protected, as discussed above, from credit ratings downgrades. We now show that M&A allows downgrade-vulnerable firms, and prospective fallen angels in particular, to substantially increase their market share at the cost of increased fragility. This fragility materialized at the onset of the COVID-19 shock, leading to an unprecedented wave of fallen angels, almost entirely among those firms that engaged in M&A.

Figure 12 shows the substantial increase in market shares by prospective fallen angels. The top left panel shows the evolution of markets shares by issuer rating, highlighting the rapid increase in BBB-rated issuers' market share starting from around 2014. The top right panel further breaks down each rating category into the downgrade-vulnerable and

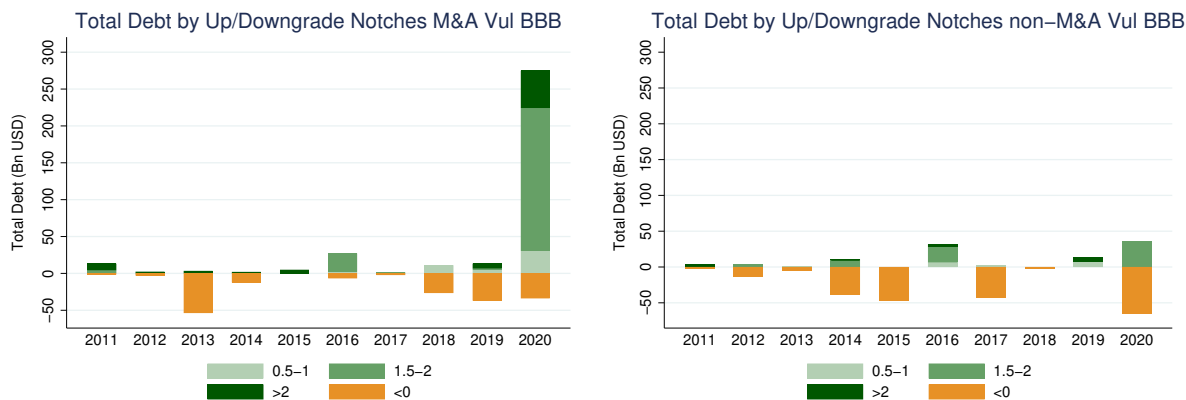


Figure 13: Downgrade materialization of (prospective) fallen angels. This figure shows the total debt of vulnerable BBB-rated firms that has been upgraded and downgraded in the years 2011 to 2020. The downgraded debt is grouped according to their downgrade severity. The downgrade severity is measured by the number of notches a firm is being downgraded, and is subdivided into three broad categories: 0.5-1, 1.5-2, >2 notches, as reflected by the green shades. The upgraded debt is shown by the orange bars, and is represented by the notches below zero. The left-hand panel plots the total amount of up/downgraded debt for vulnerable BBB firms that have conducted an M&A since the year that they have become vulnerable. The right-hand panel shows the total amount of up/downgraded debt for firms that have not conducted an M&A since the year that they have become vulnerable.

non-downgrade-vulnerable groups. The entire increase in BBB-rated issuers’ market share is driven by prospective fallen angels. The bottom panel only focuses on BBB-rated issuers and highlights that the increase in market share of BBB-rated firms from 2014 to 2019 has been driven by prospective fallen angels engaging in M&A.

The increased fragility of prospective fallen angels engaging in M&A materialized in March 2020, at the onset of the COVID-19 pandemic. Figure 13 shows that the yearly debt volume that has been downgraded (upgraded) from downgrade-vulnerable BBB firms to the next lower (higher) rating category. The two panels separate the debt volumes for the firms that engaged in M&A (left panel) and firms that did not engage in M&A (right panel). The green bar in Figure 13 shows that the debt downgraded from BBB to speculative-grade in 2020 was almost entirely driven by firms that engaged in M&A. The different shades indicate the severity of the downgrade (number of notches). The much larger amount of downgraded debt and the number of rating notch downgrade of prospective fallen angels compared to their

	Downgrade probability	Upgrade probability	Up/Downgrade intensity (Δ notch)	Time to downgrade
M&A _{ij} × BBB _{ij} × 2020 _{ij}	0.233*** (0.068)	-0.051 (0.050)	0.441** (0.170)	1.034* (0.566)
M&A _{ij} × 2020 _{ij}	-0.065* (0.037)	0.006 (0.032)	-0.022 (0.125)	-0.965** (0.437)
M&A _{ij} × BBB _{ij}	-0.124*** (0.046)	0.090** (0.043)	-0.328*** (0.115)	-0.459 (0.408)
BBB _{ij} × 2020 _{ij}	-0.130** (0.052)	-0.023 (0.032)	-0.273** (0.123)	-0.512 (0.435)
BBB _{ij}	-0.056* (0.032)	-0.025 (0.020)	0.023 (0.082)	-0.579** (0.245)
M&A _{ij}	0.055** (0.028)	-0.038* (0.023)	0.109 (0.068)	0.772** (0.357)
Industry-Year FE	✓	✓	✓	✓
Controls	✓	✓	✓	✓
Sample	Vulnerable firms Rating changes	Vulnerable firms Rating changes	Vulnerable firms Rating changes	Vulnerable firms Downgrades
Observations	255	255	255	143
R-squared	0.625	0.512	0.550	0.736

Table 6: Downgrades and upgrades following M&A. This table presents estimation results from the augmented specification (5). The dependent variables are downgrade probability, upgrade probability, time to downgrade and downgrade intensity, weighted by the total debt amount in a rating category in a given year. Downgrade / upgrade probability are dummy variables which take the value of one in case of a downgrade / upgrade. Downgrade / upgrade intensity measures the number of notches a firm is downgraded / upgraded, if downgraded / upgraded by at least one rating category. Time to downgrade measures the time it took a firm to downgrade after obtaining the vulnerability status. Control variables include the log of total assets, leverage and tangibility (ppent / assets). For columns (1), (2), and (3), the sample consists of vulnerable firms that have experienced a rating change. Column (4) focuses on vulnerable firms that have been downgraded. Standard errors are clustered at the firm-level and reported in parentheses. *** $p < 0.01$, ** $p < 0.05$, * $p < 0.1$.

non-downgrade-vulnerable peers in 2020 is remarkable.¹⁹ In [Appendix B.12](#), we complement this ex-post evidence with ex-ante evidence where we show that prospective fallen angels (i) engage in relatively larger M&A transactions compared to other rated firms, (ii) substantially increase their total debt without a comparable increase in profitability post-M&A, and (iii) experience negative cumulative abnormal returns around the M&A announcement date (not the case for non-downgrade-vulnerable BBB-rated issuers).

[Table 6](#) confirms that the COVID-19 shock particularly affected prospective fallen angels that engaged in M&A. We augment specification (5) to include a triple interaction with a time

¹⁹[Figure B.12](#) shows a somewhat similar pattern when looking at the number of issuers downgraded, not weighted by debt volume.

dummy equal to one in 2020. In the first column, the sum of the coefficients of $M\&A$ and $M\&A \times 2020$ shows that M&As do not in general affect the probability of being downgraded in 2020. However, the incremental effect of $M\&A \times BBB$ and $M\&A \times BBB \times 2020$ shows that this is not the case for the BBB rating. Rather, the results show that the downgrade risk of prospective fallen angels in 2020 is *larger* and materializes in an economic downturn. Importantly, the second column shows that the COVID-19 pandemic did not affect the upgrade probability of prospective fallen angels in 2020.

In the third column, we replace the probability of upgrades and downgrades by their intensity, measured by the number of notches a firm is upgraded or downgraded. A positive number refers to a downgrade, and a negative number to an upgrade. The sum of the coefficients $M\&A \times BBB$ and $M\&A$ shows that, in the years prior to the COVID-shock, prospective fallen angels that conducted M&A deals have a greater upgrade intensity, echoing the results of [Table 5](#). However, once the COVID-shock hits the economy, the pattern reverses. In 2020, prospective fallen angels have not only been downgraded more often, but have also been downgraded by more notches.

Finally, we provide suggestive evidence linking the downgrades of prospective fallen angels in 2020 to the leniency of credit rating agencies. Specifically, we examine the time-to-downgrade for downgrade-vulnerable firms in 2020. In the last column, we observe that it took longer to be downgraded for prospective fallen angels that did an M&A deal. These results suggest that the BBB-rated firms that fell to the speculative-grade market in 2020 might have benefited from the leniency of credit rating agencies during the pre-pandemic years. However, once the COVID-19 shock hit the economy, we observed a massive amount of debt being downgraded to the speculative-grade market, as shown in [Figure 13](#).

6.4 Investors' appetite for M&A-active issuers

In this section, we analyze investors' appetite for bonds issued by firms engaging in M&A activity, mainly focusing on prospective fallen angels. First, we revisit our investor demand analysis and show that M&A drives the demand for bonds of downgrade-vulnerable IG issuers, and prospective fallen angels in particular. Second, we revisit our bond pricing analysis and show that the bond financing privilege of prospective fallen angels is largely driven by M&A.

Investor demand for bonds issued by M&A-active firms We analyze the role of M&A in investor demand for bonds issued by prospective fallen angels by estimating a model similar to specification (3), where we also include interactions with M&A announcements:

$$\begin{aligned}
Holdings_{ikt} = & \beta_1 QE Exposure_{kt} \times Vulnerable_{it} \times M\&A_{it} \\
& + \beta_2 QE Exposure_{kt} \times Vulnerable_{it} \\
& + \beta_3 QE Exposure_{kt} \times M\&A_{it} + \eta_{kt} + \mu_{it} + \epsilon_{kit}
\end{aligned} \tag{6}$$

where the dependent variable is the log of (one plus) the holdings by investor k of bonds issued by issuer i in quarter t . The independent variable of interest is the triple interaction between investor QE Exposure $_{kt}$, firm downgrade vulnerability, $Vulnerable_{it}$, and $M\&A_{it}$, a dummy equal to one in the year when issuer i announces at least one M&A deal.

Table 7 shows the estimation results. M&As drive investor demand for bonds of downgrade-vulnerable investment grade issuers. In Panel A, the first column presents estimates of specification (6) in the subset of IG investors. The positive and significant coefficient on the triple interaction term confirms that QE-exposed IG investors increase their holdings of bonds issued by downgrade-vulnerable firms when the issuer announces an M&A deal. The second column shows that a similar demand effect is not present among non-IG investors. The remaining columns show that the triple interaction term is only significant in the subsample of investment grade investors and issuers.

Panel B shows the estimation results in more granular subsamples of issuer ratings. On the one hand, the positive and significant triple interaction terms in the first and third columns indicate that both prospective fallen angels as well as higher rated downgrade-vulnerable firms experience higher demand from QE-exposed investment grade investors if the firm announces an M&A. On the other hand, the second and fourth columns show that non-IG investors do not increase their demand if the firm announces an M&A. Similarly, the triple interaction term is not significant within the subsample of BB-rated issuers, irrespective of the issuer type.

Issuer M&A activity and bond spreads Consistent with the increase in investor demand for bonds issued by prospective fallen angels that undertake M&A, we show that the

PANEL A		<i>Holdings_{ikt}</i>					
QE Exposure _{kt} × Vulnerable _{it} × M&A _{it}	1.386***	-0.322	1.448***	0.785	1.672	-1.029	
	(0.467)	(0.718)	(0.500)	(1.190)	(4.647)	(0.894)	
QE Exposure _{kt} × Vulnerable _{it}	0.641	0.042	0.733	-0.519	-4.354*	-0.592	
	(0.453)	(0.527)	(0.483)	(0.942)	(2.351)	(0.532)	
QE Exposure _{kt} × M&A _{it}	0.093	0.520	0.038	0.671	-1.185	-0.014	
	(0.333)	(0.498)	(0.358)	(0.960)	(2.589)	(0.557)	
Investor × time FE	✓	✓	✓	✓	✓	✓	
Issuer × time FE	✓	✓	✓	✓	✓	✓	
Sample investors	IG	non-IG	IG	non-IG	IG	non-IG	
Sample issuers	Full	Full	IG	IG	HY	HY	
Observations	1,316,637	1,153,770	1,131,525	318,344	25,109	661,981	
R-squared	0.605	0.547	0.607	0.656	0.742	0.522	

PANEL B		<i>Holdings_{ikt}</i>					
QE Exposure _{kt} × Vulnerable _{it} × M&A _{it}	1.428**	-0.003	1.350*	-0.076	0.572	-0.672	
	(0.682)	(1.868)	(0.729)	(1.393)	(5.326)	(1.000)	
QE Exposure _{kt} × Vulnerable _{it}	0.495	-0.505	1.603**	-0.182	-4.332	-1.136	
	(0.657)	(1.474)	(0.660)	(1.130)	(2.722)	(0.747)	
QE Exposure _{kt} × M&A _{it}	-0.048	-1.167	-0.463	2.060*	-0.258	-0.219	
	(0.439)	(1.119)	(0.568)	(1.159)	(2.761)	(0.645)	
Investor × time FE	✓	✓	✓	✓	✓	✓	
Issuer × time FE	✓	✓	✓	✓	✓	✓	
Sample investors	IG	non-IG	IG	non-IG	IG	non-IG	
Sample issuers	AAA/AA/A	AAA/AA/A	BBB	BBB	BB	BB	
Observations	577,719	95,130	549,619	220,531	20,008	412,867	
R-squared	0.641	0.738	0.621	0.644	0.744	0.543	

Table 7: M&A related demand for bonds issued by prospective fallen angels. This table presents estimation results from specification (6). The unit of observation is investor k -issuer i -date t . The dependent variable is $\log(1 + Holdings_{kit})$, where $Holdings$ are holdings by investor k in year t of corporate bonds issued by issuer i (thousands dollars). QE exposure_{kt} is defined in (2). $Vulnerable_{it}$ is a dummy equal to 1 if issuer i is downgrade-vulnerable to a downgrade in date t . In panels A and B, the first, third and fifth columns are estimated in the sample of investors with holdings of investment grade bonds greater than 80%, while the others columns are estimated in sample of investors with holdings of investment grade bonds smaller than 60%. In panel A the first two columns are estimated on the full sample of issuers, middle two columns in the sample of investment grade issuers and the final two columns in the sample of sub-investment grade issuers. In panel B the first two columns are estimated in the sample of issuers with AAA, AA, or A ratings, the middle two with BBB ratings and the final two with BB ratings. Standard errors double clustered at the investor k level and issuer i level reported in parentheses. *** $p < 0.01$, ** $p < 0.05$, * $p < 0.1$.

	$\Delta_{12}Spread_{bit}$	$\Delta_{12}Spread_{bit}$
Vulnerable $_{it-11}$ \times AAA-AA $_{it-11}$	-2.567 (2.251)	5.118*** (0.913)
Vulnerable $_{it-11}$ \times A $_{it-11}$	0.376 (1.205)	0.538 (2.211)
Vulnerable $_{it-11}$ \times BBB $_{it-11}$	0.990 (1.263)	-1.854 (1.649)
Vulnerable $_{it-11}$ \times BB $_{it-11}$	-0.634 (5.590)	0.358 (6.324)
Vulnerable $_{it-11}$ \times B $_{it-11}$	20.598 (16.106)	13.853 (14.241)
M&A $_{it-11}$ \times Vulnerable $_{it-11}$ \times AAA-AA $_{it-11}$	8.188*** (1.678)	1.847 (1.743)
M&A $_{it-11}$ \times Vulnerable $_{it-11}$ \times A $_{it-11}$	0.147 (1.682)	0.709 (2.385)
M&A $_{it-11}$ \times Vulnerable $_{it-11}$ \times BBB $_{it-11}$	-4.525** (2.255)	-6.955** (2.962)
M&A $_{it-11}$ \times Vulnerable $_{it-11}$ \times BB $_{it-11}$	29.615* (16.845)	30.236 (19.937)
M&A $_{it-11}$ \times Vulnerable $_{it-11}$ \times B $_{it-11}$	44.585 (43.006)	79.343 (54.312)
Rating \times industry \times year-month FE	✓	✓
Rating \times M&A controls	✓	✓
Sample period	Entire	2013–16
Observations	70,329	35,634
R-squared	0.720	0.715

Table 8: Prospective fallen angels subsidy and M&A activity. This table presents estimation results from specification (7). The dependent variable is the change in the spread of bond b issued by firm i between month $t - 12$ and t . Vulnerable is a dummy equal to 1 if firm i is vulnerable to a downgrade at date t and zero otherwise. M&A is a dummy variable equal to one if issuer i announces an M&A acquisition in month t and zero otherwise. The interactions between the M&A dummy and issuer ratings are included in the estimation but not reported for brevity. Similarly, bond level controls for the remaining maturity, bid-ask spreads and dummy variables for callable bonds, convertible bonds and senior bonds are included in the estimation but not reported for brevity. Standard errors clustered at the firm i level and reported in parentheses. *** $p < 0.01$, ** $p < 0.05$, * $p < 0.1$.

spread on bonds issued by these firms decline around M&A announcements. To do so, we modify specification (1) to examine the change in bond spreads around M&A announcements by estimating the following specification which includes interactions with an M&A variable:

$$\begin{aligned} \Delta_{12}Spread_{bit} = & \beta_1 M\&A_{it-11} \times Vulnerable_{it-11} \times \mathbf{Rating}_{it-11} \\ & + \beta_2 Vulnerable_{it-11} \times \mathbf{Rating}_{it-11} \\ & + \beta_3 M\&A_{it-11} \times \mathbf{Rating}_{it-11} + \delta \mathbf{X}_{bt-11} + \nu_{rjt} + \epsilon_{bit} \end{aligned} \quad (7)$$

where $\Delta_{12}Spread_{bit}$ is the change in the secondary market spread on bond b issued by firm i between month $t - 12$ and t , $M\&A_{it}$ is an indicator variable equal to one if issuer i announces an M&A deal in month t , and \mathbf{Rating}_{it} is a vector of dummy variables corresponding to the credit rating of firm i in month t . We also include the same bond-level controls as in specification (1) \mathbf{X}_{bt} and rating-industry-year-month fixed effects ν_{rjt} .

Table 8 shows the estimation results. The significant triple interaction terms of $M\&A \times Vulnerable \times BBB$ confirm that secondary market spreads on bonds issued by prospective fallen angels decline around M&A announcements relative to bonds issued by prospective fallen angels that did not announce an M&A. The second column shows that the privilege was larger during the period of large QE purchases. Consistent with the privilege being only present for prospective fallen angels, downgrade-vulnerable firms in other ratings segments do not experience a decline in spreads after M&A announcements.

7 The cost of the subsidy

In this section, we discuss the cost of the subsidy enjoyed by prospective fallen angels. Section 7.1 quantifies the borrowing cost subsidy. Section 7.2 documents the cost imposed by prospective fallen angels on competing firms which do not benefit from subsidized financing.

7.1 Quantifying the subsidy for prospective fallen angels

In the Introduction, we claimed that prospective fallen angels benefited from a \$307 billion subsidy from 2009 to 2019. In this section, we explain this calculation and present additional

evidence supporting this aggregate magnitude.

The subsidy enjoyed by prospective fallen angels has two components. First, a “mispricing” component originating from the fact that prospective fallen angels pay lower bond financing costs than non-downgrade-vulnerable BBB-rated firms. Second, a “downgrade-avoidance” component originating from the fact that prospective fallen angels, by not being downgraded, avoid paying the much higher financing costs of speculative-grade issuers. This second component is also enjoyed by downgrade-vulnerable firms in other rating buckets as our definition of downgrade-vulnerable firms mechanically implies that these firms should be downgraded, according to their Z -score, to the next lowest rating bucket.

The right panel of [Figure 2](#) shows the mispricing subsidy (grey bar) and the downgrade-avoidance subsidy (green bar) for ratings ranging from AAA-AA to BB. In addition to the mispricing subsidy, prospective fallen angels also benefit from a large downgrade-avoidance subsidy driven by the sizable yield differential between the investment-grade market and the speculative-grade market. The calculations of the two subsidy components are as follows. The mispricing component is the bond spread between non-downgrade-vulnerable and downgrade-vulnerable firms, multiplied by the average maturity and the total offering amount of the bonds in the downgrade-vulnerable rating category over the years 2009–19. The downgrade-avoidance component is, for each rating, the difference between the mean offering spread of downgrade-vulnerable and non-downgrade-vulnerable firms in the next lowest rating category, then multiplied by the average bond maturity and the total offering amount of the bonds in the downgrade-vulnerable rating category over the years 2009–19.

[Figure 14](#) complements this exercise with a more rigorous calculation of the “downgrade-avoidance” subsidy. Specifically, we match each bond of a downgrade-vulnerable firm to bonds of firms in the next lowest rating category, within the same industry-year. We then choose the closest match, based on the firm Z -score, the bond maturity, and the bond offering amount. We rank the matches using the Mahalanobis norm, which measures the distance between the firm and bond characteristics accounting for the variance of individual characteristics and the covariances between characteristics, as is standard in literature (e.g., [Chernenko and Sunderam \(2012\)](#)). To safeguard the accuracy of our procedure, we restrict our sample to the matched bonds that have a score lower than 0.2, as this threshold leads

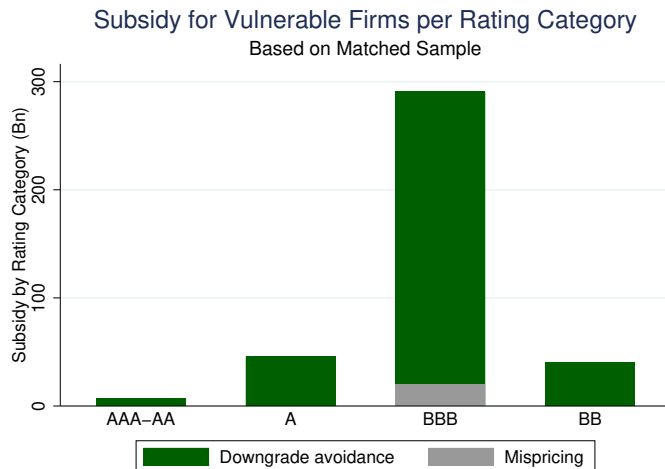


Figure 14: Bond market subsidy, robustness. This figure shows the bond market subsidy enjoyed by firms rated AAA-AA, A, BBB, and BB. The green bars denote the downgrade-avoidance subsidy, calculated as, for each rating, the mean difference between the offering spread of downgrade-vulnerable firms and matched firms in the next lowest rating category in a given year, then multiplied by the average bond maturity and the total offering amount of the bonds in the downgrade-vulnerable rating category in a given year, summed over the years 2009–19. The grey bar denotes the mispricing subsidy for BBB. The latter is calculated as in the right panel of Figure 2, i.e. the bond spread between non-downgrade-vulnerable and downgrade-vulnerable firms, multiplied by the average maturity and the total offering amount of the bonds in the downgrade-vulnerable rating category over the years 2009–19.

the firm and bond characteristics to not be statistically different.²⁰

This methodology confirms that the bond financing costs of prospective fallen angels would have risen, over the period 2009 to 2019, by \$290 billion if prospective fallen angels had been downgraded—a magnitude close to the one discussed in the [Introduction](#). Moreover, [Figure 14](#) shows that firms rated BB, A, and AAA-AA benefit from a much smaller subsidy, well below \$50 billion over the same sample period.

²⁰To ensure the robustness of our estimated subsidy for the prospective fallen angels, we measure the mean difference between the offering spread of bonds issued by downgrade-vulnerable BBB firms in a given year and the offering spread of bonds issued by BB firms in the same industry-year across different score cut-offs. In [Appendix B.13](#), we show that changing the score cutoff does not result in material differences in the relative spreads, and thus does not lead to large differences in the total subsidy estimated.

7.2 Spillovers to competing firms

We have documented that the market share of prospective fallen angels increases substantially in our sample period, and especially since 2013–14, largely driven by M&A. We have also shown that prospective fallen angels benefit from subsidized bond financing costs, which provides them with a competitive advantage over competitors. In this section, we show that non-downgrade-vulnerable firms are negatively affected by the presence of prospective fallen angels in their market.

This congestion externality is similar to the one documented in the context of zombie lending. Hence, we follow that literature (most notably Caballero et al. (2008)) and estimate the following regression at the firm-year level:

$$\begin{aligned} Y_{iht} &= \beta_1 \text{Non-Vulnerable}_{iht} \\ &+ \beta_2 \text{Non-Vulnerable}_{iht} \times \text{Share Vulnerable BBB}_{ht-1} + \eta_{ht} + \epsilon_{iht}, \end{aligned} \quad (8)$$

where i is a firm, h an industry, and t is a year. The dependent variables are employment growth, investment, sales growth, and markups. We also include industry-year fixed effects. Our coefficient of interest, β_2 , captures whether non-downgrade-vulnerable firms that operate in industries with a high share of prospective fallen angels perform differently than non-downgrade-vulnerable firms in industries with a lower share of prospective fallen angels.

Table 9 reports the estimation results. Panel A shows that, in the sample of rated firms, non-downgrade-vulnerable IG firms are negatively affected by the presence of prospective fallen angels. More precisely, the first two columns show that, while non-downgrade-vulnerable firms have on average higher employment growth rates and invest more, both employment and investment are impaired by the presence of prospective fallen angels. Moreover, these firms face lower sales growth and lower markups compared with firms that do not compete with a large share of prospective fallen angels. Panel B shows that these spillover effects are not present when we replace the share of prospective fallen angels with the overall share of downgrade-vulnerable firms. This result confirms the uniqueness of prospective fallen angels, also when it comes to driving negative spillover effects. Panel C confirms our main results for the full sample of firms (rated and unrated).

	Emp Growth	CAPX	Sales Growth	Markup
Panel A: Rated Firms - Vulnerable IG				
Non-vulnerable IG_{iht}	0.013 (0.008)	0.029** (0.011)	-0.003 (0.008)	0.570** (0.261)
Non-vulnerable $IG_{iht} \times \text{Share Vulnerable } BBB_{ht-1}$	-0.090** (0.042)	-0.112*** (0.041)	-0.089** (0.038)	-1.555** (0.767)
Observations	6,923	7,113	7,121	7,121
R-squared	0.112	0.318	0.278	0.256
Panel B: Rated Firms - Placebo				
Non-vulnerable IG_{iht}	0.023 (0.014)	0.019* (0.010)	0.003 (0.012)	0.363 (0.219)
Non-vulnerable $IG_{iht} \times \text{Share Vulnerable }_{ht-1}$	-0.040 (0.030)	-0.009 (0.023)	-0.022 (0.025)	0.087 (0.336)
Observations	6,923	7,113	7,121	7,121
R-squared	0.112	0.318	0.278	0.256
Panel C: All Firms				
Non-vulnerable e_{iht}	0.038*** (0.010)	0.040*** (0.011)	0.038*** (0.012)	0.395** (0.190)
Non-vulnerable $e_{iht} \times \text{Share Vulnerable } BBB_{ht-1}$	-0.068*** (0.025)	-0.094** (0.046)	-0.074** (0.029)	-0.873** (0.432)
Observations	26,009	27,471	26,978	26,872
R-squared	0.042	0.191	0.045	0.133
Industry-Year FE	✓	✓	✓	✓
Firm-level Controls	✓	✓	✓	✓

Table 9: Negative spillovers on other firms. This table presents estimation results from specification (8). The dependent variables are employment growth, CAPX/PPE, sales growth, and markups (defined as sales/cost of goods sold). Vulnerable (and non-vulnerable) is defined in Section 4.2. Panel A focuses on non-downgrade-vulnerable investment-grade firms and limits the sample to firms with a rating from at least one rating agency. Panel B focuses on all non-downgrade-vulnerable firms. Panel C focuses on non-downgrade-vulnerable firms using the entire sample of firms. Share Vulnerable BBB measures the asset-weighted share of downgrade-vulnerable BBB-rated firms in a two-digit SIC industry. Firm-level control variables include log of total assets, leverage, net worth, and an indicator variable for the rating bucket (AAA, AA, A, etc.). Standard errors clustered at the industry-level reported in parentheses. *** $p < 0.01$, ** $p < 0.05$, * $p < 0.1$.

8 Conclusion

We document an exorbitant privilege in the form of a bond market borrowing cost subsidy for prospective fallen angels, namely firms on the cusp of the investment-grade cutoff, and the costs that such privilege and corporate response to it impose on the economy. This subsidy, present since the Global Financial Crisis and driven by QE-induced demand for investment-grade bonds, induces prospective fallen angels to engage in risky M&A, exploiting the leniency of credit rating agencies in order to increase their market share.

Our results suggest that although the growth of risky investment-grade bond segment may have been a desired consequence of QE, the growing concentration of issuance in the *riskiest* investment-grade (BBB) bucket also comes at a cost that may run counter to central bank objectives. First, the subsidised firms grow disproportionately large and become more fragile, as evidenced by the unprecedented wave of fallen angels that were downgraded by multiple notches at the onset of the COVID-19 crisis. Second, the resulting spillover effects force their competitors to reduce employment, investment, markups, and sales growth. This capital misallocation cost of QE has not been documented hitherto, to the best of our knowledge, and may need to be factored in while considering the desirability, scale, scope, and duration of QE interventions in the future.

References

- ACHARYA, V., M. CROSIGNANI, T. EISERT, AND C. EUFINGER (2020): “Zombie Credit and (Dis-)Inflation: Evidence from Europe,” *Working Paper*.
- ACHARYA, V., T. EISERT, C. EUFINGER, AND C. HIRSCH (2019): “Whatever it takes: The Real Effects of Unconventional Monetary Policy,” *Review of Financial Studies*, 32, 3366–3411.
- ACHARYA, V. AND S. STEFFEN (2020): “The risk of being a fallen angel and the corporate dash for cash in the midst of COVID,” *Review of Corporate Finance Studies*, 9, 430–471.
- AHMED, A., B. HOFMANN, AND M. SCHMITZ (2021): “Foreign Institutional Investors, Monetary Policy, and Reaching for Yield,” *Working Paper*.
- AKTAS, N., D. PETMEZAS, H. SERVAES, AND N. KARAMPATSAS (forthcoming): “Credit Ratings and Acquisitions,” *Journal of Corporate Finance*.
- ALTMAN, E. (2020a): “COVID-19 And The Credit Cycle,” *Journal of Credit Risk*, 67–94, available at SSRN 3604361.
- ALTMAN, E. I. (2018): “A fifty-year retrospective on credit risk models, the Altman Z-score family of models and their applications to financial markets and managerial strategies,” *Journal of Credit Risk*, 14.
- (2020b): “Covid-19 and the Credit Cycle,” *Journal of Credit Risk*, 16, 1–28.
- ALTMAN, E. I., E. HOTCHKISS, AND W. WANG (2019): *Corporate financial distress, restructuring, and bankruptcy: analyze leveraged finance, distressed debt, and bankruptcy*, John Wiley & Sons.
- BAGHAI, R., B. BECKER, AND S. PITSCHNER (2020): “The Use of Credit Ratings in Financial Markets,” *Working Paper*.
- BANERJEE, R. AND B. HOFMANN (2020): “Corporate zombies: Anatomy and life cycle,” *Bank for International Settlements Working Papers*, 1–28.
- BANERJEE, R. N. AND B. HOFMANN (2018): “The rise of zombie firms: causes and consequences,” *BIS Quarterly Review*.
- BECKER, B. AND V. IVASHINA (2015): “Reaching for Yield in the Bond Market,” *The Journal of Finance*, 70, 1863–1902.
- BECKER, B. AND T. MILBOURN (2011): “How did increased competition affect credit ratings?” *Journal of Financial Economics*, 101, 493–514.
- BLACKROCK (2020): “Assessing risks in the BBB-rated corporate bond market,” Online, accessed 18 August 2020.

- BOYARCHENKO, N., R. CRUMP, A. KOVNER, AND O. SHACHAR (2021): “Measuring Corporate Bond Dislocations,” *Federal Reserve Bank of New York Staff Reports*.
- BRUNO, V., J. CORNAGGIA, AND K. J. CORNAGGIA (2016): “Does Regulatory Certification Affect the Information Content of Credit Ratings?” *Management Science*, 62, 1578–1597.
- CABALLERO, R. J., T. HOSHI, AND A. K. KASHYAP (2008): “Zombie Lending and Depressed Restructuring in Japan,” *American Economic Review*, 98, 1943–77.
- ÇELİK, S., G. DEMIRTAS, AND M. ISAKSSON (2020): *Corporate bond market trends, emerging risks and monetary policy*, OECD Capital Market Series, Paris.
- CHERNENKO, S. AND A. SUNDERAM (2012): “The real consequences of market segmentation,” *The Review of Financial Studies*, 25, 2041–2069.
- CORNAGGIA, J. AND K. CORNAGGIA (2013): “Estimating the Costs of Issuer-Paid Credit Ratings,” *The Review of Financial Studies*, 26, 2229–2269.
- DARMOUNI, O., O. GIESECKE, AND A. RODNYANSKY (2021): “The Bond Lending Channel of Monetary Policy,” *Working Paper*.
- DI MAGGIO, M., A. KERMANI, AND C. PALMER (2020): “How Quantitative Easing Works: Evidence on the Refinancing Channel,” *Review of Economic Studies*, 87, 1498–1528.
- FABO, B., M. JANCOKOVA, E. KEMPF, AND L. PASTOR (2021): “Fifty Shades of QE: Comparing Findings of Central Bankers and Academics,” *Working Paper*.
- FALATO, A., I. GOLDSTEIN, AND A. HORTACSU (2021a): “Financial Fragility in the Covid-19 Crisis: The Case of Investment Funds in Corporate Bond Markets,” *Working Paper*.
- FALATO, A., A. HORTACSU, D. LI, AND C. SHIN (2021b): “Fire-sale Spillovers in Debt Markets,” *Journal of Finance*, 76, 3055–3102.
- FOLEY-FISHER, N., R. RAMCHARAN, AND E. YU (2016): “The Impact of Unconventional Monetary Policy on Firm Financing Constraints: Evidence from the Maturity Extension Program,” *Journal of Financial Economics*, 122, 409–429.
- GAGNON, J., M. RASKIN, J. REMACHE, AND B. SACK (2011): “The Financial Market Effects of the Federal Reserve’s Large-Scale Asset Purchases,” *International Journal of Central Banking*, 7, 3–43.
- GILCHRIST, S., B. WEI, V. Z. YUE, AND E. ZAKRAJŠEK (2020): “The Fed Takes on Corporate Credit Risk: An Analysis of the Efficacy of the SMCCF,” NBER Working Papers 27809, National Bureau of Economic Research, Inc.
- GILCHRIST, S. AND E. ZAKRAJSEK (2012): “Credit Spreads and Business Cycle Fluctuations,” *American Economic Review*, 102, 1692–1720.

- GOLDSTEIN, I. AND C. HUANG (2020): “Credit Rating Inflation and Firms’ Investments,” *Journal of Finance*, 75, 2929–2972.
- GREENWOOD, R., S. HANSON, A. SHLEIFER, AND J. SORENSEN (forthcoming): “Predictable Financial Crises,” *Journal of Finance*.
- GREENWOOD, R. AND A. VISSING-JORGENSEN (2018): “The Impact of Pensions and Insurance on Global Yield Curves,” *Working Paper*.
- GUERRIERI, V. AND P. KONDOR (2012): “Fund Managers, Career Concerns, and Asset Price Volatility,” *American Economic Review*, 102, 1986–2017.
- HADDAD, V., A. MOREIRA, AND T. MUIR (2021): “When Selling Becomes Viral: Disruptions in Debt Markets in the COVID-19 Crisis and the Fed’s Response,” *Review of Financial Studies*, 34, 5309–5351.
- HERPFER, C. AND G. MATURANA (2021): “Who Prices Credit Rating Inflation?” *Working Paper*.
- IANNOTTA, G., G. PENNACCHI, AND J. SANTOS (2019): “Ratings-Based Regulation and Systematic Risk Incentives,” *The Review of Financial Studies*, 32, 1274–1415.
- IVASHINA, V. AND B. VALLÉE (2020): “Weak Credit Covenants,” *Working Paper*.
- JOHN, T. AND K. JOHN (1993): “Top-Management Compensation and Capital Structure,” *Journal of Finance*, 48, 949–974.
- KRISHNAMURTHY, A. AND T. MUIR (2020): “How Credit Cycles across a Financial Crisis,” *Working Paper*.
- KRISHNAMURTHY, A. AND A. VISSING-JORGENSEN (2011): “The Effects of Quantitative Easing on Interest Rates: Channels and Implications for Policy,” *Brookings Papers on Economic Activity*.
- KUBITZA, C. (2021): “Investor-Driven Corporate Finance: Evidence from Insurance Markets,” *Working Paper*.
- LUCK, S. AND T. ZIMMERMANN (2020): “Employment effects of unconventional monetary policy: Evidence from QE,” *Journal of Financial Economics*, 135, 678–703.
- MIDRIGAN, V. AND D. XU (2014): “Finance and Misallocation: Evidence from Plant-Level Data,” *American Economic Review*, 104, 422–458.
- MORGAN STANLEY (2018a): “M&Aking a Leveraged Balance Sheet,” *Corporate Credit Research North America*.
- (2018b): “The Nature of the BBBeast,” *Corporate Credit Research North America*.
- RAJAN, R. (2013): “A step in the dark: unconventional monetary policy after the crisis,” *Andrew Crockett Memorial Lecture*.

- RODNYANSKY, A. AND O. DARMOUNI (2017): “The Effects of Quantitative Easing on Bank Lending Behavior,” *Review of Financial Studies*, 30, 3858–3887.
- S&P GLOBAL (2020a): “BBB Bond Downgrades Added USD 88 Billion to the High-Yield Bond Market YTD,” Online, accessed 1 February 2021.
- (2020b): “Fed expands primary and secondary facilities to boost fallen angels,” Online, accessed 27 September 2021.
- STEIN, J. (2013): “Overheating in Credit Markets: Origins, Measurement, and Policy Responses,” “*Restoring Household Financial Stability after the Great Recession: Why Household Balance Sheets Matter*” research symposium.
- VAYANOS, D. AND J.-L. VILA (2021): “A Preferred-Habitat Model of the Term Structure of Interest Rates,” *Econometrica*, 89, 77–112.
- WHITED, T. AND J. ZHAO (2021): “The Misallocation of Finance,” *The Journal of Finance*, 76, 2359–2407.
- WU, J. AND F. XIA (2016): “Measuring the Macroeconomic Impact of Monetary Policy at the Zero Lower Bound,” *Journal of Money, Credit, and Banking*, 48, 253–291.

Appendix A Data set construction

Issuer-level analysis We start with the capital information provided by WRDS Capital IQ, which covers over 60,000 public and private companies globally. The data set describes the firms' debt capital structure over the years 2009 to 2019. We drop the observations for which the debt categories²¹ do not add up to 100 per cent and deviate by more than 5 per cent. Moreover, we exclude the observations for which the principal debt amount percentage is missing.²²

We then combine the CapitalIQ data with the company specific information from Compustat North America, which provides the financial statements of listed American and Canadian firms. We further reduce the sample by dropping firms that are not incorporated in the U.S. or have a SIC-code between 6000-6999. In addition, we exclude the observations that contain missing values for the CapitalIQ debt categories or the Compustat debt items. To merge the debt items of the two providers, we match the total amount of debt outstanding of CapitalIQ to the sum of the current liabilities (DLC) and long-term debt (DLTT) items of Compustat. We drop the observations for which the two values vary by more than 10 per cent to assure a clean matching procedure. Moreover, we drop firms that have a leverage ratio exceeding one.

The issuer CUSIPs allow us to merge the Capital IQ Compustat data set to the rating data from Thomson Reuters, which provides worldwide coverage on ratings from S&P, Moody's and Fitch. We follow [Becker and Milbourn \(2011\)](#) in transferring the ratings into numerical values to estimate the firms' median ratings. For the rating classification, we refer to [Table A.1](#) in the Appendix. Furthermore, we use the issuer CUSIPS to obtain M&A deal information from ThomsonOne. Combining all the data sources, we investigate a total of 6,145 firms.

Bond-level analysis The second type of data sets we create are on a bond-level and are used to investigate primary and secondary market pricing. For the primary market analysis, we use Mergent Fixed Income Securities Database (FISD), a fixed income database that includes issue details of publicly-offered U.S. bonds. This sample consists of 6,460 bond issues and 909 issuers. For the second market pricing, we use TRACE, which is a database that constitutes of real-time secondary market information on transactions in the corporate bond market. This analysis is based on 7,741 outstanding bonds by 1,146 issuers, with bond b , firm j , year t as unit of observation. For the COVID analysis, we extend our data set to 2020.

Investor-level analysis Our investor-level analysis is based on a data set constructed using the eMAXX Bond Holders data from Refinitiv, matched with the Fed SOMA portfolio data and our issuer-level and bond-level information. The data set is constructed as follows.

²¹The debt categories consist of commercial paper, revolving credit, subordinated bonds and notes, senior bonds and notes, general/other borrowings, capital leases, and term loans. We also take into account the total trust preferred, unamortized premium, unamortized discount and adjustment items.

²²The principal debt amount outstanding percentage can deviate from 100 per cent due to potential debt adjustments. The percentage is used to scale the principal debt outstanding to the total amount of debt outstanding.

Moody's	S&P/Fitch	Numerical value assigned
AAA	AAA	28
Aa	AA	24, 25, 26
A	A	21, 22, 23
Baa	BBB	18, 19, 20
Ba	BB	15, 16, 17
B	B	12, 13, 14
Caa	CCC	9, 10, 11
Ca	CC	7
C	C	4
D	D	-

Table A.1: Rating classification. This table presents the rating mapping used in this paper, taken from [Becker and Milbourn \(2011\)](#).

The data set from eMAXX has security level holdings at a quarterly frequency from 2008Q4. Securities are identified with cusip8 and the holdings amount are denominated in USD. There are two investors' identifiers: firmid (uniquely identifies a managing firm) and fundid (uniquely identifies a sub-account). This data has around 160 million observations corresponding to 4,244 unique firmid and 47,145 fundid. Note that one firmid might have several different fundid (there might be multiple funds per firm) and one fundid might have several different firmid (funds might be co-managed by different firms). We use fundid to identify investors in our analysis. We measure investor-level exposure to QE in quarter t calculating the share of investor total holdings that are held by the Fed (holdings are weighted by the share of amounts outstanding held by the Fed). Having calculated this exposure (and total holdings and total corporate bond holdings for each fund), we only keep observations corresponding to securities issued by the 6,179 issuers at the intersection of Compustat and CapIQ that have bonds outstanding in the period from June 30, 2009 to December 31, 2019. We identify issuers using cusip6 and gvkey. We end up with around 16 million observations, corresponding to 14,268 investors, 1,701 issuers, and 13,359 securities. At this stage, we match the data set with investor level characteristics from eMAXX Bond Holders and security-level characteristics (amount issued, issued date, maturity, M&A purpose dummy), bringing our data set to 13.8 million observations, corresponding to 13,577 investors, 1,494 issuers, and 11,231 securities. We then collapse our data set at the issuer-investor-quarter level. Our data runs quarterly from 2009 to 2019 and features 2,750 investors and 1,442 corporate bond issuers. Out of the 2,750 funds, 223 are annuities, 590 are life and health insurance, 934 are property and casualty insurance, and around 800 are mutual funds (the exact number depends on definition of mutual fund). Out of the 1,442 corporate bond issuers, 3 are rated AAA, 24 are rated AA, 137 are rated A, 360 are rated BBB, 390 are rated BB, and 345 are rated B.

Transferring ratings into numerical values Following [Becker and Milbourn \(2011\)](#), we transfer the ratings of S&P, Moody and Fitch into numerical values using [Table A.1](#). This way we can estimate the median rating for each rated firm in our data set.

Ratings	Z-score 2006	Z-score 2013
AAA	7.91	8.80
AA	7.78	8.40
A	7.10	6.12
BBB	6.36	5.70
BB	5.65	5.07
B	3.68	3.74
CCC	1.62	1.72
CC	0.84	0.05

Table A.2: Z"-score cutoff points This table presents the Z-score values for each rating category from Altman (2020b).

Z"-score cutoff points We take median Z-score values for each rating category from Altman (2020b). These medians are measured in 2013 for the main analysis and in 2006 for the pre-GFC sample.

Appendix B Additional figures and results

B.1 Aggregate evidence

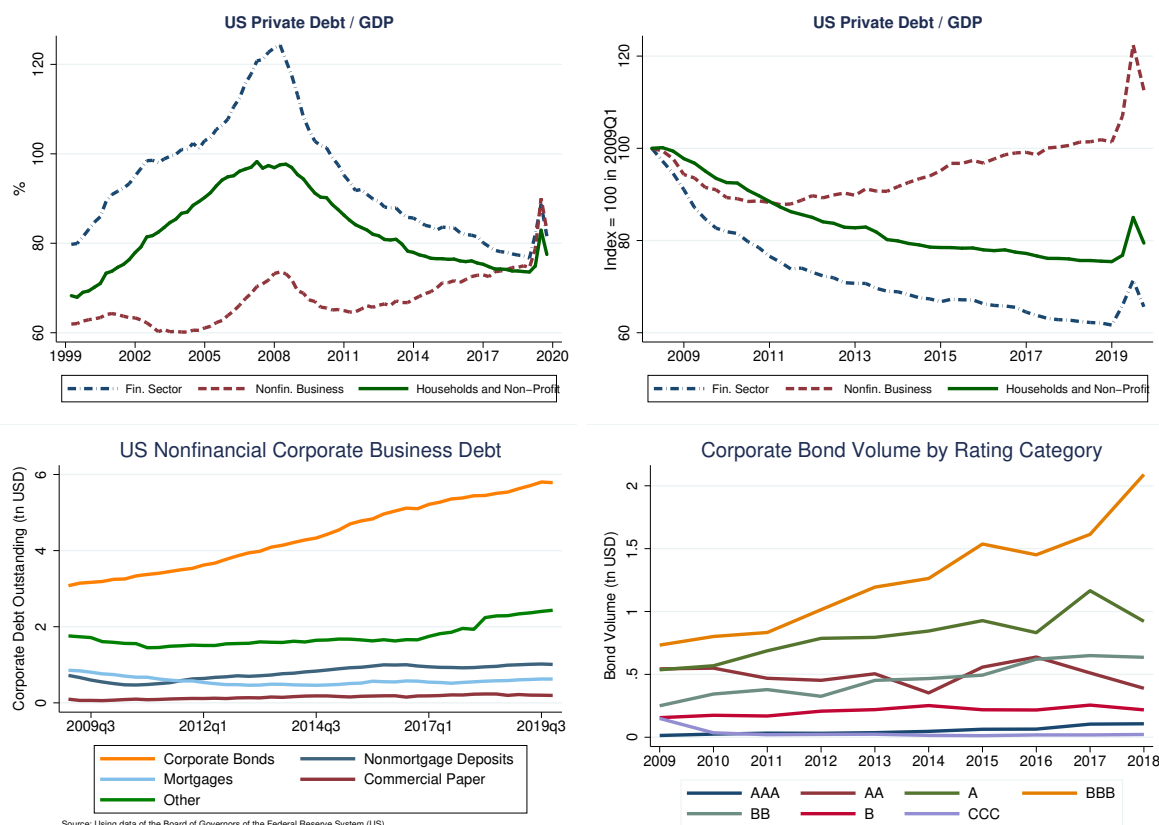


Figure B.1: The growth of the U.S. non-financial corporate debt. This figure shows the growth of the U.S. non-financial corporate debt and, in particular, of the U.S. corporate bond market. The top left panel shows the evolution of the financial sector debt, non-financial sector debt, and household debt, normalized by GDP. The sources are series dodfs, tbsdodns and cmdebt from FRED. The top right panel is an index where these series are normalized to 100 in 2009Q1. The bottom left panel shows the evolution of corporate bonds, mortgages, non-mortgage deposits (includes loans from banks, credit unions, and savings and loans associations), commercial paper and other (loans from non-bank institutions, excluding mortgages, and industrial revenue bonds). The sources are series cblbsnncb, mlbsnncb, ncbilia027n, cplbsnncb and olalbsnncb from FRED. The bottom right panel shows the evolution of the stock outstanding of corporate bonds, grouped by rating category. Sources: Capital IQ and Thomson Reuters.

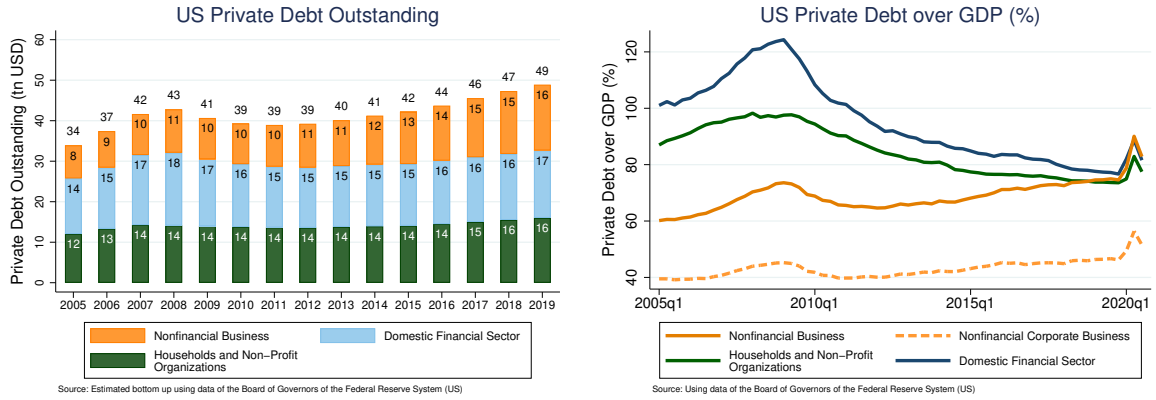


Figure B.2: U.S. private debt. This figure shows the aggregate figures for the private debt outstanding in the U.S. using data of the FRED. In Panel A, we show the breakdown in absolute numbers. In Panel B, we relate the different debt components to GDP.

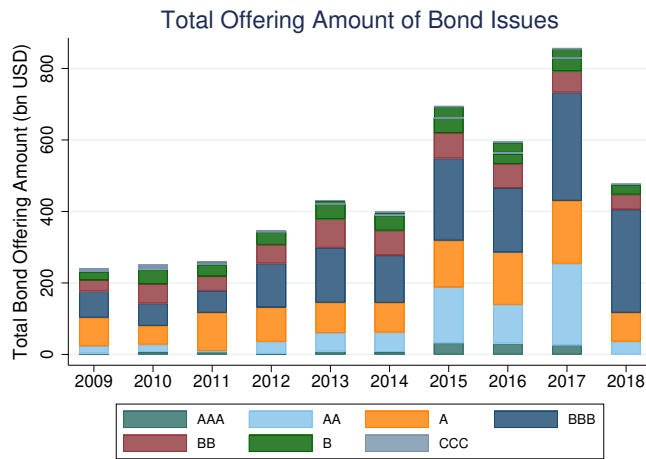


Figure B.3: Bond issues by rating. This figure shows the offering amounts over time by firm rating bucket.

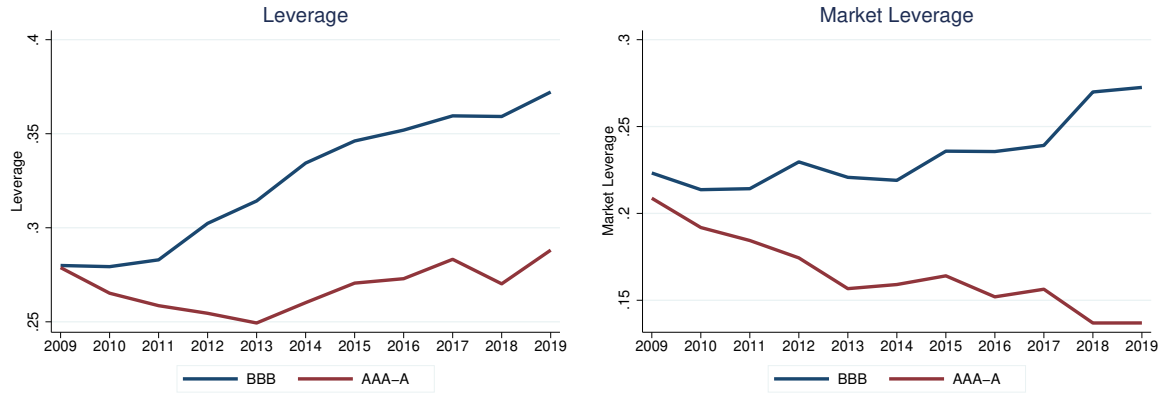


Figure B.4: Leverage over Time. This figure shows the leverage evolution for BBB and IG-rated firms over the years 2009 to 2019. In Panel A, we show the asset-weighted book leverage, which is defined by a firm’s total debt over assets. In Panel B, we show the asset-weighted market leverage, which is defined by a firm’s total debt over the market value of its assets.

B.2 Compression of BBB spreads

We provide further evidence that the bond financing cost of BBB firms dropped significantly, and more than the financing costs of other investment grade issuers, since 2009. In Figure B.5, we show the compression of bond spreads by tracking the distribution of primary market spreads (top panel) and secondary market spreads (bottom panel) from 2010–12 (dashed lines) to 2013–16 (solid lines). The left panels compare the distribution of BBB bond spreads with the distribution of A bond spreads. The right panels compare the distribution of BBB bond spreads with the distribution of AA bond spreads. The four panels document a pronounced leftward shift of BBB spreads in the primary and the secondary market. If anything, we observe a slight *rightward* shift for A and AA spreads. In Figure B.8, we show that the 2013–16 is characterized by a substantial monetary easing by the Federal Reserve.

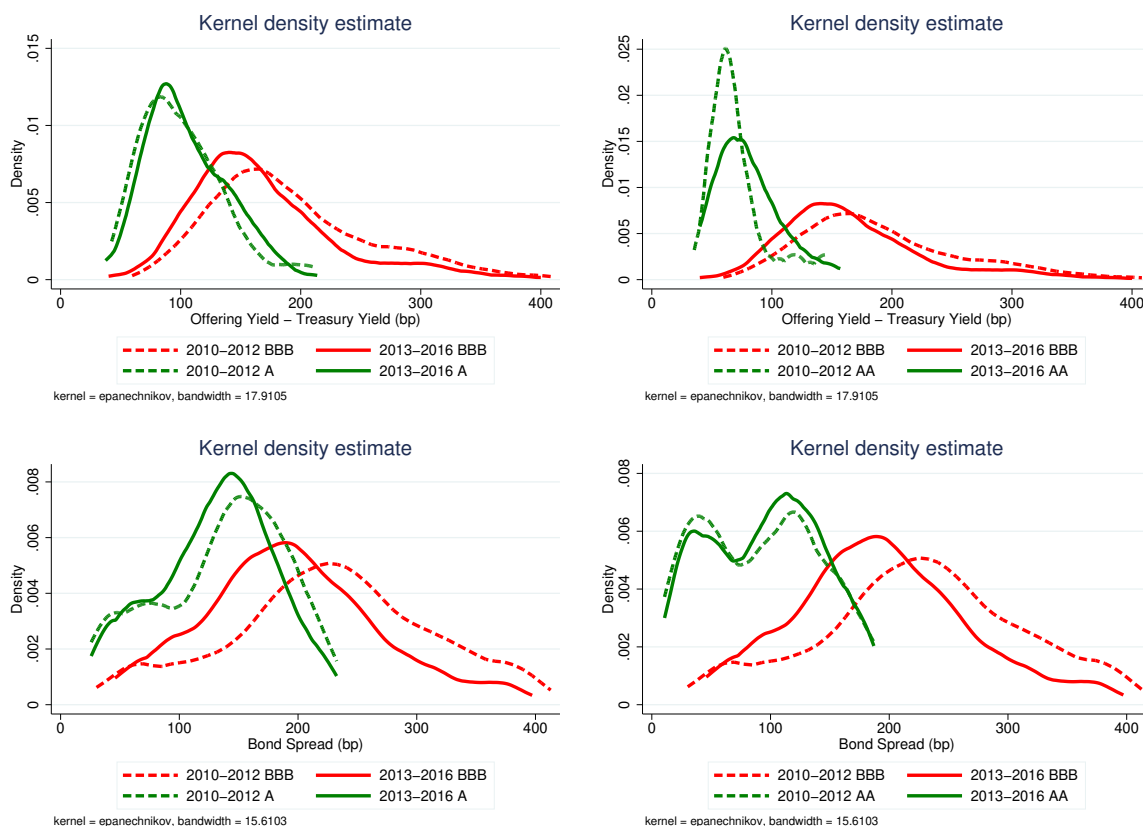


Figure B.5: Shift in bond spread distributions from 2010–12 to 2013–16. This figure shows how bond spreads distributions changed from 2010–12 (dashed lines) to 2013–16 (solid lines). The top panels show the distribution of offering spreads (offering yield–maturity adjusted treasury yield) for newly issued bonds. The bottom two panels show the distribution of secondary market spreads (bond yield–maturity adjusted treasury yield) for traded bonds. The left and right panels compare the distributions of BBB bond spreads (red lines) with the distributions of A bond spreads and AA bond spreads (green lines), respectively.

B.3 Validating the downgrade-vulnerability measure

In this section, we first show how the balance sheet characteristics of vulnerable rated firms differ from those of non-vulnerable rated firms. Thereafter, we show how a firm’s downgrade probability, balance sheet characteristics and firm performance change after a firm is classified as vulnerable.

In Table B.1, we present the descriptive statistics for the rated firms in our sample, separated for firms that are vulnerable and firms that are not vulnerable. The sample means highlight that vulnerable firms are larger and riskier along all dimensions. In particular, vulnerable firms have higher leverage, lower profitability, lower net worth, and a lower interest coverage ratio. Their sales growth, employment growth, and investment ratio are also significantly lower than those of non-vulnerable firms. The last column shows a test for the difference in means.

Next, we show that vulnerable firms are more likely to be downgraded and to be assigned a negative credit watch or outlook status relative to non-vulnerable firms. To this end, we estimate the following specification:

$$Y_{iht+1} = \beta_1 \text{Vulnerable}_{iht} + \beta_2 X_{iht} + \mu_{ht} + \epsilon_{iht+1},$$

where i is a firm, h an industry, and t a year. Our dependent variable Y is a dummy equal to one in the case of a negative watch event in t or $t + 1$, or a downgrade event in $t + 1$. To qualify as downgrade event, a firm must be downgraded by at least one rating category in year $t + 1$, i.e. a firm that has a rating of A+, A, or A- is downgraded to at least BBB+. *Vulnerable* is a dummy equal to one if a firm is vulnerable in period t and μ_{ht} are industry-year fixed effects. X_{iht} is a vector of controls, namely the logarithm of total assets, leverage, and the interest coverage ratio.

Table B.2 presents the estimation results. The first two columns show that a vulnerable company in year t is more likely to have a negative watch event in year t or $t + 1$. Similarly, the last two columns show that a vulnerable firm has a higher probability to be downgraded by at least one rating category in the next year.

	Downgrade-vulnerable	Non-downgrade-vulnerable	Difference
Total Assets	24,114	10,988	13,126***
Leverage	0.403	0.354	0.049***
EBITDA/Assets	0.104	0.132	-0.028***
Interest Coverage	7.747	13.114	-5.367***
Sales Growth	0.038	0.056	-0.017***
CAPX	0.188	0.225	-0.037***
Employment Growth	0.008	0.036	-0.027***
Net Worth	0.183	0.248	-0.066***

Table B.1: Descriptive statistics: downgrade-vulnerable and non-downgrade-vulnerable firms.

This table presents descriptive statistics for rated firms in our sample, separated into vulnerable and non-vulnerable firms. *Total Assets* is in millions, *Leverage* is total debt over total assets, *Interest Coverage* is EBITDA over interest expenses, *Sales Growth* is the growth rate in sales, *CAPX* is capex over PPE, *Employment Growth* is the growth rate in employment, *Net Worth* is the difference between common equity and cash divided by total assets.

	Negative Watch	Negative Watch	Downgrade	Downgrade
Vulnerable	0.078*** (0.018)	0.043** (0.018)	0.021*** (0.005)	0.018*** (0.005)
Size		0.017** (0.007)		0.003* (0.002)
Leverage		0.131** (0.055)		0.016 (0.015)
IC Ratio		-0.010*** (0.001)		-0.000** (0.000)
Industry-Year FE	✓	✓	✓	✓
Observations	9,056	8,973	9,431	9,341
R-squared	0.118	0.150	0.094	0.097

Table B.2: Credit rating actions after being classified as vulnerable. This table presents the estimation results from Specification (B1) for our sample of rated firms. The dependent variable *Negative Watch* is a dummy variable equal to one if a firm is placed on negative credit watch or outlook in year t or $t + 1$. The dependent variable *Downgrade* is a dummy variable equal to one if a firm is downgraded by at least one rating category in year $t + 1$, i.e., a firm that has a rating of A+, A, or A- is downgraded to at least BBB+. *Vulnerable* is a dummy equal to one if a firm is vulnerable in period t . Firm level control variables are size (log of total assets), leverage and IC ratio. Standard errors clustered at the firm level in parentheses. *** $p < 0.01$, ** $p < 0.05$, * $p < 0.1$.

Finally, we examine how the balance sheet characteristics of vulnerable firms change after the obtaining the vulnerability status. Following [Banerjee and Hofmann \(2020\)](#), we create a local linear projection specification, based on a sequence of regression models where the dependent variable is shifted several steps forward and backward in time, relative to a reference point. Our reference point is the date at which a firm is classified as vulnerable for the first time. Specifically, we estimate the following specification:

$$Y_{iht+q} = \beta_q \text{EnterVulnerable}_{iht} + \gamma_q \text{Vulnerable}_{iht} + \eta_q X_{iht+q} + \mu_{ht+q} + \epsilon_{iht+q}, \quad (\text{B1})$$

where i is a firm, h an industry, t a year, and $q \in \mathcal{Q}$, where $\mathcal{Q} = \{-3, -2, -1, 0, 1, 2, 3\}$. The dependent variable Y is asset growth, employment growth, sales growth, and capital expenditures in period $t + q$. *EnterVulnerable* is a dummy equal to one if a firm becomes vulnerable for the first time in period t . *Vulnerable* is a dummy equal to one if a firm is vulnerable in period t , but did not become vulnerable in period t for the first time, i.e., it has been classified as vulnerable before. This specification ensures we compare firms becoming vulnerable for the first time only to non-vulnerable firms. X_{iht+q} is the logarithm of total assets and μ_{ht+q} are industry-year fixed effects.

The coefficient of interest β_q measures a vulnerable firm's development, in the three years before and after the firm is classified as vulnerable, of sales growth, investments, asset growth, and employment growth. A positive (negative) coefficient implies that a vulnerable firm has a higher (lower) value of the respective dependent variable compared to a non-vulnerable firm. [Figure B.6](#) shows the estimated β_q coefficients, documenting that firm performance deteriorates once it becomes vulnerable. Its sales growth and investment decline significantly, a dynamic also reflected in the drop in firm size and employment growth.

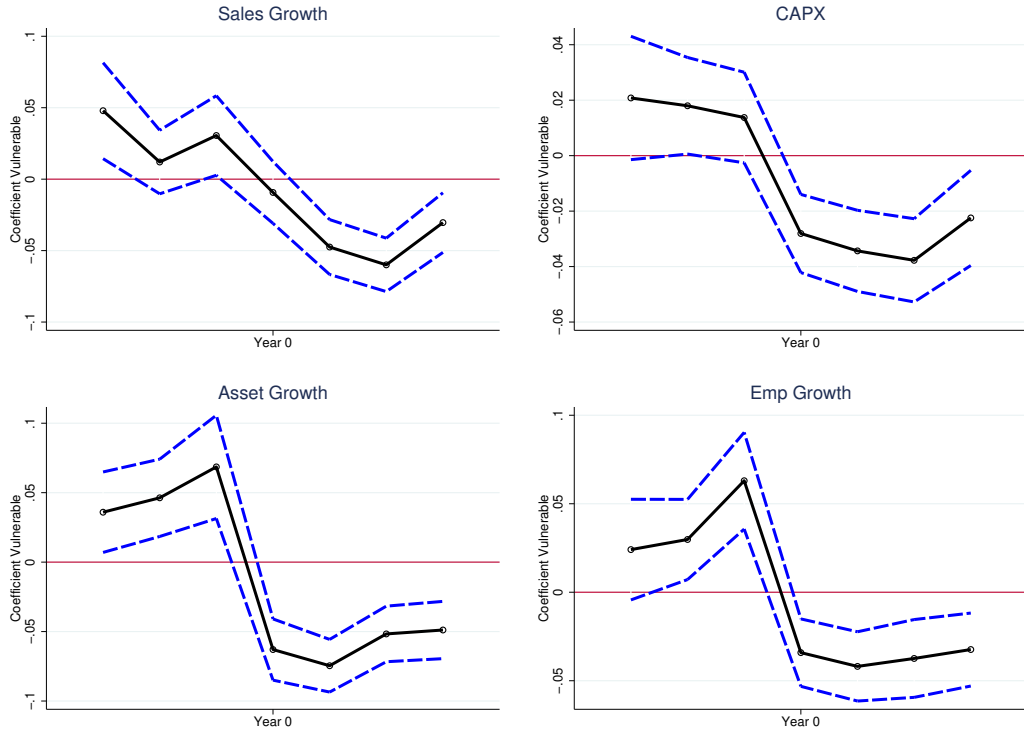


Figure B.6: Firm performance after being classified as downgrade-vulnerable. This figure shows the evolution of the estimated coefficient β_q from Specification (B1) three years before and after a firm becomes downgrade-vulnerable. Year zero corresponds to the first year a firm is classified as downgrade-vulnerable. The 95% confidence interval is reported, with standard errors clustered at the firm level.

B.4 Risk materialization with COVID-19

In this section, we provide parametric evidence that BBB firms with more inflated credit ratings experienced a sharper increase in spreads in 2020. Finally, we show non-parametrically that the vulnerable BBB-rated firms that engaged in M&A activity in the past had more (severe) downgrades than vulnerable BBB-rated firms that did not.

In a next step we provide more formal evidence for that riskier BBB firms experienced a sharper increase in bond spreads in March 2020. More precisely, we estimate the following specification in which we relate the degree of ratings inflation at the start of 2020 to the change in a firm’s bond spreads:

$$\Delta Spread_{ijh} = \beta_1 Rating\ Inflation_{jh} + \gamma_{jh} + \phi_h + \epsilon_{ijh} \quad (B2)$$

$\Delta Spread_{ijh}$ is the change in secondary market spread between January 2020 and March 2020 of bond i of firm j in industry h , $Rating\ Inflation_{jh}$ is the difference between the issuer rating at the start of 2020 and the implied rating based on Altman Z' -score, and ϕ_h are industry fixed effects.

Table B.3 presents our results. In Column (1) we show that a greater difference between a vulnerable BBB rated firm’s assigned rating and its implied rating leads to a greater change in spreads when the pandemic started. In particular, a one notch inflated issuer rating is on average associated with a 16 basis points increase in bond spreads for vulnerable BBB rated firms. In contrast the second columns shows that no such relationship exists for the other vulnerable investment grade rated firms.

	Δ Spread	Δ Spread
Rating Inflation	15.804*** (3.529)	-1.178 (5.822)
Sample	Vuln. BBB	Vuln. A-AAA
Industry FE	✓	✓
Firm Controls	✓	✓
Observations	751	391
R-squared	0.503	0.552

Table B.3: Change in spreads of rating-inflated firms during COVID-19. This table presents estimation results from the bond-level regression (B2). The dependent variable is $\Delta Spread$, which is defined as the change in secondary market spread between January 2020 and March 2020 of a single bond. The independent variable is $RatingInflation$ and is defined as the issuer rating at the start of 2020 minus the implied rating based on Altman Z' -score. We add a firm’s total assets as firm control, and a set of industry fixed effects. In the first column the sub-sample consists of BBB rated firms and in the second column of non-BBB investment grade rated firms. Standard errors are clustered at the firm j level and reported in parentheses. *** $p < 0.01$, ** $p < 0.05$, * $p < 0.1$.

B.5 Bond covenants

	Spread _{it}	Spread _{it}	Offer Spread _{it}	Offer Spread _{it}
A _{it}	40.722*** (8.738)	49.736*** (8.796)	35.076** (15.111)	11.809 (8.247)
BBB _{it}	102.670*** (9.053)	112.053*** (9.373)	130.143*** (15.155)	102.591*** (8.354)
BB _{it}	246.345*** (11.108)	244.481*** (13.197)	306.275*** (18.328)	260.726*** (14.436)
B _{it}	397.559*** (16.765)	367.765*** (26.536)	480.113*** (21.802)	412.145*** (22.201)
CCC _{it}	1,080.257*** (105.278)	1,068.343*** (191.751)	678.166*** (68.427)	455.960*** (33.746)
Vulnerable _{it} × AAA-AA _{it}	24.334*** (8.653)	29.052*** (8.430)	9.801 (16.604)	-13.231 (9.809)
Vulnerable _{it} × A _{it}	-3.932 (5.449)	-13.660 (8.986)	-7.050 (9.695)	-3.317 (11.895)
Vulnerable _{it} × BBB _{it}	-18.271*** (4.699)	-33.221*** (7.111)	-28.111*** (8.359)	-36.118*** (9.010)
Vulnerable _{it} × BB _{it}	30.939*** (10.601)	38.309*** (12.906)	35.688** (14.330)	48.613** (23.390)
Vulnerable _{it} × B _{it}	79.262*** (26.628)	57.537* (32.975)	54.225 (33.019)	56.877 (58.003)
Vulnerable _{it} × CCC _{it}	449.019** (187.647)	489.642* (252.021)		
Industry-Year FE	✓	✓	✓	✓
Bond-level controls	✓	✓	✓	✓
Sample	Entire	2013–16	Entire	2013–16
Observations	19,322	9,015	3,133	1,160
R-squared	0.744	0.735	0.914	0.922

Table B.4: Covenants cannot explain the exorbitant privilege of prospective fallen angels. This table shows the estimation results of specification (1), additionally controlling for bond covenants. The dependent variable in columns (1)-(2) is the secondary market bond spreads. The dependent variable in columns (3)-(4) is the primary market bond spread. Bond spreads, measured in basis points, are the difference between bond and treasury yields of the same maturity. Vulnerable is a dummy equal to one if a firm is downgrade-vulnerable. Bond-level controls are residual maturity, a callable dummy, a liquidity measure and a covenant dummy. The covenant dummy takes the value of one if the respective bond includes a covenant. These specifications include industry-year fixed effects (2-digit SIC). Standard errors are clustered at the firm-level. *** p<0.01, ** p<0.05, * p<0.1.

B.6 Sensitivity of bond spreads to credit risk by ratings category

In this section, we show that, consistent with an exorbitant privilege of prospective fallen angels, the sensitivity of bond spreads to changes in credit risk is the weakest for BBB-rated issuers. To this end, we estimate the following specification:

$$\begin{aligned} Spread_{biht} = & \beta_1 Rating_{iht} + \beta_2 EDF_{iht} + \beta_3 Rating_{iht} \times EDF_{iht} \\ & + \Gamma X_{iht} + \mu_{ht} + \delta \times Z_b + \phi_i + \epsilon_{iht} \end{aligned} \quad (B3)$$

where $Spread_{biht}$ is the spread of bond b issued by firm i in industry h in period t , EDF_{iht} is the expected default frequency of firm i in period t , $Rating_{iht}$ is set of dummies for rating categories, μ_{ht} are industry-time fixed effects, and ϕ_i are firm fixed effects. As in the previous parametric test, we control for firm level and bond level characteristics. Figure B.7 presents the estimated sensitivities of bond spreads to EDFs within rating category, calculated as $\beta_2 \overline{EDF}_{iht} + \beta_3 Rating_{iht} \times \overline{EDF}_{iht}$, where \overline{EDF} is the mean EDF in each rating category. The U-shaped pattern with a minimum at BBB shows that the sensitivity of bond spreads to equity-based EDFs is weakest for BBB-rated issuers.

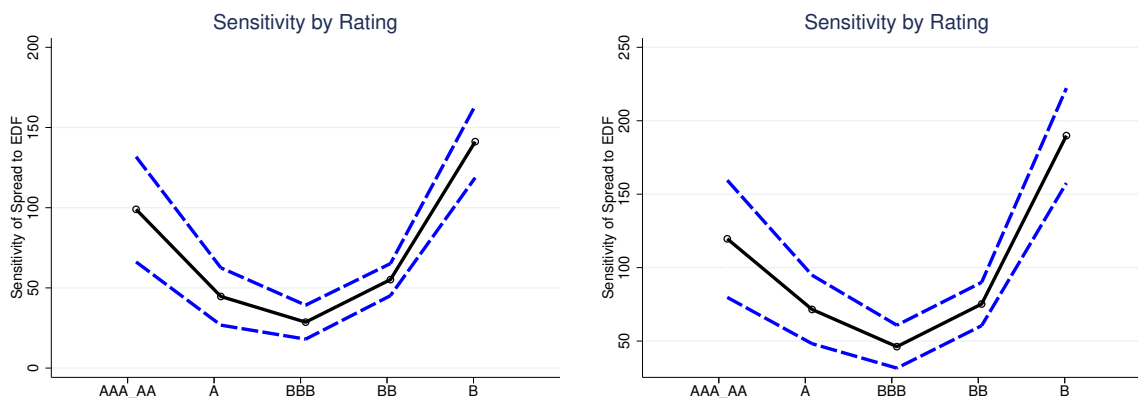


Figure B.7: Sensitivity of bond spreads to EDFs. This figure shows the sensitivity of bond spreads to 2-year EDFs (left panel) and 5-year EDFs (right panel). The points in the graph are obtained by calculating $\beta_2 \overline{EDF}_{iht} + \beta_3 Rating_{iht} \times \overline{EDF}_{iht}$, where the coefficients are estimated using Specification (B3) and \overline{EDF} is the mean EDF in each rating category. The dashed blue lines represent 95% confidence intervals.

B.7 Monetary policy stance

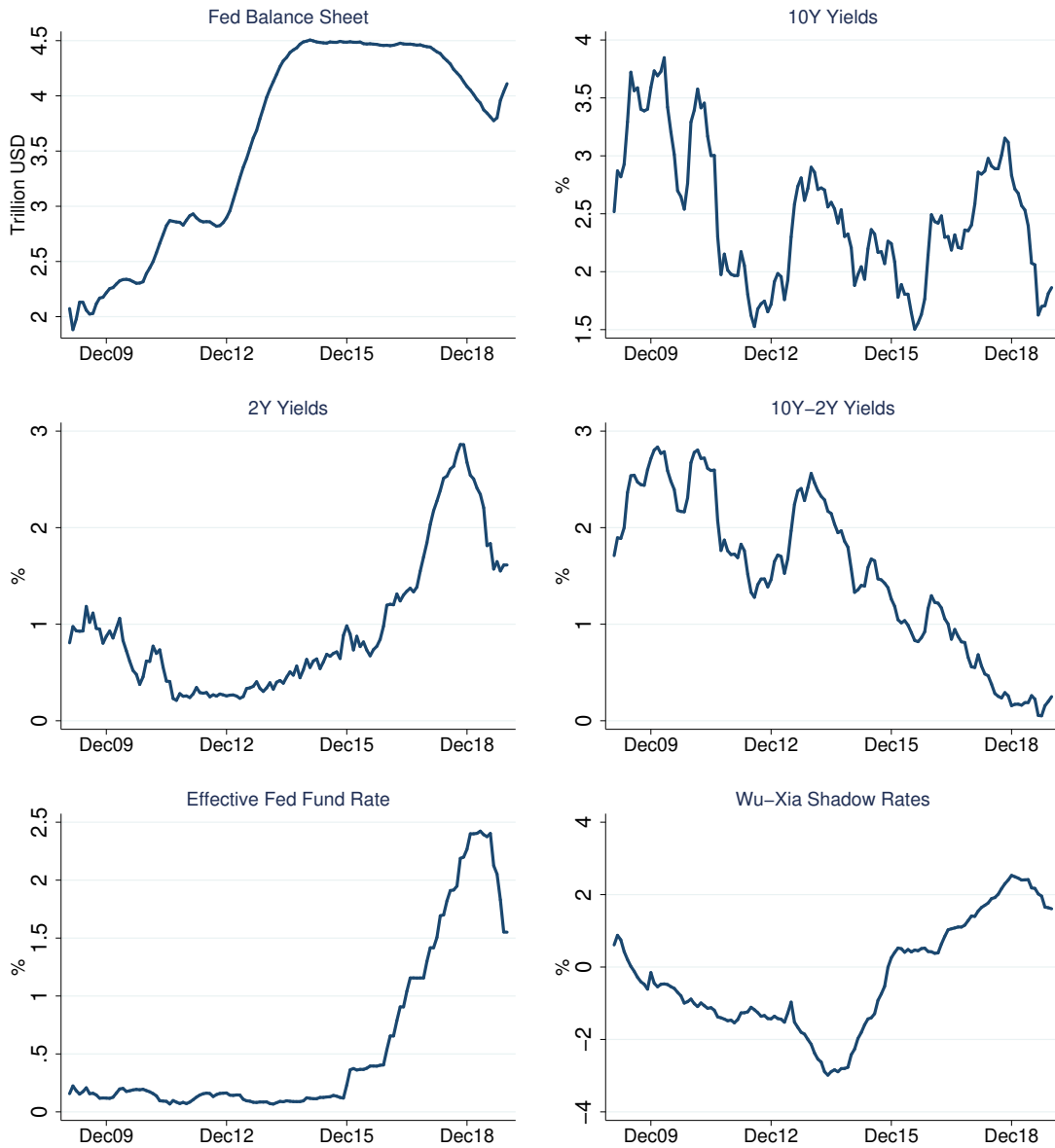


Figure B.8: Monetary policy stance. This figure shows the monetary policy stance in the U.S. during our sample period. The six panels show the size of the Fed balance sheet (trillion dollars), the 10-year Treasury yields (%), the 2-year Treasury yields (%), the difference between the 10-year and the 2-year Treasury yields, the effective fed fund rate, and the shadow rate developed in [Wu and Xia \(2016\)](#). The series are plotted with observations at a monthly frequency. The 10-year yields, the 2-year yields, and the effective fed fund rate are monthly averages of daily data. The fed balance sheet size is the monthly average of weekly data.

B.8 Investor exposure to QE

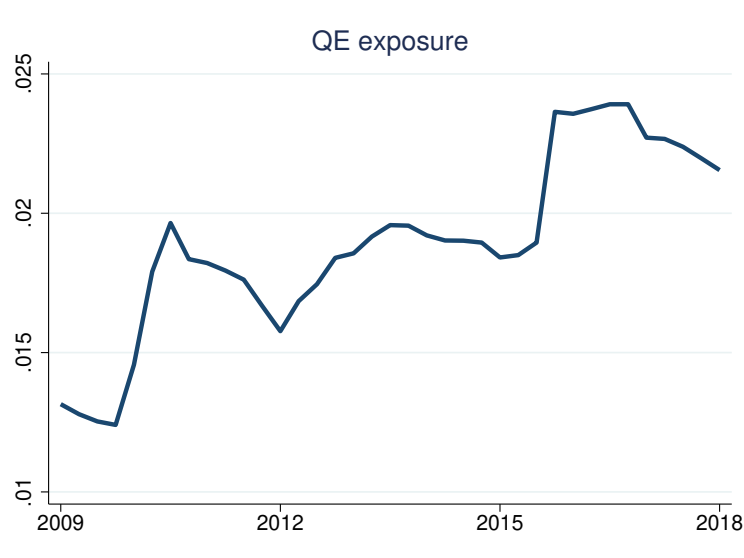


Figure B.9: Investor exposure to QE. This figure shows the evolution of the cross-sectional mean of the QE Exposure $_{kt}$ variable at a quarterly frequency. This variable is defined as the share of investor total holdings that are held by the Federal Reserve in the SOMA Treasury portfolio, where holdings are weighted by the share of amounts outstanding held by the Federal Reserve. Formally,

$$\text{QE Exposure}_{kt} = \frac{\sum_i (\text{Holdings}_{ikt} \times \text{SOMA}_{it})}{\sum_i \text{Holdings}_{ikt}}$$

where i is a security, k is an investor, and t is a date. SOMA_{it} is the share of Treasury security i held by the Federal Reserve at date t . Holdings_{ikt} are the holdings of security i held by investor k at time t .

B.9 M&A deal volume in the speculative-grade category

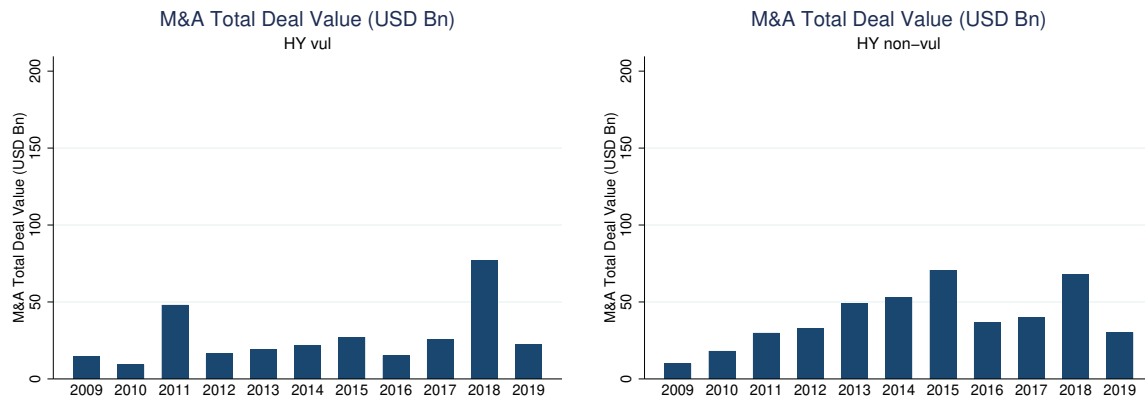


Figure B.10: M&A Total Deal Volume. This figure shows the total M&A deal volume for vulnerable and non-vulnerable firms in the high-yield (speculative-grade) category.

B.10 M&A's and broken promises

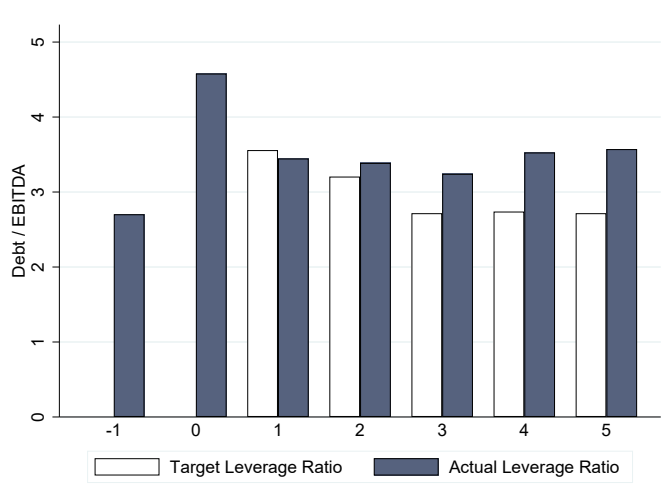


Figure B.11: Broken promises about debt reduction after M&A. This figure compares the year-by-year promised path of debt reduction with observed debt after firm M&A. The x-axis shows the years since transaction. The y-axis is debt divided by EBITDA. We assume that debt reduction plans (e.g., leverage from 10 to 5 in 5 years) have a linear schedule (i.e., leverage of 6 next year). In the case a target year is not specified, we assume a two-year deadline (the modal deadline). Source: data collected by the author from firms' official presentations, press releases, investor calls, and Fitch ratings.

B.11 M&A's and the COVID-shock

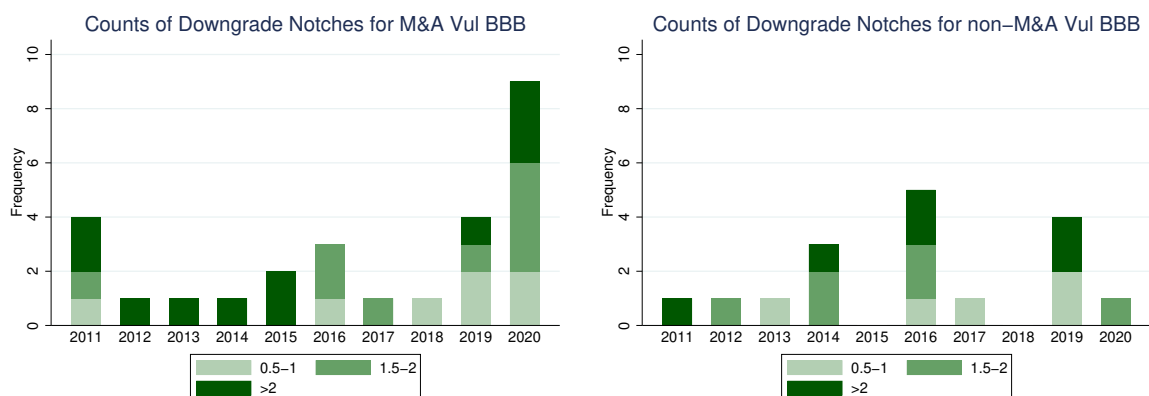


Figure B.12: Downgrade materialization of (prospective) fallen angels. This figure shows the number of downgrades that vulnerable BBB-rated firms have experienced in the years 2011 to 2020, and groups them according to their downgrade severity. The downgrade severity is measured by the number of notches a firm is being downgraded, and is subdivided into three broad categories: 0.5-1, 1.5-2, >2 notches. The left-hand panel plots the downgrade (notch) frequency for vulnerable BBB firms that have conducted an M&A since the year that they have become vulnerable. The right-hand panel shows the downgrade (notch) frequency for firms that have not conducted an M&A since the year that they have become vulnerable.

B.12 M&A risk-taking

In this section, we show that vulnerable BBB firms conduct larger M&A transactions relative to their size, use higher leverage relative to their profitability level and have more negative CARs compared to non-vulnerable firms. More specifically, we estimate the following specification:

$$\begin{aligned}
 Y_{iht} = & \beta_1 \text{Vulnerable}_{iht} + \beta_2 \text{BBB}_{iht} + \beta_3 \text{Vulnerable}_{iht} \times \text{BBB}_{iht} \\
 & + \gamma \times X_{iht} + \eta_{ht} + \epsilon_{iht},
 \end{aligned}
 \tag{B4}$$

where i is a firm, h an industry, and t a year. Y_{iht} measures the relative deal size, net debt/EBITDA (adjusted to Y_{iht+1}) and CARs (adjusted to deal level). The coefficient β_1 captures the effect of a firm's vulnerable status on the dependent variable. The coefficient β_2 captures the effect of a firm's BBB rating on the dependent variable. The coefficient β_3 captures whether the effect of a firm vulnerable status on the dependent variable is different for BBB rated firms compared with non-BBB rated firms. We include industry-year fixed effects to absorb time-varying industry level heterogeneity (e.g., demand shocks) and time-varying firm level controls.

	Relative Deal Size	Net Debt/EBITDA	CARs
Vulnerable \times BBB	0.055** (0.025)	0.373* (0.212)	-0.010* (0.005)
Vulnerable	-0.033** (0.015)	-0.263 (0.183)	0.003 (0.004)
BBB	-0.045*** (0.013)	-0.222* (0.125)	0.001 (0.003)
Controls	✓	✓	✓
Industry-Year FE	✓	✓	✓
Sample Level	M&A Rated Firm	M&A Rated Firm	M&A Rated Deal
Observations	1,840	2,625	2,412
R-squared	0.261	0.470	0.197

Table B.5: M&A and risk-taking. This table presents the risk-taking of vulnerable BBB-rated firms in the year of (t) and after ($t+1$) the announced M&A transaction. Column (1) shows the results for the relative deal size, which is measured by the total transaction value of a firm in a given year over its lagged assets. We restrict our sample to firm-years with total transaction value bigger than zero. Column (2) shows the net debt/EBITDA levels for the M&A rated firms in the year after the M&A announcement. For Column (1) and (2) the firm controls consist of the log of assets, profitability, leverage and tangibility. Column (3) presents the 5-day cumulative abnormal returns for the M&A deals performed by the rated firms in our sample, for which we run the specification on a deal level. The total return value-weighted index is used as benchmark over a -210 to -11 day period. Control variables include the logarithm of total assets, leverage, profitability, an indicator variable for whether the deal is at least partially financed with stock, an indicator variable for whether the target has the same 2-digit SIC code as the acquiror, an indicator variable for whether the deal is cross-border, an indicator variable for a publicly listed target and the pre-deal buy-and-hold returns of the acquiror from -210 to -11 days. A t -test shows that on average the CARs of BBB vulnerable firms are -1 per cent. All specifications include industry-year fixed effects. Standard errors are clustered at the firm level.

B.13 Quantifying the subsidy for prospective fallen angels

To compute the subsidy for the prospective fallen angels, we multiply the mean difference between the offering spread of bonds of downgrade-vulnerable BBB firms and the offering spread of bonds of matched BB firms by the average bond maturity and the total offering amount in the vulnerable BBB rating bucket in a given year, and sum over our 2009 to 2019 sample period. To ensure the robustness of our mean spread difference based on our matched sample, we estimate the mean spread difference for various matching score cutoffs. As shown in Figure B.13, the spread difference is stable across the different score cutoffs, and thus does not lead to material differences in our total subsidy estimate.

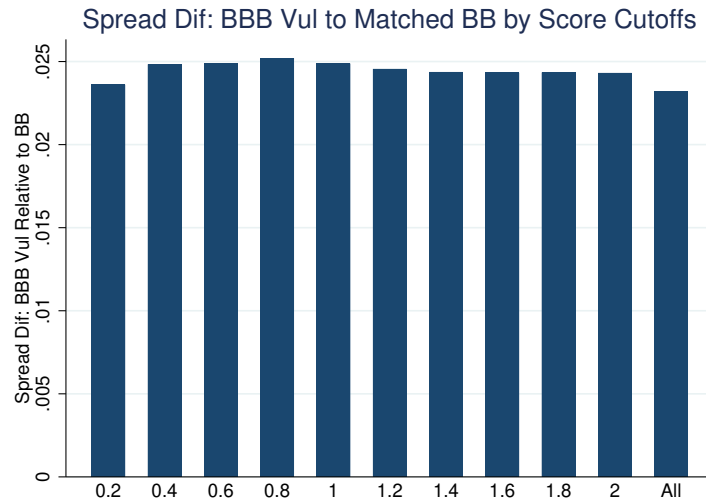


Figure B.13: Spread difference vulnerable BBB to matched BB across different score cutoffs. This figure shows the mean difference between the offering spread of bonds of BBB downgrade-vulnerable firms and the offering spread of bonds of matched BB firms within the same industry-year.

Appendix C Theoretical framework

In this appendix, we present a simple model to explain how the exorbitant privilege of prospective fallen angels can arise in equilibrium. This model adds a subsidy for debt financing to an environment similar to the one in [John and John \(1993\)](#).

Setup There are two dates, $t = 0$ and $t = 1$, and universal risk neutrality. A firm with debt F can invest in a safe investment and a risky investment. The safe investment pays off I with probability 1 at $t = 1$. The risky investment pays off H with probability q and L with probability $1 - q$, where $H > I > L$ and $q \sim U[0, 1]$. The debt provides a tax shield (the tax rate is τ) and there is limited liability. The timing works as follows: (i) The firm chooses F ; (ii) The probability q is realized; and (iii) The firm makes its investment decision.

Firm risk The firm invests in the risky project if and only if $q \geq \tilde{q}$. We refer to \tilde{q} as the risk of the firm (for illustrative purposes, we will refer to $1 - \tilde{q}$ as firm risks when presenting the results). Depending on the level of firm debt F , there are three cases:

1. A “low debt case” with $F \leq L$. Firms choose the first-best risk $\tilde{q} = \frac{I-L}{H-L}$. There is no agency cost of debt.
2. A “moderate debt case” with $F \in (L, I)$. Firms choose the second-best risk $\tilde{q} = \frac{I-F}{H-F}$, where $\frac{d\tilde{q}}{dF} = -\frac{H-I}{(H-F)^2} < 0$, namely firms take more risk (lower \tilde{q}) as their debt increases.
3. A “high debt case” with $F \geq I$. Firms choose the highest level of risk ($\tilde{q} = 0$) as they always take the risky project.

Fairly priced debt The firm chooses the level of debt F that maximizes firm value $V(F)$. The debt is fairly priced. There are three states of the world that depend on the realization of the probability q .

1. The firm chooses to undertake the riskless project. This state of the world has an unconditional probability of \tilde{q} .
2. The firm chooses to undertake the risky project and the risky project fails. This state of the world has an unconditional probability of $(1 - \tilde{q})^2$.
3. The firm might chooses to undertake the risky project and the risky project succeeds. This state of the world has an unconditional probability of $(1 - \tilde{q}^2)$.

Hence, firms solve:

$$\begin{aligned} \max_F V(F) \quad \text{where} \\ V(F) = & \frac{1}{2}(1 - \tilde{q}^2)((1 - \tau)H + \tau \min\{H, F\}) \\ & + \tilde{q}((1 - \tau)I + \tau \min\{I, F\}) \\ & + \frac{1}{2}(1 - \tilde{q})^2((1 - \tau)L + \tau \min\{L, F\}) \end{aligned}$$

Firms trade-off the tax benefit of debt with the agency cost of debt. Given the tax shield, firms never choose a debt $F < L$. Hence, firms can either have “moderate debt” or “high debt.” In most of our analysis, we focus on the former as the latter is always characterized by maximum risk-taking ($\tilde{q} = 0$).

Non-fairly priced debt We compare the economy presented above with an economy where debt is not fairly priced. More specifically, the value of debt now includes a subsidy α . Firms now solve:

$$\begin{aligned} \max_F \quad & \widehat{V}(F) \quad \text{where} \\ & \widehat{V}(F) = V(F) + \alpha F \end{aligned}$$

The subsidy induces firms to take on more debt and thus more risk (lower \tilde{q}). This subsidy can be rationalized by a high demand for debt.

Mapping the model to data The tax rate τ , the primitive driving the firm debt choice and thus its risk profile, is firm quality. We map intervals in τ to credit ratings. The cost of debt $S = F/D(F)$ is the bond yield. Firm risk $1 - \tilde{q}$ is the risk-taking behavior of firms, for example through risky M&A. The subsidy parameter α is the strength of the demand for bonds. We increase the demand for bonds within each rating bucket as τ increases, capturing the idea that investors demand more bonds of riskier firms within a rating bucket. This behavior can be explained by rating-based regulation or implicit and explicit limits that investment managers face in their asset allocation across ratings. To the extent that riskier issuers offer higher bond yields, the higher demand for bonds issuer by riskier firms might also capture the so-called “reach-for-yield” behavior.

Applications We now show two applications to interpret our empirical findings through the lenses of the framework just presented. [Figure C.1](#) shows firm risk choice and bond yields as a function of firm quality. The x-axes feature increasing tax rates τ , grouped in rating categories. We compare three cases: an economy with normal demand for IG bonds (blue solid line), an economy with moderate demand for IG bonds (red dashed line), and an economy with high demand for IG bonds (black dotted line). As discussed above, the subsidy increases as firm quality deteriorates within each rating bucket. Within each rating bucket, the subsidy induces higher risk-taking, and more so as we approach the BBB-rated market. The subsidy both flattens and introduces a convexity in bond yields.

[Figure C.2](#) shows average bond yields and firm risk-taking within each rating bucket for the three cases discussed above: normal demand for IG bonds, moderate demand for IG bonds, and high demand for IG bonds.

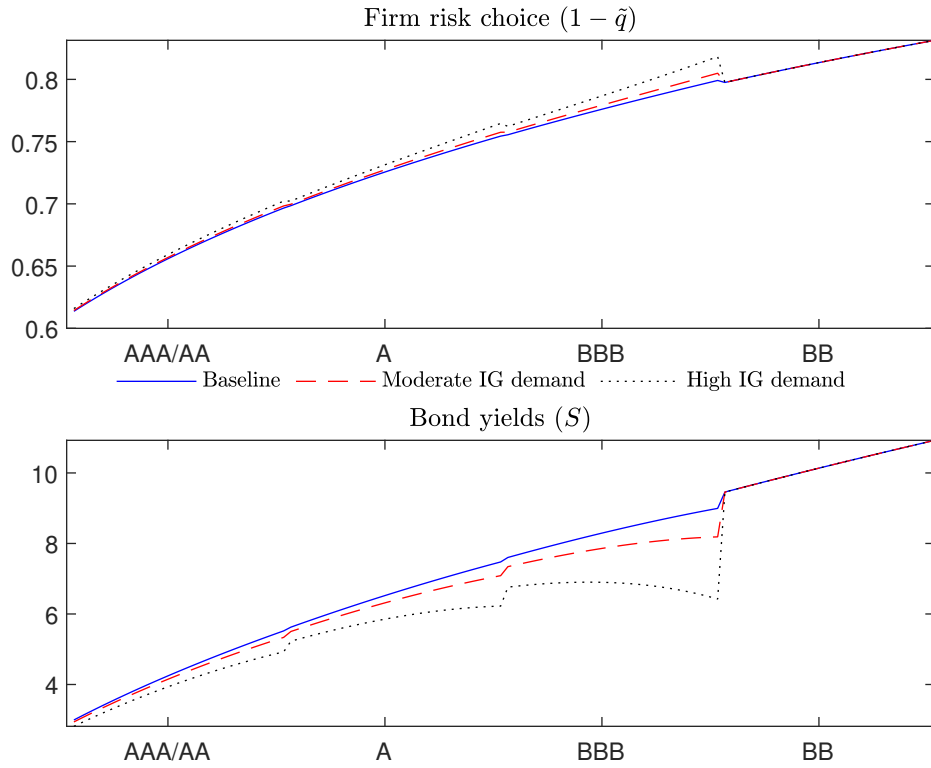


Figure C.1: Firm risk-taking and bond yields. This figure shows firm risk choice (top panel) and firm bond yields (bottom panel) as a function of firm quality. The x-axes show progressively higher tax rates, grouped in rating categories. The blue line corresponds to the baseline economy. The red dashed line corresponds to an economy with moderate demand for risk. The black dotted line corresponds to an economy with high demand for risk. Demand for risk is modeled through an increase in α within each rating group in the investment-grade market. The increase is more pronounced as we approach the BBB market from the AAA/AA market.

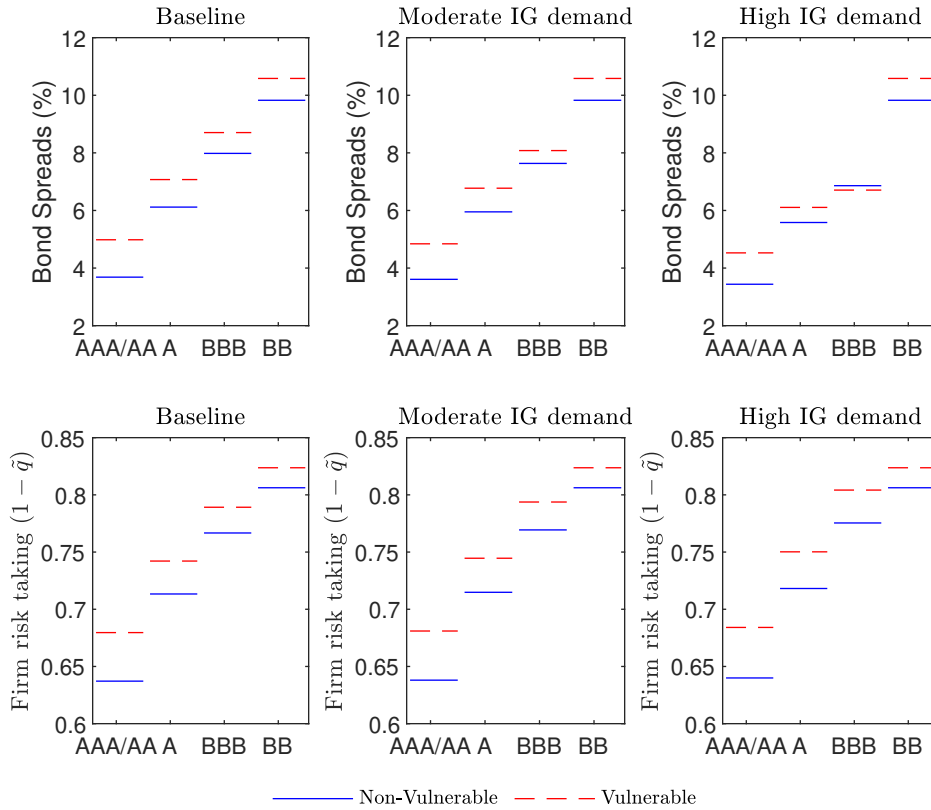


Figure C.2: Firm risk-taking and bond yields. This figure shows bond spreads (top panel) and firm risk choice (bottom panel) as a function of firm quality. The x-axes show progressively higher tax rates, grouped in rating categories. The blue lines show averages within a rating group for non-downgrade vulnerable issuers. The red lines show averages within a rating group for downgrade vulnerable issuers. The two left panels correspond to the baseline economy. The two middle panel correspond to an economy with moderate demand for risk. The two right panels correspond to an economy with high demand for risk. Demand for risk is modeled through an increase in α within each rating group in the investment-grade market. The increase is more pronounced as we approach the BBB market from the AAA/AA market.

Previous volumes in this series

1001 February 2022	Unequal expenditure switching: Evidence from Switzerland	Raphael Auer, Ariel Burstein, Sarah Lein and Jonathan Vogel
1000 February 2022	Dollar beta and stock returns	Valentina Bruno, Ilhyock Shim and Hyun Song Shin
999 February 2022	Shadow loans and regulatory arbitrage: evidence from China	Amanda Liu, Jing Liu and Ilhyock Shim
998 February 2022	Does IT help? Information technology in banking and entrepreneurship	Toni Ahnert, Sebastian Doerr, Nicola Pierri and Yannick Timmer
997 February 2022	Money markets, collateral and monetary policy	Fiorella De Fiore, Marie Hoerova and Harald Uhlig
996 January 2022	Monetary policy expectation errors	Maik Schmeling, Andreas Schrimpf and Sigurd A M Steffensen
995 January 2022	When uncertainty decouples expected and unexpected losses	Mikael Juselius and Nikola Tarashev
994 January 2022	Capital flows and institutions	Deniz Igan, Alexandre R Lauwers and Damien Puy
993 January 2022	Term premium dynamics and its determinants: the Mexican case	Ana Aguilar-Argaez, María Diego- Fernández, Rocio Elizondo and Jessica Roldán-Peña
992 January 2022	Bank opacity - patterns and implications	Stefan Avdjiev and Maximilian Jager
991 January 2022	Monetary policy and endogenous financial crises	Frederic Boissay, Fabrice Collard, Jordi Galí and Cristina Manea
990 January 2022	Informational switching costs, bank competition, and the cost of finance	José Renato Haas Ornelas, Marcos Soares da Silva and Bernardus F Nazar Van Doornik
989 January 2022	Central bank digital currencies (CBDCs) in Latin America and the Caribbean	Viviana Alfonso, Steven Kamin and Fabrizio Zampolli
988 January 2022	The premia on state-contingent sovereign debt instruments	Deniz Igan, Taehoon Kim and Antoine Levy

All volumes are available on our website www.bis.org.