

FEMA National Watch Center

Daily Operations Briefing

Saturday, May 21, 2022

8:30 a.m. ET



FEMA

National Current Ops / Monitoring

New Significant Incidents / Ongoing Ops

- Tornado – Michigan
- Wildfires
- Southwest Border Coordination Support – Washington, DC
- COVID-19

Hazard Monitoring

- Severe Thunderstorms – Southern Plains to Northeast
- Heavy Rain / Flash Flooding – Lower Mississippi to Ohio Valleys
- Heavy Snow possible – Colorado
- Elevated Fire Weather – Southwest

Disaster Declaration Activity

- Amendment No. 2 – FEMA-4652-DR-NM

Event Monitoring

- No significant events



FEMA

Tornado – Michigan

Current Situation: A tornado touched down yesterday during the late afternoon hours in Gaylord, Michigan, resulting in damage to multiple homes and businesses. Search and rescue efforts and further damage assessments continue in the impacted area. There have been no requests for FEMA assistance.

Impacts: (source: FEMA Region V Response Report, as of 11:30 p.m. ET)

Safety and Security:

- Damage to homes and businesses; 5-10 homes with major damage
- Rescue efforts ongoing with Fire, EMS, and Police of residences and businesses
- MI TF-1 activated (State Type-3 Team) and enroute

Food, Water, Shelters:

- 1 shelter open / unknown occupants

Health and Medical:

- 1 fatality / 44 injuries

Energy: (DOE Eagle-I as of 7:00 a.m. ET)

- 6,250 (35.92%) customers without in Otsego County
- Several gas leaks reported

Communications:

- Several cell phone towers affected; Verizon & AT&T First Net enroute

Transportation:

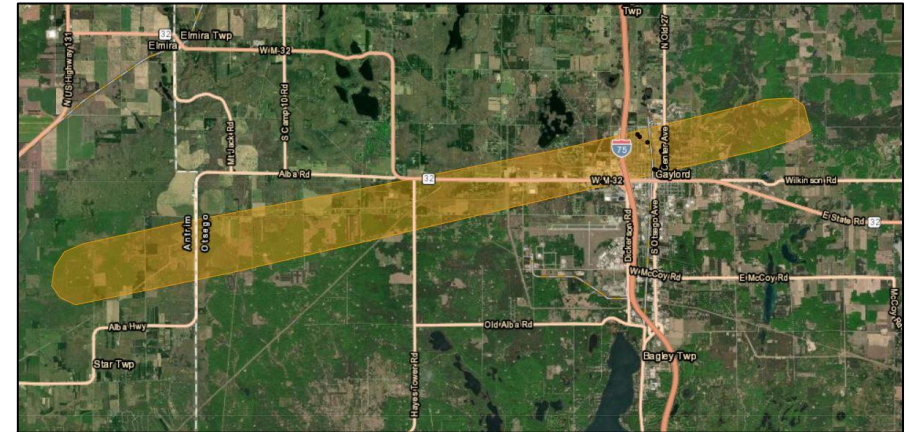
- Multiple roads closed due to debris; MDOT on scene and assessing

Local/State Response:

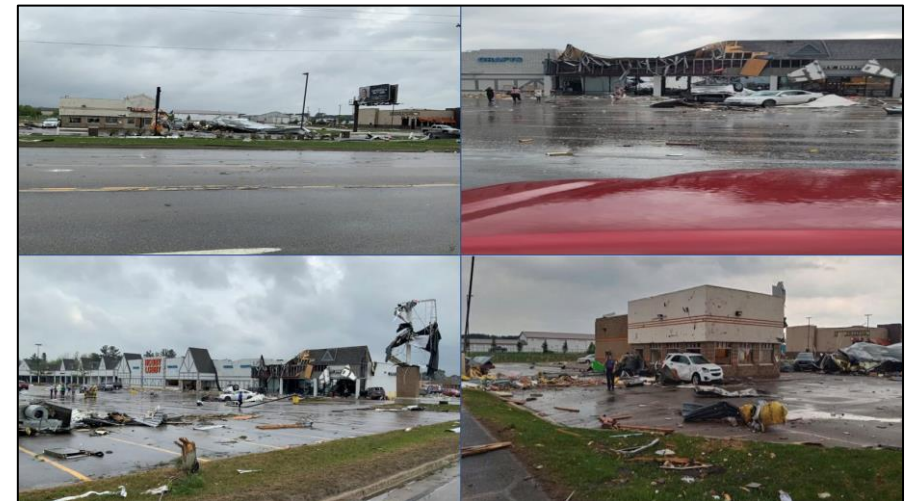
- MI EOC is at Partial Activation; Governor declared a statewide Emergency Declaration

Federal Response:

- FEMA Region V leadership held consequence management call with MI EOC
- FEMA Region V LNO onsite at MI EOC
- FEMA Region V RWC and the NWC continues to monitor
- No requests for FEMA assistance



Preliminary Tornado Track (source: National Weather Service)



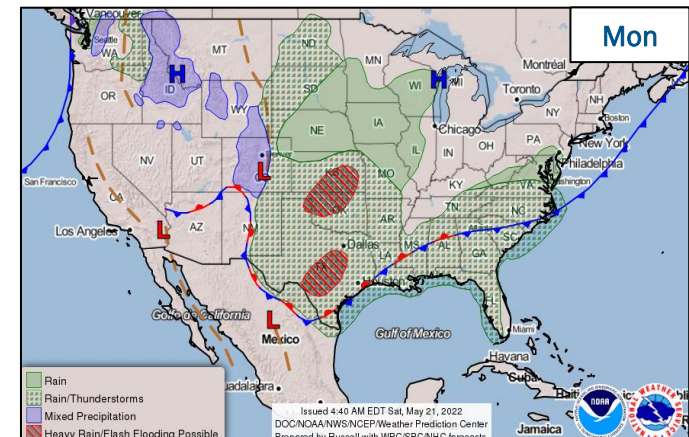
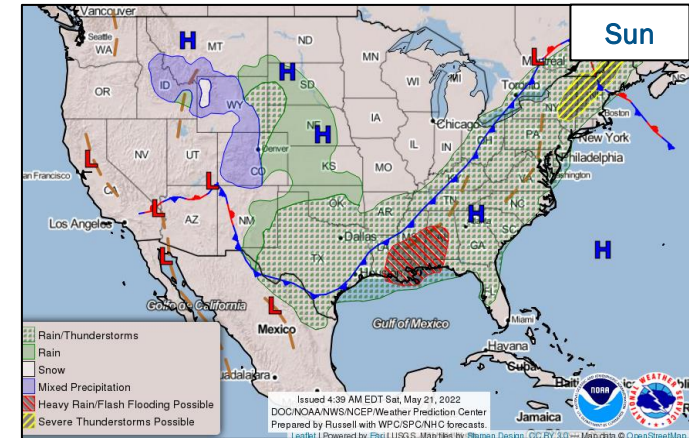
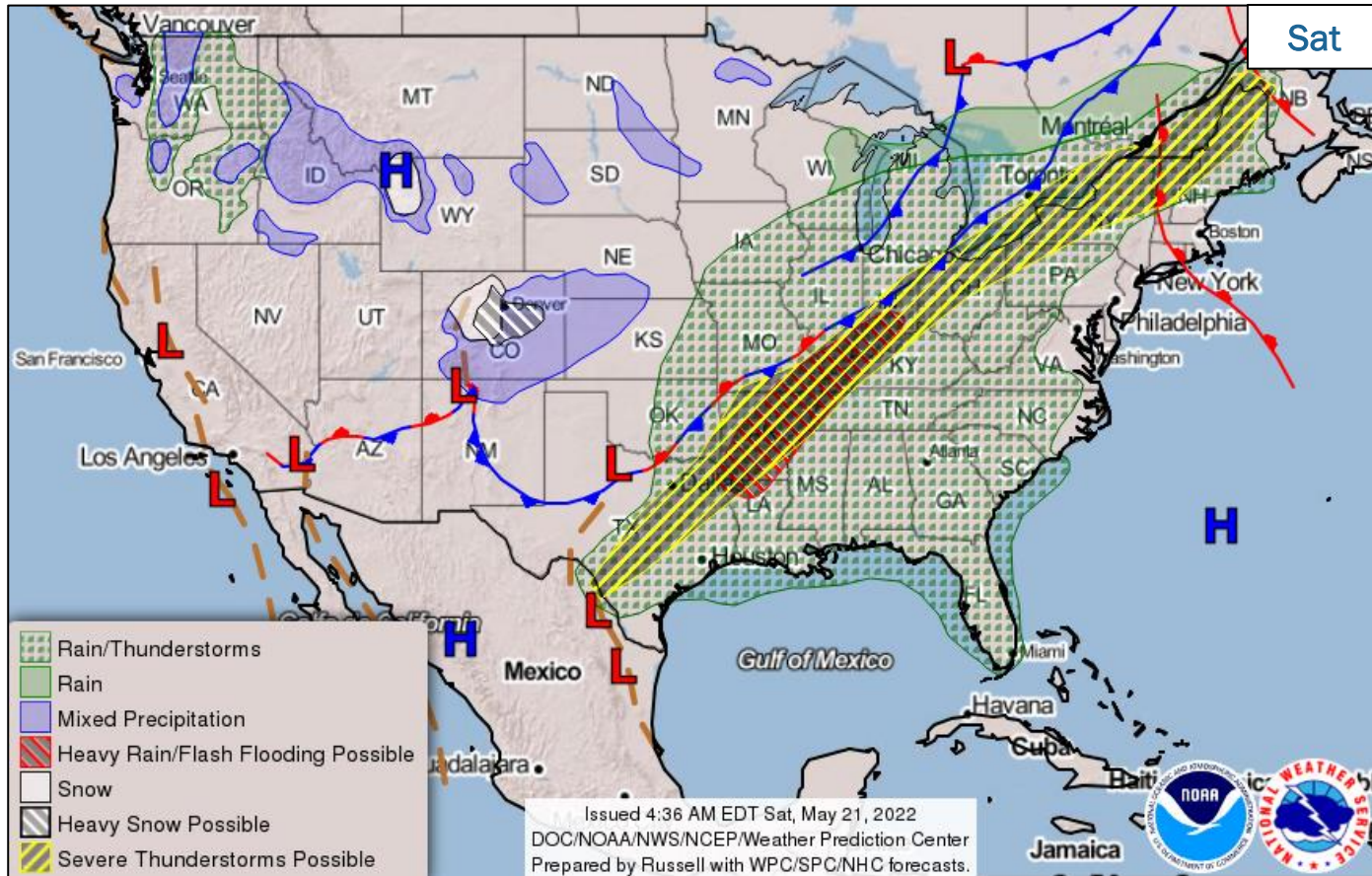
(source: FEMA Region V Response Report)



FEMA

National Watch Center

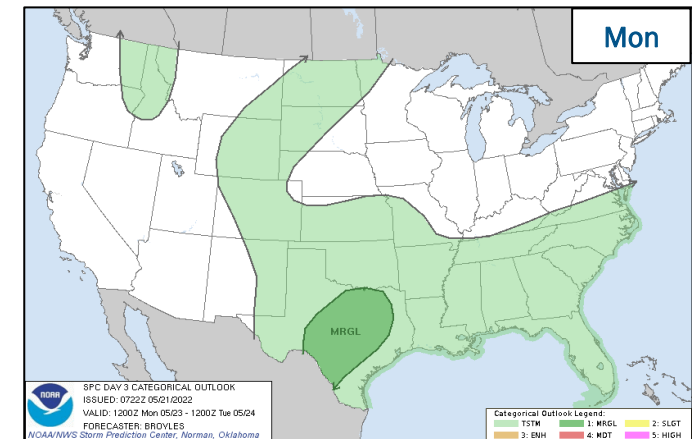
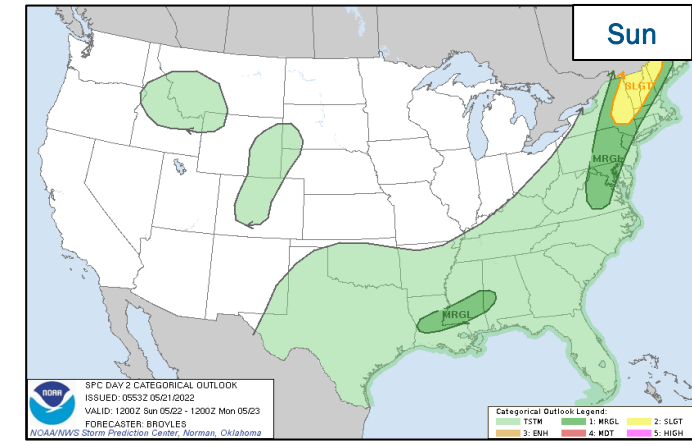
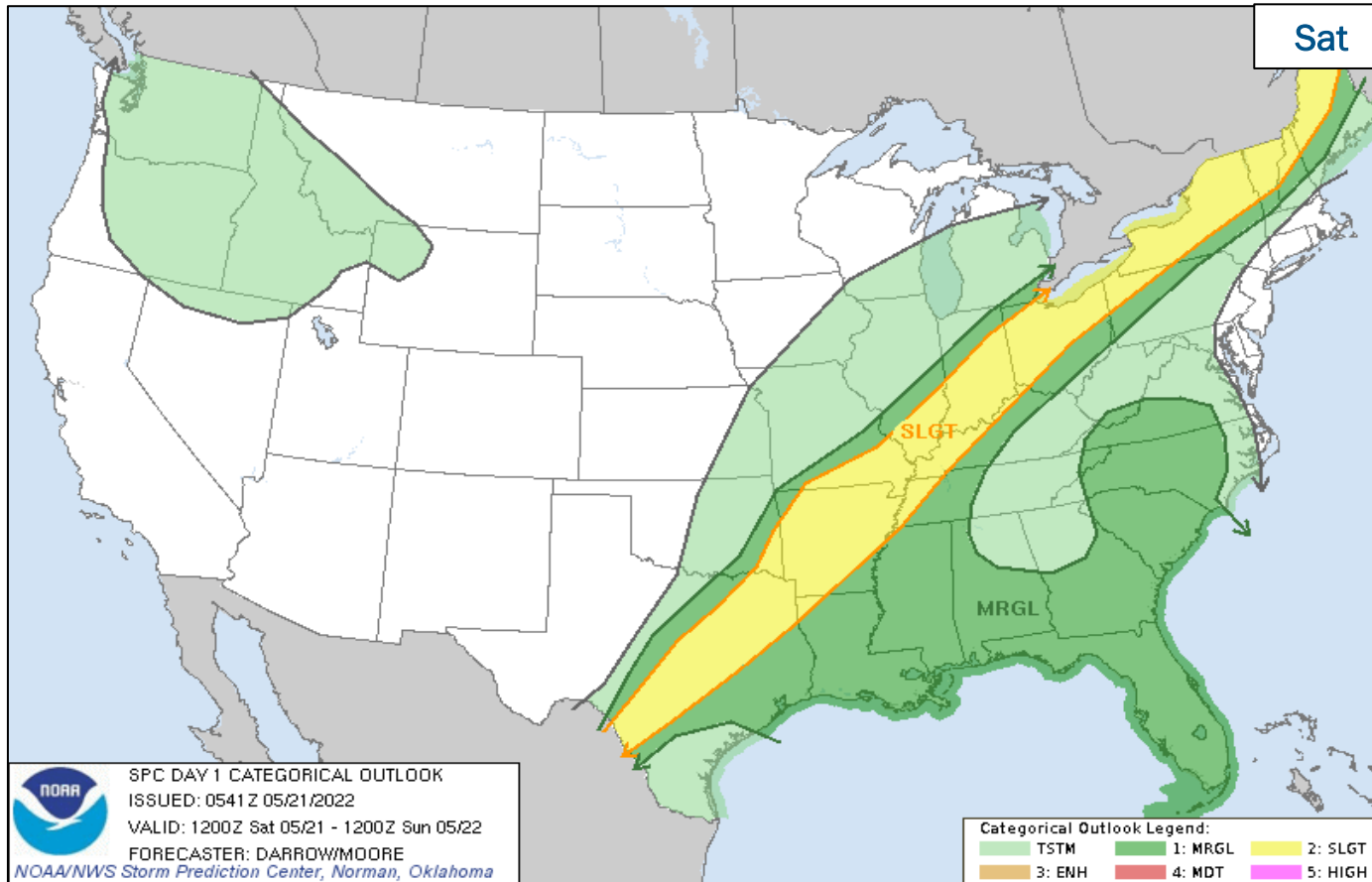
National Weather Forecast



FEMA

National Watch Center

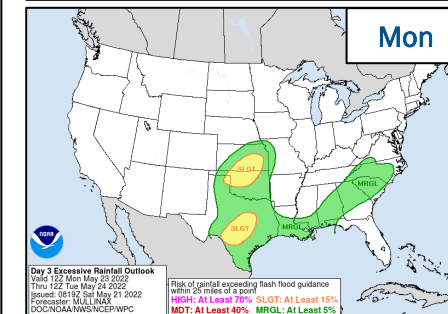
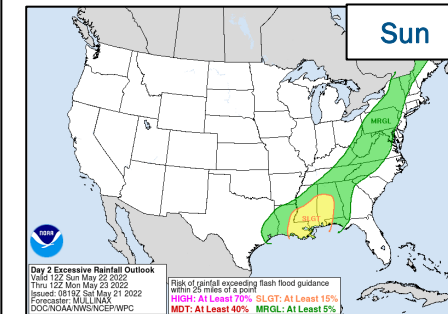
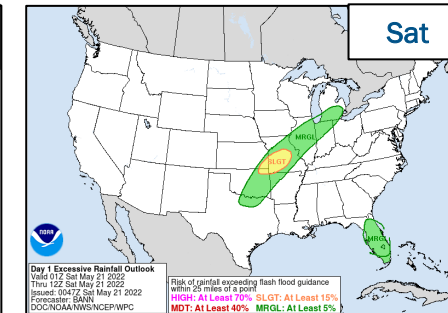
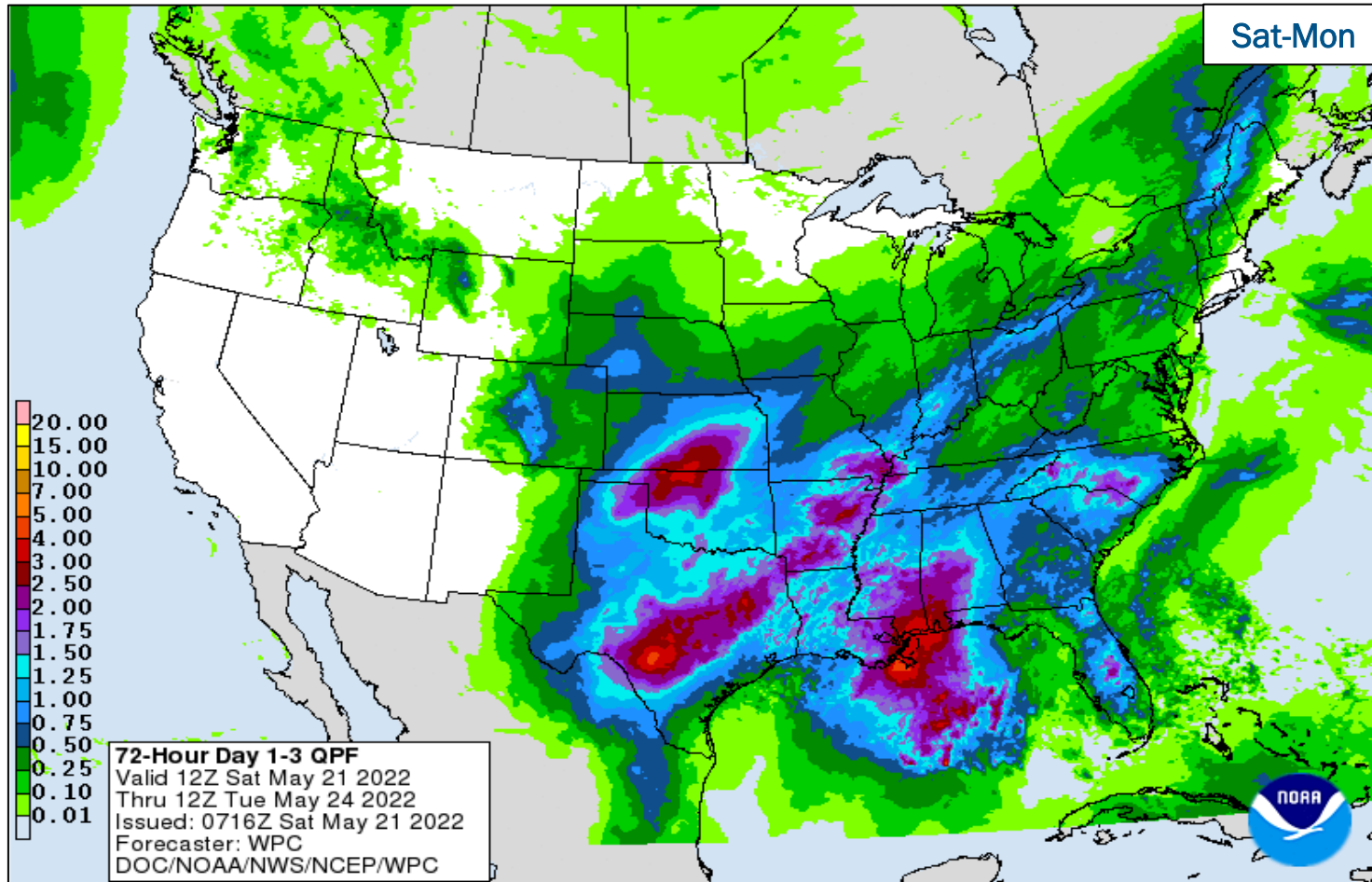
Severe Weather Outlook



FEMA

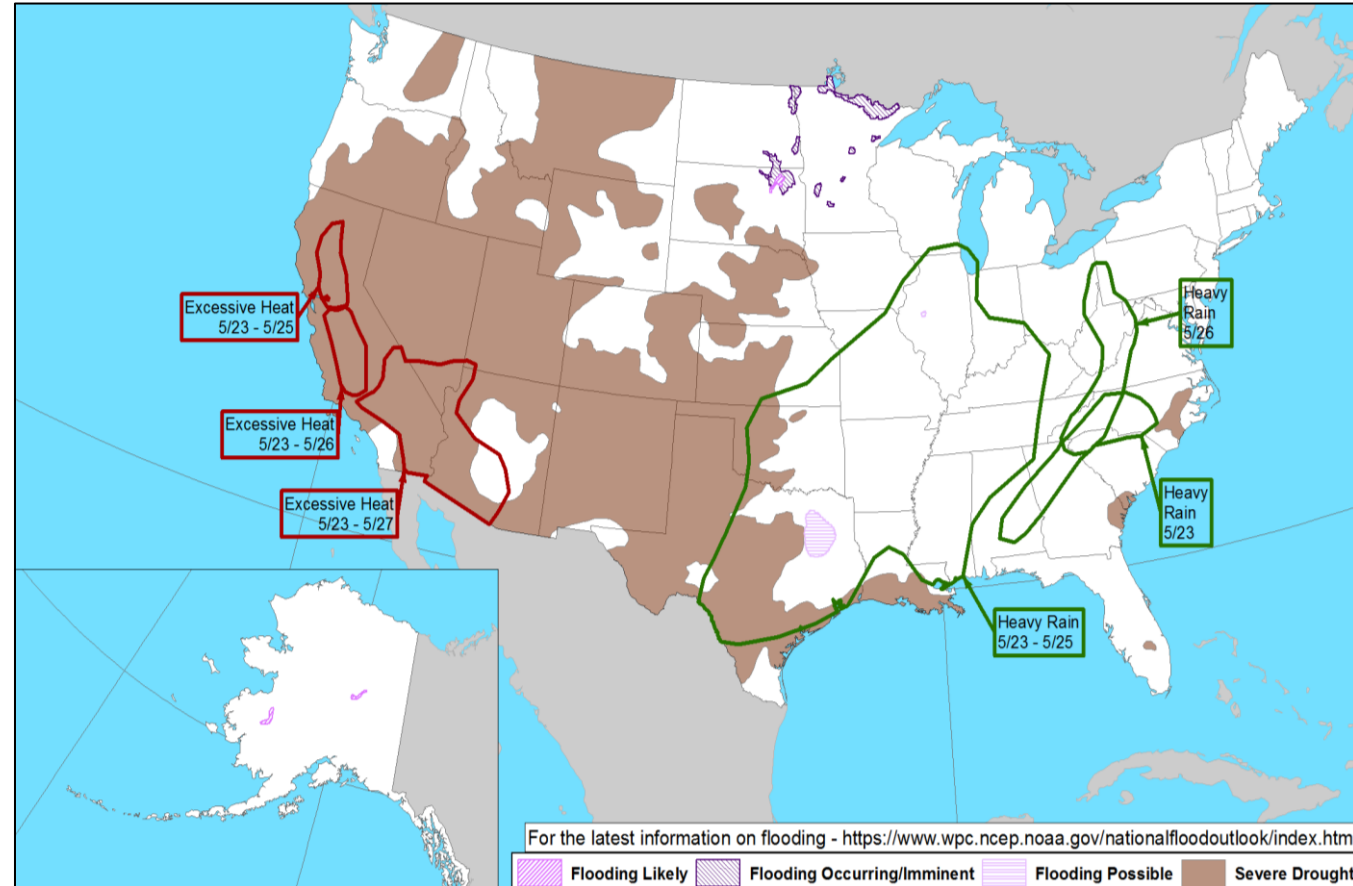
National Watch Center

Precipitation & Excessive Rainfall



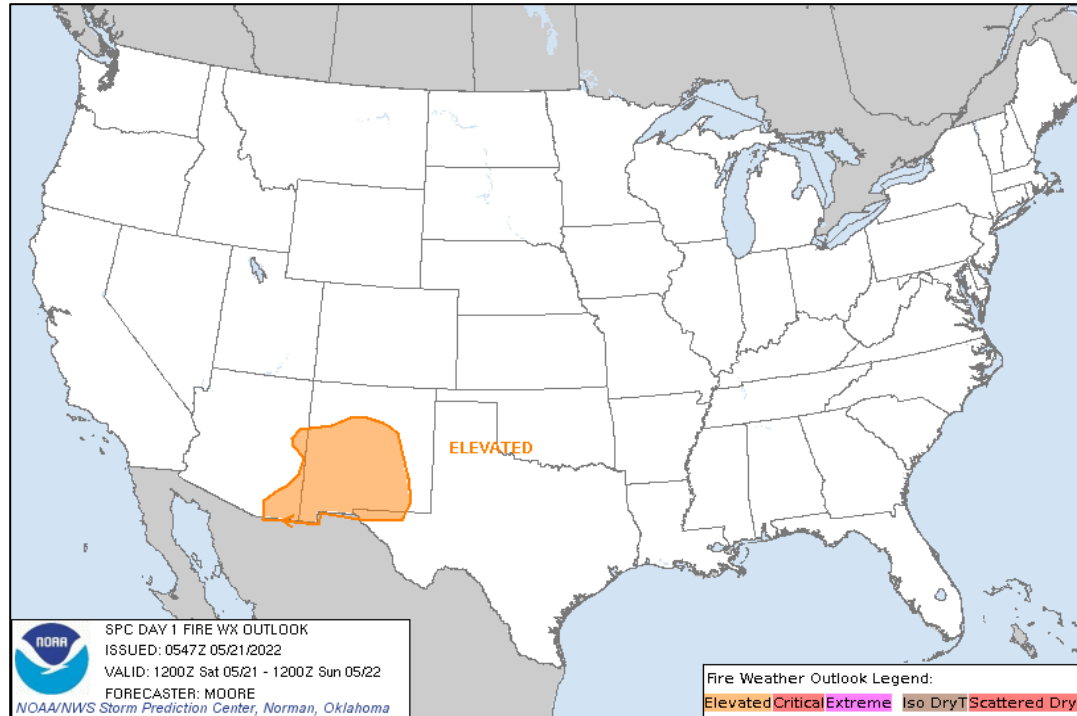
FEMA

Hazards Outlook – May 23-27

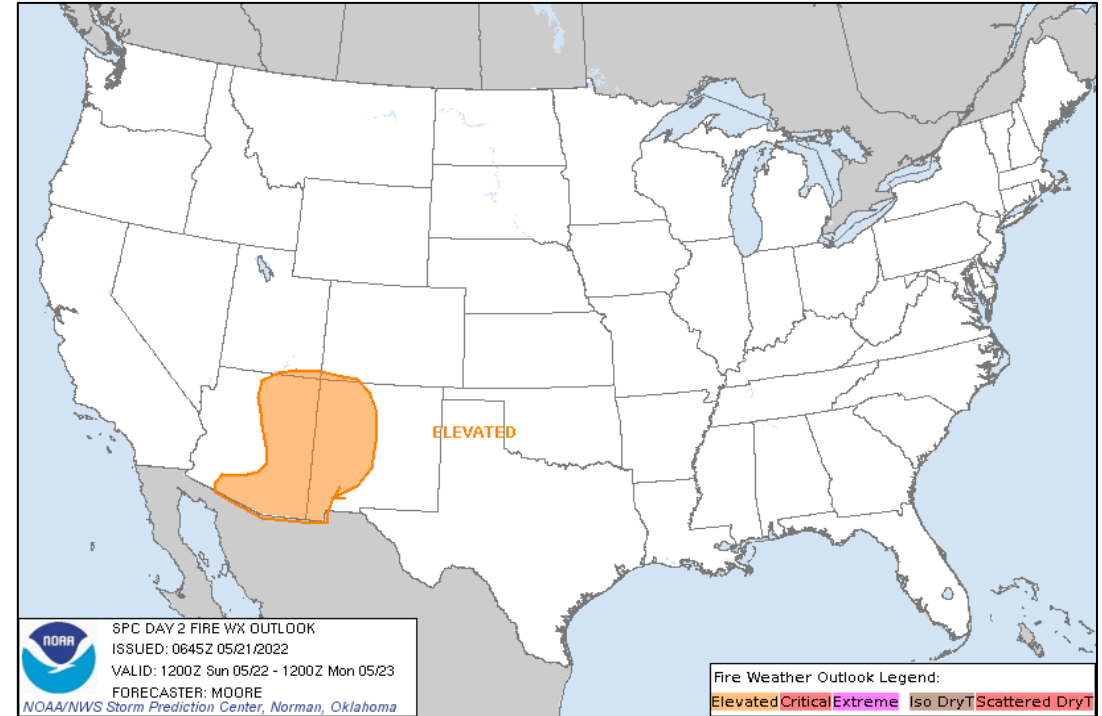


FEMA

Fire Weather Outlook



Today



Tomorrow



FEMA

National Watch Center

Wildfire Summary

Fire Name (Co., ST)	FMAG #	Acres Burned	Percent Contained	Evacuations	Structures (Homes / Other)			Fatalities / Injuries
					Threatened	Damaged	Destroyed	
Hermit's Peak (San Miguel, NM)	5438-FM-NM	306,472 (+3,131)	40%	M: 27,233 (+605)	H: 16,316	H: 13	H: 350 (+3)	0 / 44 (+1)
				V: 0	O: 0	O: 29 (+2)	O: 288 (+1)	
Cerro Pelado (Sandoval, NM)	Not requested	45,605	75%	M: 753	H: 34	H: 0	H: 4	0 / 1
				V: 0	O: 0	O: 0	O: 6	
Mesquite Heat (Taylor, TX)	5440-FM-TX	9,613	25%	M: 200 (+100)	H: 50	H: 0	H: 27	0 / 0
				V: 0	O: 0	O: 0	O: 0	

(Evacuations: M = Mandatory / V = Voluntary; Structures: H = Homes and Mixed Commercial/Residential / O = Non-residential Commercial/Other Minor Structures)



FEMA

Joint Preliminary Damage Assessments

Region	State / Location	Incident	IA	Number of Counties		Start - End
			PA	Requested	Complete	
V	MN	Severe Weather and Flooding April 22 and continuing	IA	0	0	N/A
			PA	49	0	5/23 - TBD
	5 Tribes*		IA	0	0	N/A
			PA	5	0	5/23 - TBD
VI	MCN**	Severe Storm and Flooding May 2-5	IA	1	0	5/6 - TBD
			PA	1	0	5/16 - TBD
	OK	Severe Storm, Tornadoes, and Flooding May 2-5	IA	2	0	5/2 - TBD
			PA	20	0	5/2 - TBD

*Boise Forte Band of Chippewa, Leech Lake Band of Ojibwe, Red Lake Nation, White Earth Nation, & Grand Portage Band of Lake Superior Chippewa

**Muscogee (Creek) Nation



FEMA

National Watch Center

Declaration Requests in Process – 3

State / Tribe / Territory – Incident Description	Type	IA	PA	HM	Requested
MS – Severe Storm, Straight-line Winds, and Tornadoes	DR	X		X	Apr 28
MS – Severe Storm, Straight-line Winds, and Tornadoes	DR	X		X	Apr 29
KS – Winter Storms and Straight-line Winds	DR		X	X	May 3



FEMA

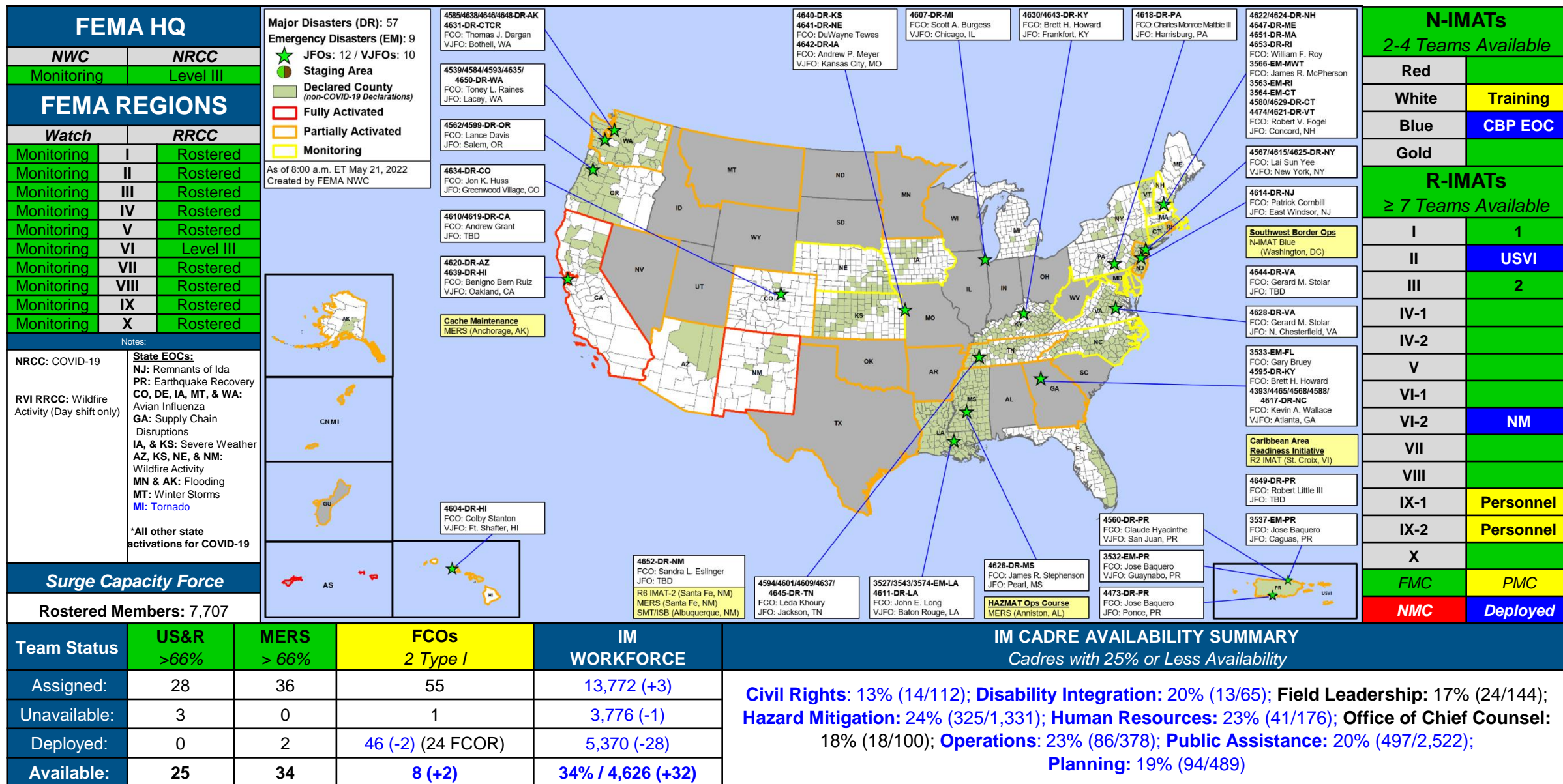
Declaration Amendments

Declaration	Number	Issued	Action
FEMA-4652-DR-NM	2	May 20	Adds 4 counties for Public Assistance



FEMA

FEMA Common Operating Picture





FEMA

Helping people before, during, and after disasters.



Scan to subscribe to this briefing.