



FACT SHEET

A NEW ROADWAY PROJECT WILL BEGIN IN YOUR AREA

State Road (SR) 5/US 1/Overseas Highway

FIN #s.: 443307-1-52-01 (Lead), 443202-1-52-01, 443210-1-52-01, 443208-1-52-01, 442980-1-52-01, 443182-2-52-01, 443112-1-52-01, 442921-1-52-01, 443233-1-52-01

Begins: August 2020

OVERVIEW

The Florida Department of Transportation (FDOT) is scheduled to begin a Hurricane Irma repair project the week of August 17, 2020, at various locations along SR 5/US 1/Overseas Highway, from Mile Marker (MM) 33.644 to MM 79.732, in Monroe County.

WORK TO BE PERFORMED

Repairing embankment washout and existing shoulder pavements in selected areas and shared use paths.

PROJECT SCHEDULE

August 2020 — September 2021

AFFECTED MUNICIPALITY

Unincorporated Monroe County
Village of Islamorada
City of Layton
City of Marathon

ESTIMATED CONSTRUCTION COST

\$6.01 million

LANE AND SHOULDER CLOSURE INFORMATION

Lane closures shall occur only during non-peak hours on non-event days/nights/weekends. Non-peak hours are:

- 8 a.m. to 6 p.m., Monday through Friday

ALWAYS PUT SAFETY FIRST

For your safety and the safety of others, please use caution when driving, walking or biking through any construction zone. Wearing a safety belt is the single most effective way to protect people and reduce fatalities in motor vehicle crashes. The Department takes steps to reduce construction effects, however you might experience the following around the work site:

- Travel lane closures
- Increased dust and noise
- Workers and equipment moving around the area
- Allow extra time to reach your destination
- Obey all posted signs and speed limits

Please note that this schedule could change due to weather or other unexpected conditions.

FOR MORE INFORMATION

For more information please contact CCEI Senior Project Engineer Hector Rodriguez, M.S., P.E., at (305) 450-9555, or Community Outreach Specialist Paulette Summers at (786) 510-3921 or via e-mail at psummers@mrgmiami.com.



Please visit our website:
www.fdotmonroe.com
For real-time traffic information dial 511 or visit:
www.fl511.com



1000 NW 111 AVENUE MIAMI, FL 33172



FACT SHEET

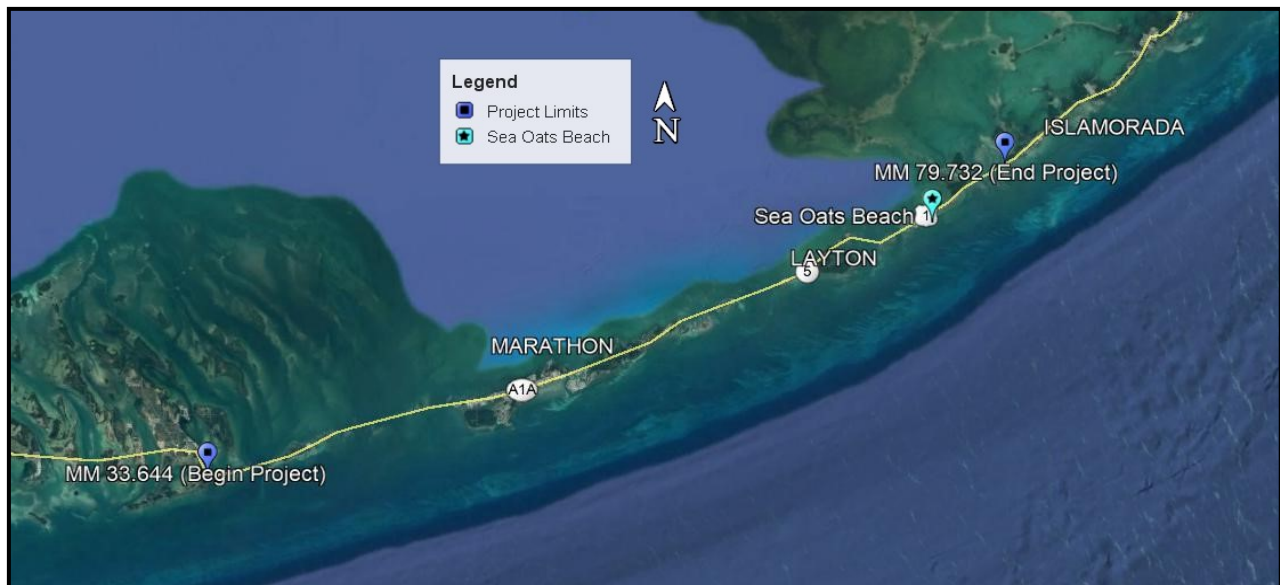
A NEW ROADWAY PROJECT WILL BEGIN IN YOUR AREA

State Road (SR) 5/US 1/Overseas Highway

FIN #s.: 443307-1-52-01 (Lead), 443202-1-52-01, 443210-1-52-01, 443208-1-52-01, 442980-1-52-01, 443182-2-52-01, 443112-1-52-01, 442921-1-52-01, 443233-1-52-01
Begins: August 2020

PROJECT LIMITS:

SR 5/US 1/Overseas Highway from MM 33.644 to MM 79.732



Project Number	Begin MM	End MM
443202-1-52-01	79.316	79.732
443210-1-52-01	78.331	79.145
443208-1-52-01	77.715	77.877
442980-1-52-01	74.501	74.561
443182-2-52-01	74.489	74.571
443307-1-52-01 (Lead)	74.336	75.116
443112-1-52-01	61.073	61.387
442921-1-52-01	33.639	33.886
443233-1-52-01	33.644	33.944



Follow us on Twitter @MyFDOT_Miami



Please visit our website:
www.fdotmonroe.com
For real-time traffic information dial 511
or visit: www.fl511.com



1000 NW 111 AVENUE MIAMI, FL 33172